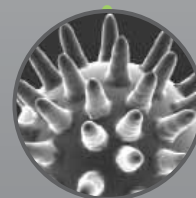
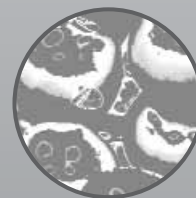


# REACH-IN CO<sub>2</sub> INCUBATOR



CARON

## LARGE CAPACITY CO<sub>2</sub> INCUBATOR

CARON's large capacity Reach-In CO<sub>2</sub> Incubator provides the ideal environment for small to large scale, high volume cell culture.

This 30 cu. ft. unit provides precise control of temperature, relative humidity and CO<sub>2</sub>, and offers the latest technology in sensors, including infrared (IR) CO<sub>2</sub>. Our control and uniformity parameters rival any conventional benchtop incubator, providing maximum culturing space in a minimal footprint.

CARON controls humidity by monitoring and injecting water, eliminating the infamous humidity pans found in other units which result in contamination and corrosion caused by standing water.

## STANDARD FEATURES

- Temperature range of 5°C above ambient to 60°C is controlled with a drift-resistant RTD sensor.
- Humidity is controlled from ambient to 95% RH utilizing a capacitive sensor. No humidity pan is needed. Water is injected on an as-needed basis to maintain a precisely controlled environment.
- Humidity levels can be controlled at any temperature setpoint without recalibration.
- The CO<sub>2</sub> range of 0 to 20% is controlled through the use of an IR (infrared) sensor. IR CO<sub>2</sub> sensors are much more stable and drift resistant than conventional T/C (thermal conductivity) sensors used by other manufacturers.
- The IR CO<sub>2</sub> sensor is not affected by temperature or humidity changes, allowing the chamber to recover CO<sub>2</sub> levels without waiting on temperature and humidity. Systems with IR sensors typically recover CO<sub>2</sub> as much as 10 times faster than those with T/C sensors.
- CARON's carefully designed horizontal airflow system generates evenly distributed airflow across all shelf locations. Maximum uniformity and rapid recovery are maintained even under heavy cabinet loads.
- Sliding stainless steel shelves are easily adjustable to facilitate handling of your product, and allow easy access to samples at the rear of the chamber.
- Stainless steel interior is easily cleaned and highly resistant to corrosion.

## STANDARD FEATURES CONTINUED

- The ergonomically designed door handle allows easy access into the chamber.
- Heated, triple-pane glass door minimizes condensation on the door for a clear view of your valuable samples, and aids in rapid temperature recovery.
- Lockable control panel minimizes the possibility of unauthorized access.
- Two access ports, one on each side of the chamber, make validation easy and provide you easy access to connect instrumentation.

## SET IT AND FORGET IT!

CARON's Reach-In CO<sub>2</sub> Incubators can be factory pre-programmed with setpoints for temperature, humidity, and CO<sub>2</sub>. After final connections are made at your facility, power can be turned on with nothing more to do. Just set it and forget it!

## STANDARD ACCESSORIES

CARON's Reach-In CO<sub>2</sub> Incubator is easily configured by selecting from a variety of accessories.

Our environmentally-friendly Condensate Recirculating System conditions readily available tap water, recycles it, and eliminates the need for a floor drain. Our ergonomically designed Inner Door Kit and other optional accessories allow you to purchase options that are pertinent to your particular application, while minimizing the cost.

CARON offers a variety of optional validation services from IQ/OQ protocols to full on-site IQ/OQ/PQ validation. Please contact our Customer Service Department for complete details.



# SPECIFICATIONS

MODEL	6034-1
Temperature Range	5°C above ambient to 60°C
Temperature Control	± 0.1°C
Temperature Uniformity	± 0.3°C at 37°C
Temperature Sensor	RTD
Humidity Range	Ambient to 95% RH
Humidity Control	± 2.0%
Humidity Sensor	Capacitive
CO <sub>2</sub> Range	0 to 20%
CO <sub>2</sub> Control	± 0.1%
CO <sub>2</sub> Sensor	Infrared
Interior Dimensions	30.0" W x 27.5" D x 63.5" H (76.2cm W x 69.9cm D x 161.3cm H)
Interior Construction	Type 304, 2B Finish, Solid Stainless Steel
Exterior Dimensions	35.5" W x 33.5" D x 90.3" H (90.2cm W x 85.1cm D x 229.4cm H)
Exterior Construction	Cold Rolled Steel, Powder Coated
Work Space	30 cu. ft. (850 liters)
# of Shelves	5 Standard; 30 Maximum Capacity
Shelf Construction	304 Stainless Steel, Wire Rod, Sliding
Shelf Dimensions	29.3" W x 26.5" D (74.4cm W x 67.3cm D)
Electrical	115V, 60 Hz, 20 Amp (NEMA 5-20P Plug)
Shipping Weight	700 lbs.

Specifications are subject to change without notice.

# OPTIONAL ACCESSORIES

## STOCK NO. DESCRIPTION

CRSY102	Universal Condensate Recirculating System. In-line DI cartridge, carbon block filter, anti-bacterial stick, 7 gallon water tank, low water alarm, and recirculation pump.	OUTP102	4-20mA Analog Outputs. Provides connections for monitoring displayed temp, RH and CO <sub>2</sub> values.
GASG101	CO <sub>2</sub> Gas Guard. Allows two CO <sub>2</sub> tanks to be connected to a Model 6034. Automatically switches from the primary to the secondary tank when low gas pressure is detected.	LOCK101	Outer Door Lock.
REGL101	CO <sub>2</sub> Tank Regulator. Two stage with input range of 0-2000 PSI and output range of 0-30 PSI. Dual pressure gauges with barbed hose connection. Equipped with a rotary shutoff valve.	DOOR601	Lexan Inner Door Kit. Divides the chamber into five equally sized zones. Minimizes chamber interruption during a door opening.
SHLF123	Extra Perforated Stainless Steel Shelf Kit. Includes one stainless steel perforated shelf, two shelf rails, and four shelf clips.	DOOR505	Solid Light Tight Door Cover.
ALRM203	Alarm Contacts (Temp, RH, CO <sub>2</sub> ). Provides NO and NC dry contacts for temperature, humidity and CO <sub>2</sub> alarms.	RCDR107	Temperature Recorder. Single pen, 7 day, 10 inch circular chart.
COMM101	RS485 Communications. Provides communications interface to temp, RH and CO <sub>2</sub> controllers. Requires 3rd party or custom software to enable communications.	RCDR103	Temperature/Humidity Recorder. Dual pen, 7 day, 10 inch circular chart.
OUTP101	0-5V Analog Outputs. Provides connections for monitoring displayed temp, RH and CO <sub>2</sub> values.	RCDR110	Built-in Temperature Recorder. Single pen, 7 day, 6 inch circular chart.
		RCDR111	Built-in Temperature/Humidity Recorder. Dual pen, 7 day, 6 inch circular chart.
		SFTW102	Windows-based Watlow Communications Software for Data Logging.

5M, 8/06



PO Box 715 • Marietta, OH 45750  
 Phone: 800-648-3042 • 740-373-6809  
 Fax: 740-374-3760  
[www.caronproducts.com](http://www.caronproducts.com)  
[sales@caronproducts.com](mailto:sales@caronproducts.com)