

Sartorius Pipette Calibration Totally Accurate, Efficient and Independent



GPC65-CW



GPC26-CW/GPC225-CW



YDB01WZA

Save time and money

Pipettes are gauges used as inspection, measuring and test equipment. GLP guidelines and ISO standards require pipettes to be tested at defined intervals to ensure their continued proper functioning. Quick testing must also be performed between these intervals. Having pipette calibration performed externally can be expensive and time-consuming. Backup pipettes must also be available to maintain routine operations. The equipment for performing the oft-required quick tests is not even available in many cases.

Now you can calibrate your pipettes yourself quickly and inexpensively with the GPC Pipette Calibration Balance or YCP03-1 Pipette Calibration Kit from Sartorius.

Procedure

The liquid taken up in the pipette is weighed on a balance. The volume of the liquid is calculated from its weight and density and compared with the nominal volume for the pipette. The balance transmits the weight value to the PC where all the required calculations are performed – for example, by the Picaso software. At the end of each measurement, the calibration results are printed as a GLP-compliant report. The installation of an evaporation trap maintains the humidity at 60–90 %, thus preventing loss of liquid from the pipetting vessel.

GPC Pipette Calibration Balances

Fast and user-friendly

The balances in the GPC series are ideally suited for gravimetric testing of the volume of any pipette size. Because these balances do not require an additional draft shield, opening and closing of the draft shield doors is eliminated. This saves considerable time. The calibration workstation's modular design can be optimally adapted to your lab staff's ergonomic needs.

“On the go” pipette calibration

With the optional YDB01WZA carrying case, you can pack up your GPC pipette calibration balance along with the other accessories.

Ambient conditions permitting, you have everything you need to calibrate your pipettes directly at the place of use.

Equipment supplied

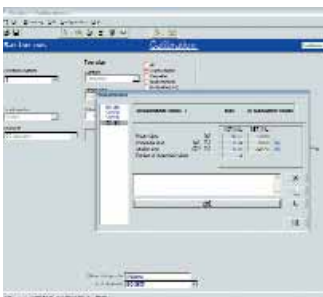
- Weighing cell with separate electronics box
- Display/service unit with 1 m cable (GPC65-CW: 0.3 m cable)
- Motorized calibration and adjustment function with built-in calibration weight
- Bidirectional RS232 data interface port
- Leveling feet and level indicator
- AC adapter
- Pipette calibration kit consisting of:
 - Evaporation trap
 - Pipetting vessels 6 ml and 21 ml (3 of each)
 - Special adapter and reduction fittings for pipetting vessels
- Cable for connecting the balance (RS232) to a PC (USB)

Overview of GPC models

Model capacity	Readability	Weighing capacity	Pipetting weighing
GPC26-CW	0.001 mg	20 g	0.001 mg – 8 g
GPC65-CW	0.01 mg	60 g	0.01 mg – 35 g
GPC225-CW	0.01 mg	220 g	0.01 mg – 195 g

Optional accessories

	Order number
PICASO pipette calibration software (PC running Windows operating system 98/2000/NT or XP required)	YCP03-2
Draft shield and 50 ml stainless-steel vessel (for GPC65-CW and GPC225-CW only)	YDS01WZA
Carrying case for mobile use	YDB01WZA



PICASO pipette calibration software



ME235P-SD



ME5 with VF988

Pipette calibration kit YCP03-1

Optimize your pipette calibration

With the YCP03-1 Pipette Calibration Kit, you can save time, money, and organizational effort. Of course, you need to choose the best balance for your needs to benefit from all these advantages.

If you need a balance for other uses as well ...

... the Sartorius microbalances and semimicrobalances are the right solution for you. You can turn your balance into a pipette calibration workstation – and then back into an ordinary balance again – quickly and easily.

Equipment supplied

- Picaso program CD
- Evaporation trap
- Weighing system adapter
- Vessel adapter for 21 ml vessels
- Reduction fitting for 6 ml pipetting vessel
- Pipetting vessels 6 ml and 21ml (3 of each)
- Connection cable for balance – computer
- Centering disk for the evaporation trap
- Carrying case

Overview of balance models

Model*	Readability (mg)	Weighing capacity (g)
ME36S (VF3677 required)	0.001	31 (16 g**)
ME5 (VF988 required)	0.001	5
CPA26P (VF3604 required)	0.002 0.01	5 21
ME235S	0.01	230
CPA225D (VF2396 required)	0.01 0.1	100 220
ME235P	0.01 0.02 0.05	60 110 230
ME235P-SD (with short-design draft shield)	0.01 0.02 0.05	60 110 230

Accessories

	Order number
Pipette calibration kit incl. PICASO pipette calibration software (for all of the above-named balance models, except ME5)	YCP03-1
Short-design draft shield and adaptation of YCP03-1 for CPA225D	VF2396
Adaptation of YCP03-1 for ME36S	VF3677
Adaptation of YCP03-1 for CPA26P	VF3604

Special pipette calibration kit for ME5 consisting of:

Draft shield, evaporation trap, vessel adapter and pipetting vessel (2.5 ml) VF988

* Models ME235S, ME235P, CPA225D, ME5 and ME36S are also available in versions calibrated for legal metrology.

** Weighing capacity with pipette calibration kit installed: 16 g

Picaso system requirements

Picaso requires a PC running Windows® 95|98|NT|2000|XP with an RS232C interface port for the interface cable, 64 MB RAM and at least 20 MB available hard disk space.

Overview of Picaso software performance features

- Measurement data saved at a click of the mouse
- Program includes preserved specifications of more than 450 pipette types
- Measurements in accordance with British Standard, ASTM and EN ISO 8655
- Individual pipettes inventoried
- Data records are GLP-compliant and include mean, (in)accuracy, (im)precision, and standard deviation
- Statistics displayed in graphs
- Time-controlled functions for monitoring calibration cycles
- Online help for all functions