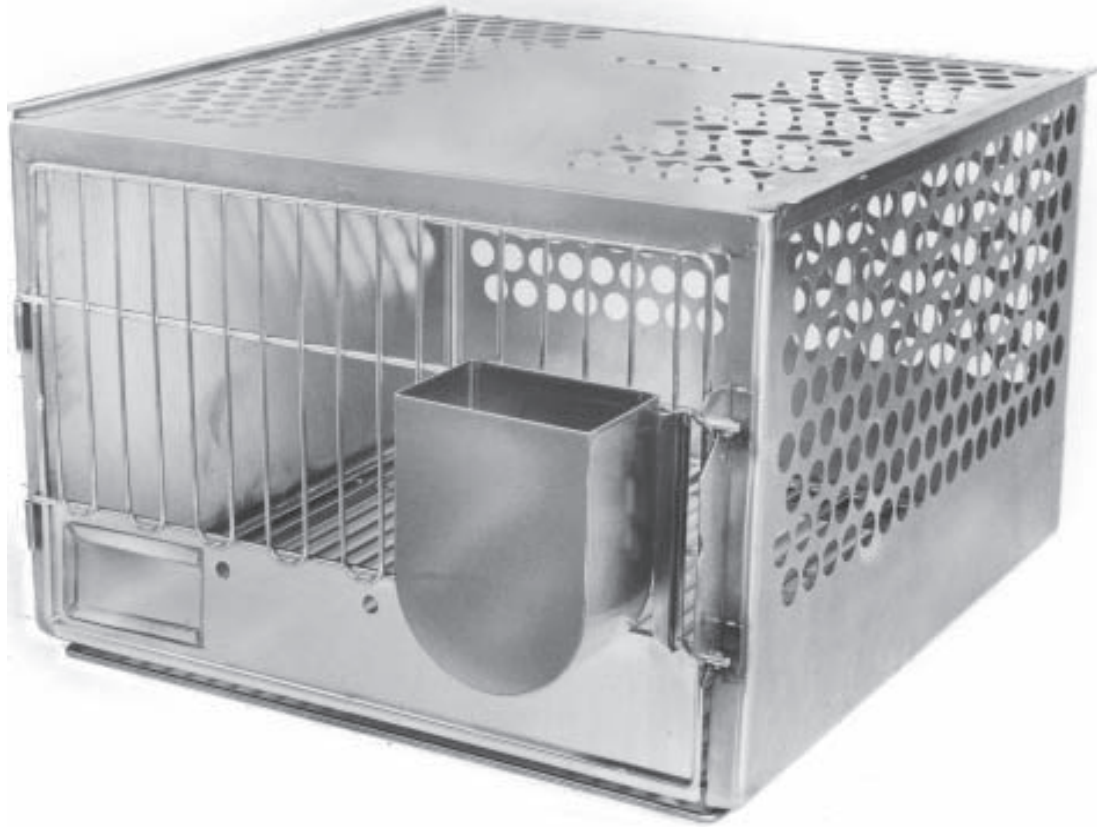


# STAINLESS STEEL DELUXE SUSPENDED RABBIT CAGES

Series S Cages fit Series S Racks



101012-00 Cage (shown)

This Stainless Steel Deluxe Suspended Rabbit Cage features a one-piece wrapper, consisting of the sides and back. The wrapper has a minimum of a .375" radius for all internal bends and coved corners.

There are 1" diameter observation/ventilation holes punched in the top, back, and one side of the cage. The back of the cage has a hole to accommodate a watering system.

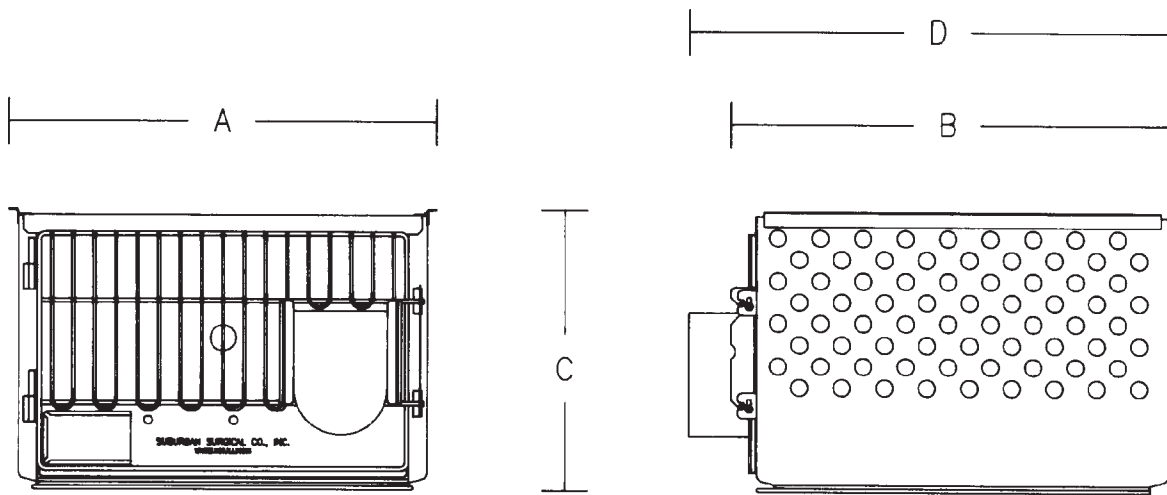
Each cage is supported by full-length suspension runners that allow complete interchangeability on selected types of racks for suspended rabbit cages.

The removable electropolished door has a rod-frame with vertical and horizontal rods in the upper portion and a deflector

panel in the lower portion. The deflector panel has a 5" wide by 3" high cardholder, and a provision for a sipper tube. Each cage is equipped with a removable 1 quart feeder, that is externally mounted. The door is latched with a two-point self-locking latch.

The removable electropolished floor with a rolled-edge strip animal resting surface, has a frame design that holds the floor away from the wrapper's deflector. The deflector's unique drip edge directs waste into the selected rack's system or collection pan.

The cage is also designed to support an optional metabolism collection pan on selected racks.



### STAINLESS STEEL DELUXE SUSPENDED RABBIT CAGES

PRODUCT NUMBER	CAGE AREA	ANIMAL SPACE		CAGE DIMENSIONS				FOR ANIMALS WEIGHING*
		ABOVE FLOOR	A	B	C	D		
101011-00	3.00 sq ft	15.000"	19.125"	25.875"	16.438"	28.250"	2-4 kg	
101012-00	4.00 sq ft	15.000"	25.125"	25.875"	16.438"	28.250"	4-5.4 kg	
101013-00	5.00 sq ft	15.000"	25.125"	31.875"	16.438"	34.250"	> 5.4 kg	

#### ADDITIONAL EQUIPMENT

Stainless steel rolled edge strip floor	Stainless steel feeder
201791 for 3 sq ft cage	200711 1qt. feeder
201792 for 4 sq ft cage	
204493 for 5 sq ft cage	

\*See page on animal space recommendations.

# STAINLESS STEEL ANGULAR RACKS WITH COLLECTION PANS FOR SUSPENDED RABBIT CAGES

Series S Racks support Series S Cages



101013-00 Cages (shown)

104890-00 Rack (shown)

This Stainless Steel Angular Rack with Collection Pans for Suspended Rabbit Cages is fabricated from die-formed angles and channels. The angle uprights' lower ends have caster couplers. The angle uprights, angle crossmembers, and channel crossmembers are butted at all joints and welded for strength.

Each cage is held securely in place by a pair of full-length cage runners that are welded to the rack crossmembers.

The rack is furnished with removable tapered collection pans supported by full-length runners welded to the rack crossmembers.

The rack has a glass beaded satin finish, removing any discoloration.

The rack is equipped with chrome plated swivel casters with 5" polyolefin wheels, two with wheel brakes. Swivel and axle bearings have seals and zerkl grease fittings.

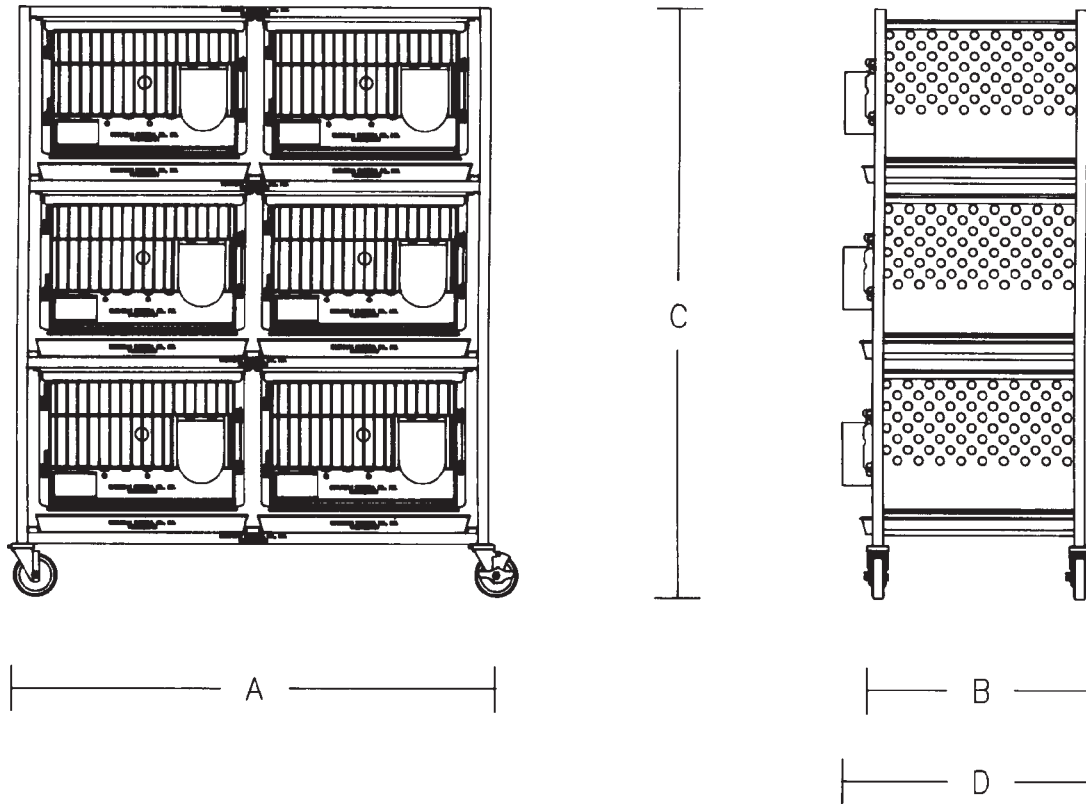
---

## OPTIONS

---

Stainless steel watering system  
CPVC watering system  
Stainless steel casters  
Stainless steel metabolism collection pans





**STAINLESS STEEL ANGULAR RACKS WITH COLLECTION PANS FOR SUSPENDED RABBIT CAGES**

PRODUCT NUMBER	SINGLE WIDTH CAGES	RACK CAPACITY CAGES WIDE	TIERS HIGH	RACK DIMENSIONS			
				WITHOUT CAGE A	B	C	WITH CAGE D
<b>For 3 square foot cages</b>							
104872-00	6	2	3	44.344"	26.625"	68.781"	29.375"
104873-00	6	3	2	64.188"	26.625"	48.375"	29.375"
104874-00	8	2	4	44.344"	26.625"	89.275"	29.375"
104875-00	9	3	3	64.188"	26.625"	68.781"	29.375"
<b>For 4 square foot cages</b>							
104881-00	6	2	3	56.344"	26.625"	68.781"	29.375"
104882-00	6	3	2	82.188"	26.625"	48.375"	29.375"
104883-00	8	2	4	56.344"	26.625"	89.250"	29.375"
104884-00	9	3	3	82.188"	26.625"	68.781"	29.375"
<b>For 5 square foot cages</b>							
104890-00	6	2	3	56.344"	32.625"	68.781"	35.375"
104891-00	6	3	2	82.188"	32.625"	48.375"	35.375"
104892-00	8	2	4	56.344"	32.625"	89.250"	35.375"
104893-00	9	3	3	82.188"	32.625"	68.781"	35.375"

**ADDITIONAL EQUIPMENT**

Stainless steel tapered collection pans

- |   |   |
|---|---|
| 604874 for 3 sq ft cages, 2 and 3 tiers high rack | 609260 for 3 sq ft cages, 4 tiers high rack |
| 604919 for 4 sq ft cages, 2 and 3 tiers high rack | 609261 for 4 sq ft cages, 4 tiers high rack |
| 604918 for 5 sq ft cages, 2 and 3 tiers high rack | 609262 for 5 sq ft cages, 4 tiers high rack |

Racks with other cage capacities available

# STAINLESS STEEL INTEGRAL RABBIT CAGE UNITS



101122-00 Cage unit (shown)

This Stainless Steel Tubular Frame for the Integral Rabbit Cage Unit is fabricated from 1" square tubing. The tubular uprights' upper ends are capped, the lower ends are fitted with caster couplers, and both ends are welded and ground smooth. The tubular crossmembers are butted at all joints and welded for strength.

Each tier of the unit has a solid one-piece wrapper, consisting of the sides and back. The wrapper is lowered from the top of each tier on the back and both sides for ventilation, and is welded to the frame.

The back of each tier is punched with two holes to accommodate a watering system.

Each tier has a pair of removable, electropolished doors. Each door has a rod-frame with vertical and horizontal rods in the upper portion and a deflector panel in the lower portion with a provision for a sipper tube. Each door has a removable external feeder with a baffle and a 5" wide by 3" high cardholder. In addition, each tier is equipped with two removable electropolished floors with rolled-edge strip animal resting surface supported on top of the wrapper's deflector,

directing waste into the removable tapered collection pan under each floor. Each collection pan is supported by the cage's pan runners, which are welded to the frame.

Each tier has a removable divider panel that divides the tier into two compartments when in place.

The frame has a glass beaded satin finish, removing any discoloration.

The rack is equipped with chrome plated swivel casters with 5" polyolefin wheels, two with wheel brakes. Swivel and axle bearings have seals and zerck grease fittings.

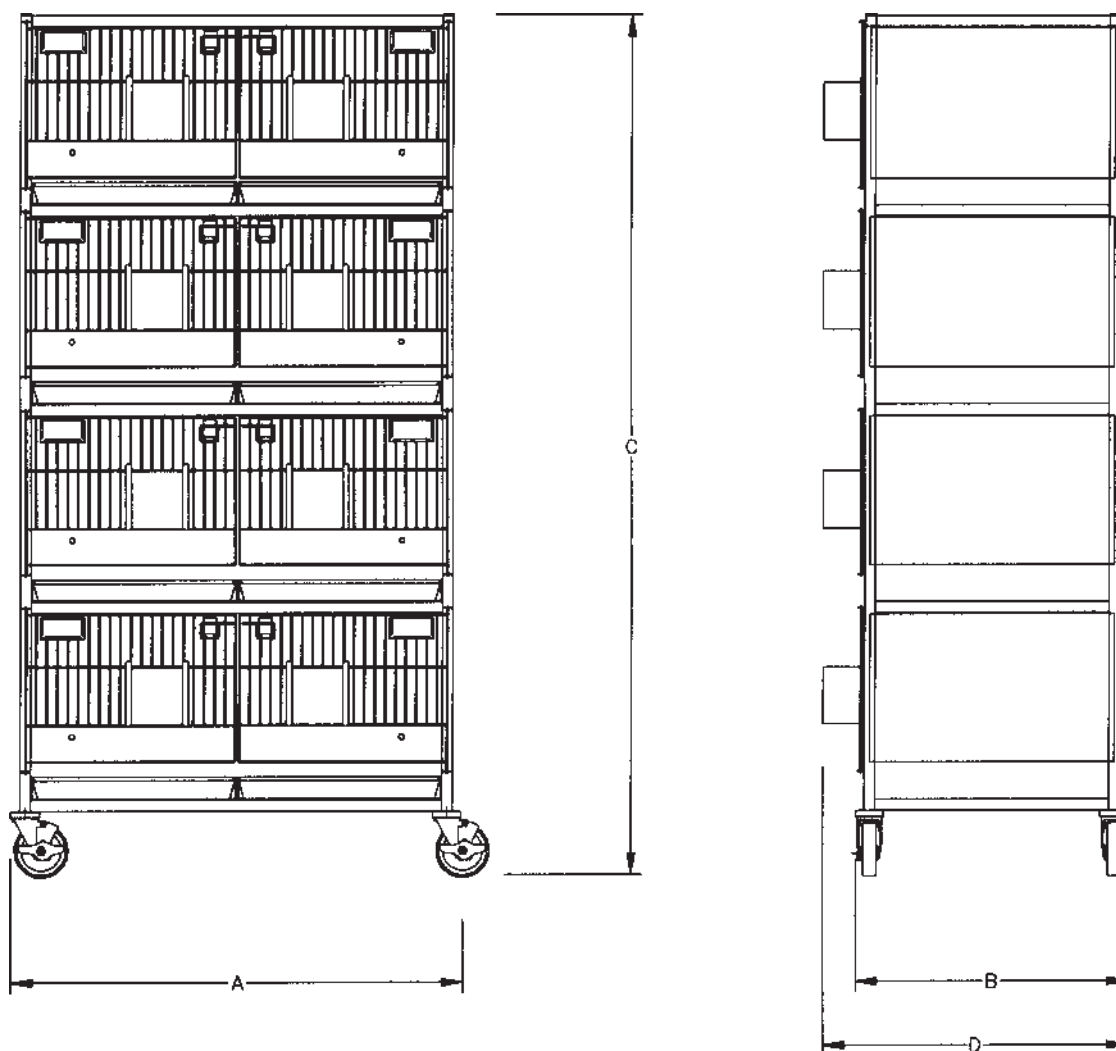
---

## OPTIONS

---

Stainless Steel watering system  
CPVC watering system  
Stainless Steel casters





### STAINLESS STEEL INTEGRAL RABBIT CAGE UNITS

PRODUCT NUMBER	ANIMAL SPACE		TIERS HIGH	COMPARTMENTS DIVIDER			CAGE DIMENSIONS			WITH FEEDER D	FOR ANIMALS WEIGHING**
	FLOOR AREA*	ABOVE FLOOR		OUT	IN	A	B	C			
101117-00	3.00 sq ft	16.000"	3	3	6	42.125"	25.625"	62.031"	28.312"	2-4 kg	
101118-00	3.00 sq ft	16.000"	4	4	8	42.125"	25.625"	80.312"	28.312"	2-4 kg	
101121-00	4.00 sq ft	16.000"	3	3	6	54.125"	25.625"	62.031"	28.312"	4-5.4 kg	
101122-00	4.00 sq ft	16.000"	4	4	8	54.125"	25.625"	80.312"	28.312"	4-5.4 kg	
101125-00	5.00 sq ft	16.000"	3	3	6	54.125"	31.625"	62.031"	34.312"	>5.4 kg	
101126-00	5.00 sq ft	16.000"	4	4	8	54.125"	31.625"	80.312"	34.312"	>5.4 kg	

#### ADDITIONAL EQUIPMENT

Stainless steel tapered collection pans  
 608665 for 3 sq ft cages  
 608464 for 4 sq ft cages  
 608609 for 5 sq ft cages

Stainless steel feeders  
 200711 1 qt. feeder

Stainless steel rolled edge strip floors  
 206541 for 3 sq ft cages  
 206461 for 4 sq ft cages  
 206518 for 5 sq ft cages

\* Per cage with compartment-divider in position.

\*\* See page on animal space recommendations