



## PRODUCT OVERVIEW

# SaniMister CS 2020

## Frontline Misting Tunnel

Apply a sanitizing agent in a mist to shipping containers, feed and bedding bags and other crates.

### KEY FEATURES AND BENEFITS

- Provide complete coverage of any product conveyed through the 20" wide x 20" high work opening
- Portable and easily moved within your facility
- Optimum conveyor speed of 30 - 40 feet per minute
- Constructed entirely of corrosion resistant materials
- Sprays have a capacity of 0.18 gallons per minute
- Dual 1 x 1 flat stainless steel belts

### KEY SPECIFICATIONS

- 33" wide x 60"l x 58.5" high
- Polished #16 ga. Type 304 stainless steel
- 110V / 1PH / 60 Hz, plug in type



# SaniMister CS 2020

## Frontline Misting Tunnel

### DESCRIPTION

The SaniMister CS 2020 Sanitizer is designed to provide complete coverage of any product conveyed through the 20" wide x 20" high work opening. Simply plug the machine into an 110V outlet and it's ready to sanitize your product(s). Dimensions: 33" w x 60" l x 58.5" high (excluding the conveyor.)

### FEATURES

The SaniMister CS 2020 is a self contained, portable sanitizer that is designed to be easily moved within a facility. Four 5" stainless steel swivel casters (with brakes) allow smooth transfer throughout the building. The SaniMister can also be built with a Bio-Seal for permanent pass through wall systems.

### CAPACITY

The conveyor is provided with a DC drive motor that has an infinite range of 0 – 50 feet per minute. Note: Optimum conveyor speed for sanitizing should be between 30 – 40 feet per minute, depending upon product being conveyed.

### CONSTRUCTION

The machine housing is constructed entirely of corrosion resistant materials as described below:

Housing	Polished #16 ga.Type 304 stainless steel
Covers/Doors	Polished #16 ga.Type 304 stainless steel
Supports	Type 304 stainless steel structures
Tank/cover	Plastic
Sprockets	Type 304 stainless steel
Conveyor	UHMWV plastic and stainless steel
Drive	Nylon, plastic and stainless steel
Piping	Stainless steel with plastic and plastic valves
Spray Nozzles	Acetal plastic with stainless steel filter screens
Casters	Type 304 stainless steel and polyurethane plastic wheels

### SPRAY SYSTEM

Spray nozzles are complete with 200 mesh filter screens that are easily removable for cleaning or replacement. They are strategically located above, below and on both sides of the SaniMister to ensure 100% coverage. The sprays have a capacity of 0.18 gpm and are provided with a throttling valve for optimum performance. The re-circulating tank has a capacity of 2 gallons and is complete with a drain valve and in-line pump suction strainer. Plastic curtains are provided at both ends of the SaniMister to contain sprayed mist within the tunnel area.

### CONVEYOR SYSTEM

The SaniMister is provided with dual 1 x 1 flat stainless steel belts. The sprays are located between the belts to ensure full spray impact on the product (no masking of the SaniMister by the conveyor.) An electric eye is mounted at the load end on the SaniMister and is designed to shut the pump off if no product has been conveyed for a pre-set period of time.

### UNLOAD CONVEYOR

The unload end of the SaniMister is provided with a pitched roller conveyor, collapsible from 8 ft. to 2 ft. For the convenience of mobility, the SaniMister is designed to be moved with the conveyor attached or detached.

### CONTROL PANEL

A plastic, Nema 4, control panel is provided and complete with motor starters, relays, timer for electric eye and the speed controller for the conveyor drive. In addition, plastic push button enclosures are provided at the load end for conveniently starting/stopping the SaniMister and at the unload end as an emergency stop. All wiring is provided in accordance with NEC requirements.

### CUSTOMER REQUIREMENTS

Customer to provide the following:

Electric	110V / 1PH / 60 Hz, plug in type
Fresh Water	2 gallons for tank, room temperature
Chemical	Proper water soluble sanitizing chemical

## MAINTENANCE RECOMMENDATIONS

### MISTING NOZZLES

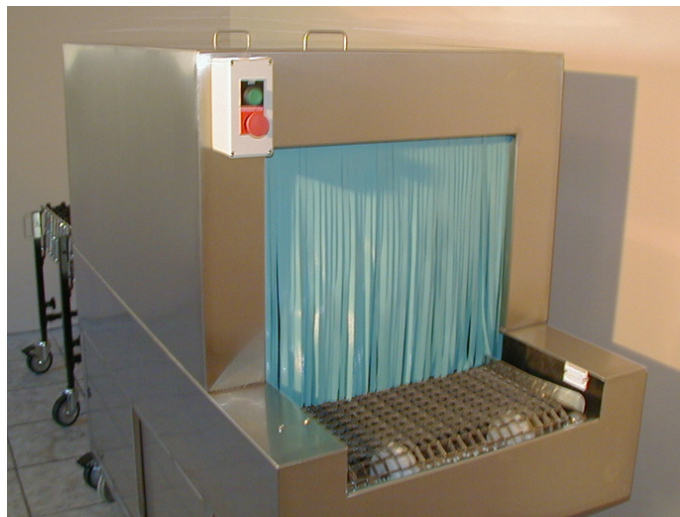
Nozzles should be cleaned once a month in an alcohol solution to remove any deposits from the stainless steel screens. The nozzles need only be hand tightened into the piping when replacing.

### RESERVOIR

Remove the reservoir tank from the quick disconnect fittings and rinse in warm water to remove any debris to avoid compromising the in-line pump filter. It is recommended that this be done on a monthly basis and more frequently if usage is heavy.

### DISINFECTANT

When using proper chemical, replace daily if usage is heavy (i.e. more than 20 times a day). Replace once a week if usage is light (i.e. 20 – 30 items for the week). This determination is at the discretion of the user.



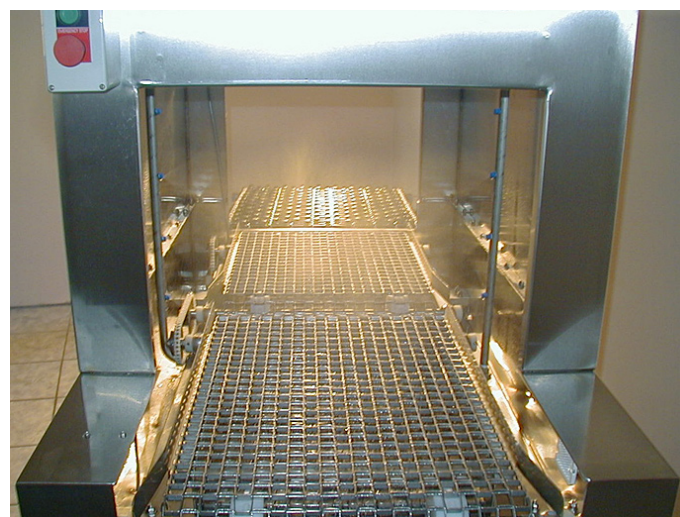
## OPTIONAL EQUIPMENT

### UNLOAD SHROUD

A removable shroud can be provided to mount on the unload end of the SaniMister in order to help contain misting vapors within the chamber. The shroud is 2 ft. long and is constructed of 20 ga. Type 304 stainless steel.

### BIO-SEAL

For built in pass through wall systems.



---

### DELIVERY

6-8 weeks from time of purchase / FOB shipping point.

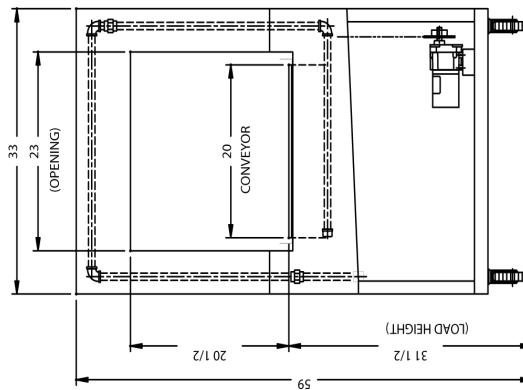
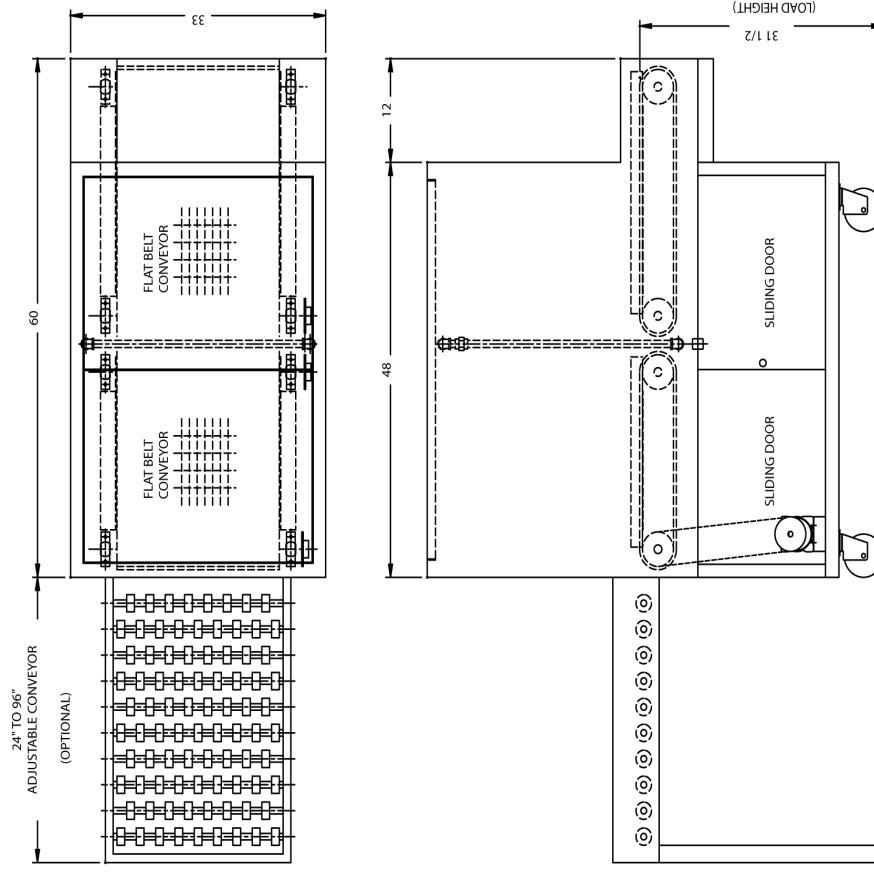
### TERMS

50% at time of order  
50% plus freight, Net 30



# SaniMister CS 2020

## Frontline Misting Tunnel



UNLOAD ELEVATION

DIRECTION OF CONVEYOR TRAVEL

VIKING MEDICAL MEDFORD LAKES, NJ	
CS2020 MISTING TUNNEL	DRAWN: D.P. DATE: 7-22-05
	DWG. NO. 2020 PROP