

MINI-ROOM WALK-IN CONTROLLED TEMPERATURE CHAMBERS/STABILITY CHAMBERS



Specially designed to reproduce a desired environment. Applications include: Stability storage, biological research, shelf life testing and many other uses. 10,000 models available to ship in ten days.

STANDARD FEATURES

- Temperatures: +4°C, -20°C, -30°C, +2°C to +55°C (ideal for stability testing at +25°C and +40°C)
- Capsule-Pak™ refrigeration system (ceiling or wall mount)
- Air-cooled condensing unit
- 26 gauge stucco embossed coated steel on all surfaces except interior floor
- Smooth aluminum interior floor (on models with floor)
- Floorless models supplied with NSF listed vinyl sealers
- Stocked for 10 day shipment
- Full 4" thick panels foamed-in-place with HFC-245fa polyurethane insulation which is CFC and HCFC free
- 26" wide, self-closing doors
- Heavy duty adjustable cam-lift door hinges - one spring loaded (patented)
- Spring actuated door closer
- Deadbolt locking handle with independent key/padlock feature and inside safety release
- Magnetic gasket
- Digital thermometer/Light switch
- Floor double sweep gasket
- Perimeter heater wire
- Vapor-proof light
- Registered by UL to ISO 9001
- NSF, UL flame spread 25 on all panels; UL and CSA listing on door sections
- UL and C-UL electrical listing on complete Capsule-Pak™ refrigeration systems
- City of Houston listed
- Oregon State listed
- City of LA listed
- California State listed
- USDA accepted
- Fifteen year panel warranty
- Five year compressor warranty
- 18 months parts and labor warranty

INDOOR MODELS:

- Hot gas condensate vaporizer

OUTDOOR MODELS:

- White membrane roof and trim
- Refrigeration hood
- Door hood (optional)
- -30°C ambient controls

OPTIONAL FEATURES*

- Humidification (available on +2°C to +55°C warm rooms only). Provides ambient to 95% at +2°C to +40°C and 90% at +41°C to +55°C
- Microprocessor based control panel (standard on warm room models)
- Viewport door (standard size is 14"x14")

OPTIONAL FEATURES**

- Chart recorder
- Condensing unit air deflector kit
- Duplex electrical outlets
- Exterior ramp
- Floor treadplate kit
- Heater kit for cooler located outdoors in below 0°C ambient
- Hi/Lo alarm
- Leak detector/alarm (may be a requirement in some areas)
- U-shaped shelving system
- Remote Capsule-Pak™ refrigeration systems
- Transformer kit
- 30" or 36" width door



* Options ship in 15-20 working days (Top mount refrigeration only)

** Most options are available 10 working days from receipt of order. Please contact us for specific questions.

*** Model shown with custom white exterior.

WALK-IN SPECIFICATIONS

Mini-Room walk-ins are built of modular panels and are insulated with foamed-in-place polyurethane insulation. Each panel is designed to ensure ease of installation, long term reliability and high insulating efficiency.

A. All panels are manufactured with male and female mating rails to ensure proper alignment during installation. The polyurethane insulation wraps around the return bend metal seams on both sections to create a lightweight panel of exceptional strength and durability. All panels are a full four (4) inches thick and provide a superior insulating value.

B. The foamed-in-place cam locking fasteners ensure an airtight seal for maximum energy efficiency.

C. Mini-Room panel gaskets around the outer perimeter of the panel are continuous, without cuts or breaks at corners. The Nor-Lake patented gasket design provides a foamed-in-place gasket as an integral part of the panel. Gaskets cannot fall off or pull off during shipment or installation.

D. Panels lock together tightly to assure an energy efficient walk-in.

E. Edge caps for ends of floor and ceiling panels are foamed-in-place rather than overlapped or mechanically fastened. Edge caps cannot come loose, and they stay in place through the life of the walk-in.

F. Panel Finishes: Interior and exterior surfaces are 26 gauge corrosion resistant stucco embossed coated steel. Models supplied with a floor will include a smooth aluminum interior floor surface.

Insulation: Panels are four (4) inches thick, metal clad and foamed-in-place with HFC-245fa polyurethane insulation which is CFC and HCFC free.

Optional Features:

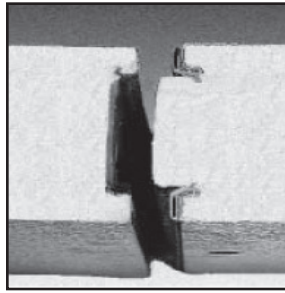
G. 115/60/1 weatherproof duplex receptacles are surface mounted to interior wall panels of the Prefabricated Room with conduit stubbed to the ceiling topside to a junction box.

H. Hi/Lo Alarm provides accurate temperature monitoring with easy to read LED display and audible alert when temperature is out of tolerance.

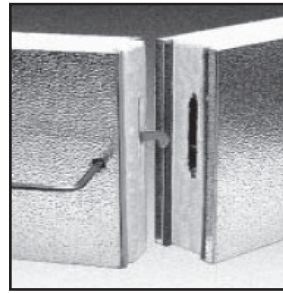
I. The Nor-Lake Scientific family of control panels offers a variety of control needs including temperature monitoring of air and product temperatures, monitoring °C or °F, adjustment of temperature, documentation of temperature on chart recorders and audible and visual alarms. Advanced control provides a +/- 0.15°C and +/- 1.0% accuracy.

Other features of the control panel are emergency shutdown switch, easily adjustable air and product Hi/Lo temperature and alarm settings, key lock door for security, touch pad programming, easy to read alphanumeric displays, dry contacts for remote alarm and power failure alarm.

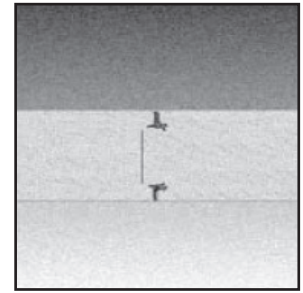
Custom designed control panels are available for unique applications.



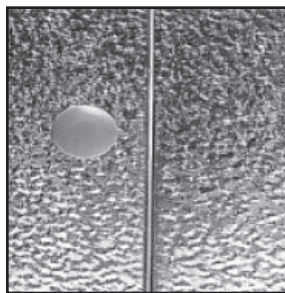
A.



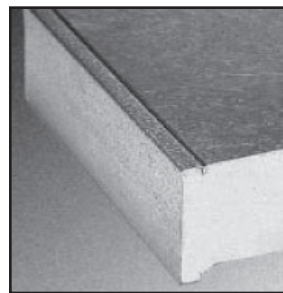
B.



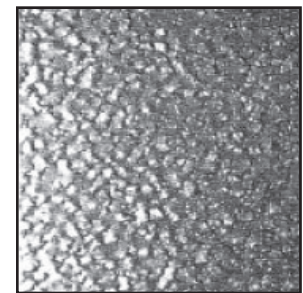
C.



D.



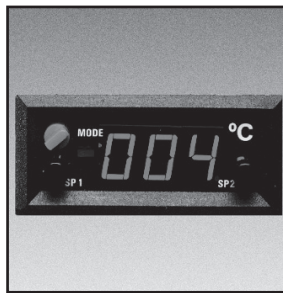
E.



F.



G.



H.



I.

DOOR

Door sections are factory tested to assure proper fit, performance and alignment. All doors feature a stepped profile design that serves as a barrier to air flow which results in an energy efficient door system.

Each Mini-Room walk-in compartment is equipped with a 26" wide door. Optional 30" and 36" wide doors are available. The height of the door opening varies with the series of Mini-Room walk-in ordered. The 45 Series has a 59" high door, the Standard Series (6'7" high) has a 66" high door and the 74 and 77 Series Mini-Room walk-ins have a 78" high door. The door is self-closing, flush mounted, infitting and constructed to incorporate heavy duty, molded ABS breaker which is permanently foamed-in-place.

Doors are available with right or left side hinges and include two cam-lift hinges (one with spring assist), patented field adjustable top hinge with locking set screw, spring actuated door closer, NL 9800 deadbolt locking handle with independent key/padlock feature and inside safety release. The doors are pre-hung in a four foot wide frame panel which is equipped with replaceable perimeter heater wire, magnetic stainless steel trim, digital thermometer, vapor-proof light fixture and switch with exterior pilot indicator light.

The door section is completely pre-wired within concealed conduit inside the door frame panel. 115/60/1 electrical is field wired to a junction box which is surface mounted on the interior frame above the vapor proof light fixture.

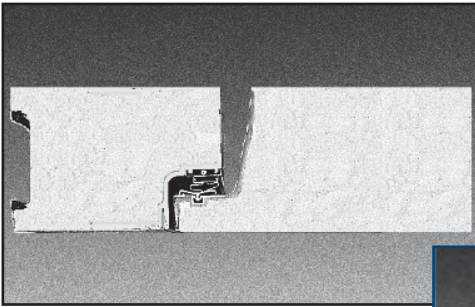
Hinges and door handle are mounted to 1/2" synthetic insulated tapping plates. Each door section is complete with a FRP (fiberglass reinforced plastic) heated threshold.

FLOOR CONSTRUCTION

Floor panels (when supplied) are similar in construction to the wall panels except they are made to withstand uniformly distributed floor loads of up to 800 pounds per square foot. The interior floor metal is smooth aluminum.

The 74 Series, floorless models, are supplied with a patented vinyl floor sealer to stop conductivity at floor level. This unique sealer sits flat on existing floors and fits tightly against the interior/exterior wall panels. The walk-in wall panel is supported on the shoulder of the sealer so the foam edge is free of compressing weight. The vinyl floor sealer is NSF listed.

DOORS FEATURE A STEPPED PROFILE DESIGN



VAPOR PROOF LIGHT FIXTURE



VIEWPORT

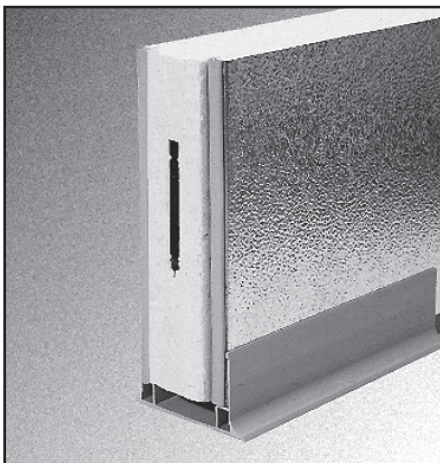
Heated viewport option offers unobstructed view of interior and contents without having to open the door, thus protecting products or experiments sensitive to temperature changes. Standard size is 14"x14". Picture shown is not standard size.



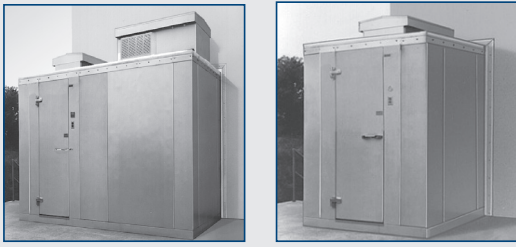
DEADBOLT LOCKING HANDLE

NL 9800 Deadbolt locking handle with independent key/padlock feature and inside safety release.

FLOORLESS MODELS ARE SUPPLIED WITH A PATENTED VINYL FLOOR SEALER



PHYSICAL SPECIFICATIONS



OUTDOOR MODELS

All Mini-Room walk-ins installed outdoors include a weather protection kit consisting of: One piece, 35 mill, white membrane roof material which requires no seaming or gluing to the top of the Mini-Room walk-in ceiling panels.

Plastic strips for flashing the membrane roof material to the side of the Mini-Room walk-in wall panels are included.

Trim is secured to the Mini-Room wall panels with self drilling and self tapping TEK screws. In applications where the Mini-Room walk-in is installed next to a building, the trim can be used to secure the turned up membrane roof material to the building wall, with fasteners supplied by the equipment installer. Above door rain hoods are an option and should be included on installations where the door panels are exposed to the outdoor weather.

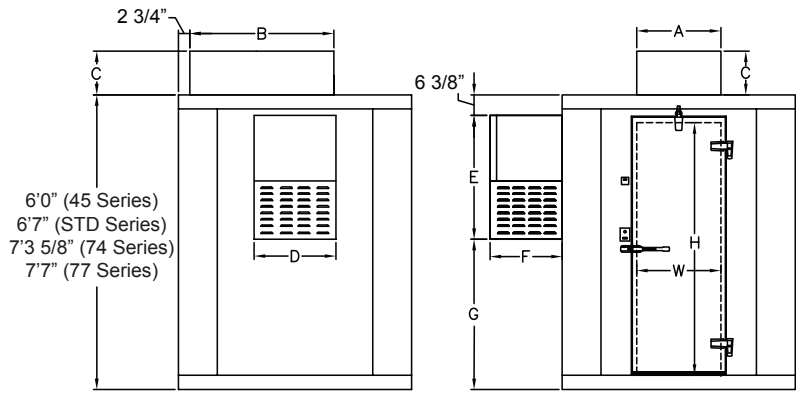
APPROVALS

Mini-Room walk-in construction is approved by the National Sanitation Foundation and shall have the N.S.F. seal on the door section. Walk-in panels shall have a UL flame spread rating of 25. The door section is UL, C-UL and CSA listed for electrical safety.

- Registered by UL to ISO 9001
- City of Houston listed
- Oregon State listed
- California State listed
- CEC
- City of LA listed
- USDA accepted



Nor-Lake, Inc.
Registered to ISO 9001:2008
File No. 10001816



6'0" (45 Series)
6'7" (STD Series)
7'3 5/8" (74 Series)
7'7" (77 Series)

W	H	Model
26"	59"	45 Series
26"	66"	STD Series
26"	78"	74 Series
26"	78"	77 Series

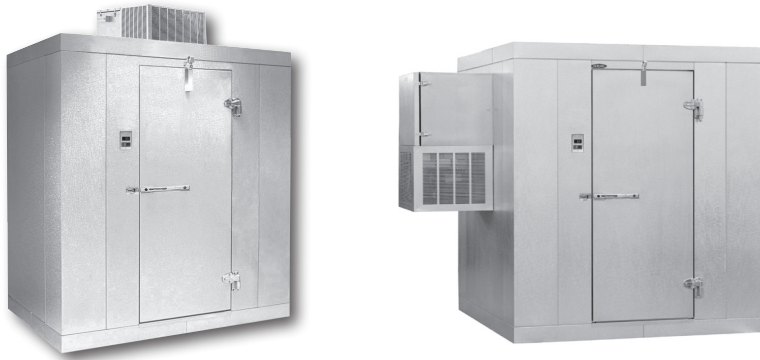
Door Opening Size

Capsule-Pak™ Refrigeration Systems

Model Number	"A"	"B"	"C"	"D"	"E"	"F"	"G" Dimension			
							45 Series	Std. Series	74 Series	77 Series
CPB050DC-A	29"	44-1/2"	14-3/4"	N/A	N/A	N/A	N/A	N/A	N/A	N/A
CPBM050DC-A**	29"	44-1/2"	14-3/4"	N/A	N/A	N/A	N/A	N/A	N/A	N/A
CPWM050DC-A**	29"	44-1/2"	14-3/4"	N/A	N/A	N/A	N/A	N/A	N/A	N/A
CPB075DC-A	37"	48-1/4"	14-3/4"	N/A	N/A	N/A	N/A	N/A	N/A	N/A
CPBM075DC-A**	37"	48-1/4"	14-3/4"	N/A	N/A	N/A	N/A	N/A	N/A	N/A
CPWM075DC-A**	37"	48-1/4"	14-3/4"	N/A	N/A	N/A	N/A	N/A	N/A	N/A
CPB100DC-A	34-1/2"	59"	21-1/4"	N/A	N/A	N/A	N/A	N/A	N/A	N/A
CPBM100DC-A**	34-1/2"	59"	21-1/4"	N/A	N/A	N/A	N/A	N/A	N/A	N/A
CPWM100DC-A**	34-1/2"	59"	21-1/4"	N/A	N/A	N/A	N/A	N/A	N/A	N/A
CPF060DC-A	39"	44-1/2"	14-3/4"	N/A	N/A	N/A	N/A	N/A	N/A	N/A
CPFM060DC-A**	39"	44-1/2"	14-3/4"	N/A	N/A	N/A	N/A	N/A	N/A	N/A
CPF075DC-A	39"	48-1/4"	14-3/4"	N/A	N/A	N/A	N/A	N/A	N/A	N/A
CPFM075DC-A**	39"	48-1/4"	14-3/4"	N/A	N/A	N/A	N/A	N/A	N/A	N/A
CPF075DC-B	54"	24-1/4"	14-3/4"	N/A	N/A	N/A	N/A	N/A	N/A	N/A
CPF100DC-A	36-1/2"	59"	21-1/4"	N/A	N/A	N/A	N/A	N/A	N/A	N/A
CPFM100DC-A**	36-1/2"	59"	21-1/4"	N/A	N/A	N/A	N/A	N/A	N/A	N/A
CPF150DC-A	36-1/2"	59"	21-1/4"	N/A	N/A	N/A	N/A	N/A	N/A	N/A
CPFM150DC-A**	36-1/2"	59"	21-1/4"	N/A	N/A	N/A	N/A	N/A	N/A	N/A
CPX100DC-A	39"	48-1/4"	14-1/2"	N/A	N/A	N/A	N/A	N/A	N/A	N/A
CPXM100DC-A**	39"	48-1/4"	14-1/2"	N/A	N/A	N/A	N/A	N/A	N/A	N/A
CPX150DC-A	36-1/2"	59"	21-1/4"	N/A	N/A	N/A	N/A	N/A	N/A	N/A
CPXM150DC-A**	36-1/2"	59"	21-1/4"	N/A	N/A	N/A	N/A	N/A	N/A	N/A
CPX151DC-A	36-1/2"	59"	21-1/4"	N/A	N/A	N/A	N/A	N/A	N/A	N/A
CPB050DCO-A	32"	44-1/2"	14-7/8"	N/A	N/A	N/A	N/A	N/A	N/A	N/A
CPB075DCO-A	43"	48-1/4"	14-7/8"	N/A	N/A	N/A	N/A	N/A	N/A	N/A
CPB100DCO-A	40-1/2"	59"	22-7/8"	N/A	N/A	N/A	N/A	N/A	N/A	N/A
CPF060DCO-A	43"	44-1/2"	15-7/8"	N/A	N/A	N/A	N/A	N/A	N/A	N/A
CPF075DCO-A	43"	48-1/4"	15-7/8"	N/A	N/A	N/A	N/A	N/A	N/A	N/A
CPF100DCO-A	40-1/2"	59-1/2"	22-7/8"	N/A	N/A	N/A	N/A	N/A	N/A	N/A
CPF150DCO-A	40-1/2"	59-1/2"	22-7/8"	N/A	N/A	N/A	N/A	N/A	N/A	N/A
CPF151DCO-A	40-1/2"	59-1/2"	22-7/8"	N/A	N/A	N/A	N/A	N/A	N/A	N/A
CPB050DW	N/A	N/A	N/A	25-1/4"	38-1/4"	22-1/4"	27-3/8"	34-3/8"	43"	46-3/8"
CPB075DW	N/A	N/A	N/A	44-1/8"	45"	30"	N/A	27-5/8"	36-1/4"	39-5/8"
CPB100DW	N/A	N/A	N/A	44-1/8"	45"	30"	N/A	27-5/8"	36-1/4"	39-5/8"
CPF060DW	N/A	N/A	N/A	25-1/4"	38-1/4"	22-1/4"	27-3/8"	34-3/8"	43"	46-3/8"
CPF075DW	N/A	N/A	N/A	25-1/4"	38-1/4"	22-1/4"	N/A	34-3/8"	43"	46-3/8"
CPF100DW	N/A	N/A	N/A	44-1/8"	45"	30"	N/A	27-5/8"	36-1/4"	39-5/8"
CPF150DW	N/A	N/A	N/A	44-1/8"	45"	30"	N/A	27-5/8"	36-1/4"	39-5/8"
CPX100DW	N/A	N/A	N/A	25-1/4"	38-1/4"	22-1/4"	N/A	34-3/8"	43"	46-3/8"
CPX150DW	N/A	N/A	N/A	44-1/8"	45"	30"	N/A	27-5/8"	36-1/4"	39-5/8"
CPX151DW	N/A	N/A	N/A	44-1/8"	45"	30"	N/A	27-5/8"	36-1/4"	39-5/8"
CPB050DWO	N/A	N/A	N/A	25-1/4"	42"	22-3/4"	27-3/8"	34-3/8"	43"	46-3/8"
CPB075DWO	N/A	N/A	N/A	44-1/8"	48-3/4"	30-1/2"	N/A	27-5/8"	36-1/4"	39-5/8"
CPB100DWO	N/A	N/A	N/A	44-1/8"	48-3/4"	30-1/2"	N/A	27-5/8"	36-1/4"	39-5/8"
CPF060DWO	N/A	N/A	N/A	25-1/4"	42"	22-3/4"	27-3/8"	34-3/8"	43"	46-3/8"
CPF075DWO	N/A	N/A	N/A	25-1/4"	42"	22-3/4"	N/A	34-3/8"	43"	46-3/8"
CPF100DWO	N/A	N/A	N/A	44-1/8"	48-3/4"	30-1/2"	N/A	27-5/8"	36-1/4"	39-5/8"
CPF150DWO	N/A	N/A	N/A	44-1/8"	48-3/4"	30-1/2"	N/A	27-5/8"	36-1/4"	39-5/8"
CPF151DWO	N/A	N/A	N/A	44-1/8"	48-3/4"	30-1/2"	N/A	27-5/8"	36-1/4"	39-5/8"

* Consideration must be given to accessibility for service & free condenser air flow. Consult Factory with installation questions.
** +90°F ambient or less and 50% rh
Subject to change without notice

CAPSULE PAK™ REFRIGERATION SYSTEM SPECIFICATIONS



Capsule-Pak™ refrigeration systems consist of a unitized system which is factory assembled, wired, charged, tested and fully equipped for insertion into a factory prepared walk-in opening. Models are available for wall or ceiling mounting for use on indoor or outdoor installations. Models are available for interior compartment design temperatures of +4°C, -20°C, -30°C and +2°C to +55°C.

Capsule-Pak™ Refrigeration Systems

Model Number	Horsepower	Volts/Hz/Ph	Defrost AMPS	Total System AMPS	Minimum Circuit AMPS	Maximum Fuse Size
CPB050DC-A+	5/8	115/60/1	N/A	14.3	N/A	20
CPBM050DC-A	5/8	115/60/1	N/A	14.3	16.1	20
CPWM050DC-A	5/8	115/60/1	N/A	14.3	16.1	20
CPB075DC-A+	7/8	208-230/60/1	N/A	8.6	N/A	20
CPBM075DC-A	7/8	208-230/60/1	N/A	8.6	9.3	15
CPWM075DC-A	7/8	208-230/60/1	N/A	8.6	10.8	15
CPB100DC-A+	1	208-230/60/1	N/A	7.7	N/A	15
CPBM100DC-A	1	208-230/60/1	N/A	7.7	16.5	20
CPWM100DC-A	1	208-230/60/1	N/A	7.7	16.5	20
CPF060DC-A	5/8	208-230/60/1	6.95	7.7	9.2	15
CPFM060DC-A**	5/8	208-230/60/1	6.95	7.7	9.2	15
CPF075DC-A+	3/4	208-230/60/1	N/A	7.0	N/A	15
CPFM075DC-A	3/4	208-230/60/1	6.8	7.2	9.75	15
CPF075DC-B+	3/4	208-230/60/1	N/A	5.8	N/A	15
CPF100DC-A+	1	208-230/60/1	N/A	7.5	N/A	15
CPFM100DC-A	1	208-230/60/1	8.8	8.5	10.2	15
CPF150DC-A	1-1/2	208-230/60/1	12.8	12.0	13.9	20
CPFM150DC-A	1-1/2	208-230/60/1	12.8	12.0	13.9	20
CPX100DC-A **	1	208-230/60/1	13.4	8.3	13.5	15
CPXM100DC-A **	1	208-230/60/1	13.4	8.3	13.5	15
CPX150DC-A *	1-1/2	208-230/60/1	3.6	11.4	15.2	20
CPXM150DC-A*	1-1/2	208-230/60/1	9.3	11.4	15.2	20
CPX151DC-A *	1-1/2	230/60/1	3.5	15.3	19.7	25
CPB050DCO-A	5/8	115/60/1	N/A	12.0	15.3	20
CPB075DCO-A	7/8	208-230/60/1	N/A	8.6	12.0	15
CPB100DCO-A	1	208-230/60/1	N/A	8.2	15.2	20
CPF060DCO-A	5/8	208-230/60/1	7.1	7.4	11.4	15
CPF075DCO-A	3/4	208-230/60/1	6.7	7.0	9.65	15
CPF100DCO-A	1	208-230/60/1	8.9	8.6	10.3	15
CPF150DCO-A	1-1/2	208-230/60/1	10.9	9.8	12.0	15
CPF151DCO-A	1-1/2	208-230/60/1	8.45	11.72	13.95	20
CPB050DW+	5/8	115/60/1	N/A	11.2	N/A	20
CPB075DW+	3/4	208-230/60/1	N/A	8.7	N/A	15
CPF060DW **+	5/8	208-230/60/1	8.34	8.6	8.34	20
CPF075DW **	3/4	208-230/60/1	9.9	7.9	9.9	15
CPF100DW	1	208-230/60/1	7.5	8.5	10.1	15
CPF150DW	1-1/2	208-230/60/1	7.1	11.2	14.2	20
CPX100DW **	1	208-230/60/1	8.3	8.7	9.3	15
CPX150DW	1-1/2	208-230/60/1	7.1	11.4	14.9	20
CPX151DW	1-1/2	230/60/1	7.1	15.3	19.5	25
CPB050DWO	5/8	115/60/1	N/A	12.8	16.1	20
CPB075DWO **	7/8	208-230/60/1	N/A	8.7	12	15
CPF060DWO **	5/8	208-230/60/1	9.0	9.0	12.6	20
CPF075DWO **	3/4	208-230/60/1	9.9	7.0	9.9	15
CPF100DWO **	1	208-230/60/1	7.5	8.5	10.1	15
CPF150DWO **	1-1/2	208-230/60/1	7.5	11.5	14.6	20
CPF151DWO **	1-1/2	208-230/60/1	7.6	11.4	14.4	20

The Capsule-Pak™ system evaporator section consists of an integral factory assembled component of the complete Capsule-Pak™ refrigeration system. The evaporator section is designed to be located entirely outside the walk-in with no intrusions into the refrigerated space. The evaporator enclosure is constructed utilizing foamed-in-place polyurethane insulation and is equipped with a removable, gasketed access cover.

All indoor Capsule-Pak™ models are equipped with a discharge gas condensate vaporizer which requires no plumbing. All outdoor Capsule-Pak™ models are equipped with low ambient controls consisting of crankcase heater, flooded condenser head pressure control and pumpdown cycle.

All standard Capsule-Pak™ refrigeration systems are stocked for 10 day shipment.

All standard Capsule-Pak™ refrigeration systems are listed, approved or certified by UL (Underwriters Laboratories) and C-UL (Canadian UL).

Note: Allow a minimum of 6" clearance above the Capsule-Pak™ system.

* Hot gas defrost

** These systems have 115 volt fan motors and/or drain line heaters which will require 115/208-230/60/1, AC 4 wire service

+ Cord Connected Equipment

Subject to change without notice

OPTIONAL FLOOR TREAD PLATE SPECIFICATIONS

Floor Tread Plate Kits of 1/8" high tensile strength aluminum diamond tread plate are pre-cut to fit interior floor space of any Mini-Room model. Offers superior corrosion resistance and provides additional protection to the interior floor surface for applications requiring heavy product load. Installation of tread plate floor kit is completed by the equipment installer.

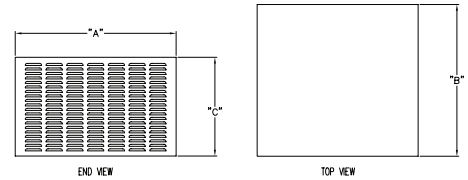
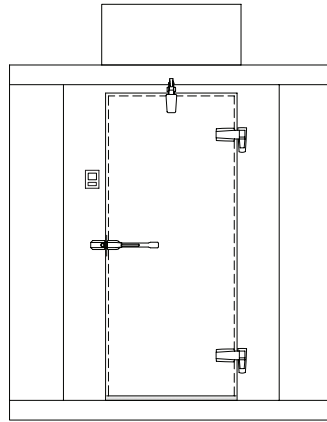
OPTIONAL EXTERIOR RAMP

Exterior ramp with overall dimensions of 36" wide and extends 25-1/2" from the front of the walk-in. The ramp surface will rise at an 8 degree angle from the finished customer floor to the 4" height of the interior walk-in floor. Ramp and door threshold are designed to allow the ramp to be removed when not in use.

OPTIONAL HEATER KIT

When a Mini-Room refrigerator is installed outdoors in a location where the ambient temperature can be below freezing for extended periods of time, it may be necessary to add heat to the interior compartment to avoid the freezing of product. In these cases the Mini-Room can include a heater kit which consists of a 2-1/2" deep x 30" long base board heater. The heater is 120 volt, 750 watt, and draws 6.5 AMPS. The base board heater shall be field installed to the interior wall, at floor level, and located in an area which doesn't interfere with product storage. A medium temperature thermostat is included with the kit and is wired to the base board heater and set to the desired cooler temperature. It is recommended that the heater system is wired to a separate electrical breaker which can be turned off in the warm seasons of the year. This will eliminate any chance of accidental movement of the thermostat adjustment and possible spoiling of product.

NOR-LAKE SCIENTIFIC REMOTE CAPSULE PAK™ REFRIGERATION SYSTEMS



Remote Capsule-Pak™ Refrigeration Systems

		CONDENSING UNIT					EVAPORATOR UNIT				
Model Number	Ref.	Ref. Opening Size	Voltage	Cond Amps	Min. Circuit Amps	Max Fuse Size	Voltage	Defrost Amps	Evap Amps	Min. Circuit Amps	Max Fuse Size
CEILING MOUNT SYSTEMS											
RCPB050DC-A-x	R404	SMALL	115/60/1	13.5	14.7	25	115/60/1	N/A	1.2	1.5	15
RCPB075DC-A-x	R404	MEDIUM	208-230/60/1	9.7	10.8	15	208-230/60/1	N/A	1.1	1.3	15
RCPB100DC-A-x	R404	LARGE	208-230/60/1	8.2	13.8	20	208-230/60/1	N/A	1	1.0	15
RCPP060DC-A-x	R404	MEDIUM	208-230/60/1	6.8	11.0	15	115/60/1	13.2	2.1	13.2	15
RCPP075DC-A-x	R404	MEDIUM	208-230/60/1	7.5	9.2	15	208-230/60/1	6.7	2.2	6.7	15
RCPP100DC-A-x	R404	LARGE	208-230/60/1	7.5	9.2	15	208-230/60/1	8.8	1.2	8.8	15
RCPP150DC-A-x	R404	LARGE	208-230/60/1	8.7	10.9	15	208-230/60/1	10.7	1.1	10.7	15
WALL MOUNT SYSTEMS											
RCPB050DW-x	R404	SMALL	115/60/1	11.7	14.3	20	115/60/1	N/A	1.7	2	15
RCPB075DW-x	R404	LARGE	208-230/60/1	8.7	9.1	15	208-230/60/1	N/A	1.0	1.3	15
RCPP060DW-x	R404	SMALL	208-230/60/1	9.0	9.1	15	115/60/1	8.6	1.6	10.8	15
RCPP075DW-x	R404	SMALL	208-230/60/1	5.6	6.6	15	115/60/1	9.9	1.4	9.9	15
RCPP100DW-x	R404	LARGE	208-230/60/1	7.4	8.9	15	208-230/60/1	7.1	1.1	7.1	15
RCPP150DW-x	R404	LARGE	208-230/60/1	10.5	13.4	20	208-230/60/1	7.1	1	7.1	15

x= Enter the desired line length (5 feet to 50 feet)

These systems include ambient controls, weather-proof hoods, precharged systems with quick connects for simple field connections to precharged lines of your choice. Consult factory for application, pricing and ship date availability.



MINI-ROOM WALK-IN SIZES AVAILABLE

SINGLE COMPARTMENT SIZES

The 45 Series is available in one size which is 4' wide x 5' long x 6'-0" high. This model is supplied with a walk-in floor.

The Standard Series of Mini-Room walk-ins are all 6'-7" high and are all supplied with a floor. The sizes available are as follows: 4' wide x 6' long, 6' wide x 6' long, 6' wide x 8' long, 6' wide x 10' long, 6' wide x 12' long, 8' wide x 8' long, and 8' wide by x 10' long. Cold and warm rooms available in 8' wide x 12' long and 8' wide x 14' long.

The 77 Series of Mini-Room walk-ins are all 7'-7" high and are all supplied with a floor. The sizes available are as follows: 6' wide x 6' long, 6' wide x 8' long, 6' wide x 10' long, 6' wide x 12' long, 8' wide x 8' long, and 8' wide x 10' long. Cold and warm rooms available in 8' wide x 12' long and 8' wide x 14' long.

The 74 Series of Mini-Room walk-ins are all 7'-3 5/8" high and are all supplied without a floor. Wall panels are installed on the top of NSF listed vinyl sealers provided. The sizes available are as follows: 6' wide x 6' long, 6' wide x 8' long, 6' wide x 10' long, 6' wide x 12' long, 8' wide x 8' long, and 8' wide x 10' long. Cold and warm rooms available in 8' wide x 12' long and 8' wide x 14' long.

COMBINATION MINI-ROOM COMPARTMENT SIZES:

The Mini-Room combination refrigerator/freezer line is available in 6'-7" high and 7'-7" high models and are all supplied complete with a floor. All models are available in two widths 6' wide and 8' wide. The overall length of the combination Mini-Room is determined by the size of the refrigerator compartment and freezer compartment desired. The available sizes are the same as available in their mating single compartment models.

EXAMPLE #1: If it is determined that a 6' wide combination model is required, the choices for refrigerator and freezer compartment lengths are 6', 8', 10' and 12'. Therefore, if both refrigerator and freezer are to have lengths of 8', the overall combination dimensions will be 6' wide x 16' long.

EXAMPLE #2: If it is determined that a 8' wide combination model is required, the choices for refrigerator and freezer compartment lengths are 6', 8' and 10'. Therefore, if the refrigerator to be 8' long and the freezer is to be 6' long, the overall combination dimensions will be 8' wide x 14' long.

SHELVING KITS

Shelving kits specifically designed for Nor-Lake Mini-rooms and Environmental Rooms are offered as an optional extra. These kits are shipped with all the necessary components. The shelving sets are coded to correspond to the walk-in configuration ordered and are offered in either 3, 4, 5 or 6 tiers.

TWO TYPES OF SHELVING SYSTEMS ARE AVAILABLE FROM NOR-LAKE.

A. Nor-Lake Standard Chrome Kote™ Shelving.

B. Green Kote™ Shelving - Green epoxy coated shelves. 15 year guarantee against corrosion.

Shelving system construction is identical. Select the shelving FINISH of your choice.

Shelving posts are engineered for maximum strength. Shelves are adjustable on 2" centers. All shelves are N.S.F listed and are zinc coated with a heavy layer of Protoxy for a maximum life span under humid storage conditions. Special clips are utilized to gain the maximum square footage of storage space for each Mini-Room model. 14", 18" and 24" wide shelves are used as required for maximum storage capacity in each set. This wire shelving is ideal for scientific, laboratory and industrial applications.

SHELVES:

Shelves to have #9 (.148") gauge crosswires spaced 3/4" on centers with crossbraces 1/4" (.192") minimum of 4-3/4" on center.

Shelf Frames

Channel to be 9/16" x 1" x .075" thick.

Shelf Collars

A round tapered 1-5/16" high steel collar to be welded at each corner.

FINISHES

A. Chrome Kote™: Plated quality wire and steel. Surface nickel chrome plated.

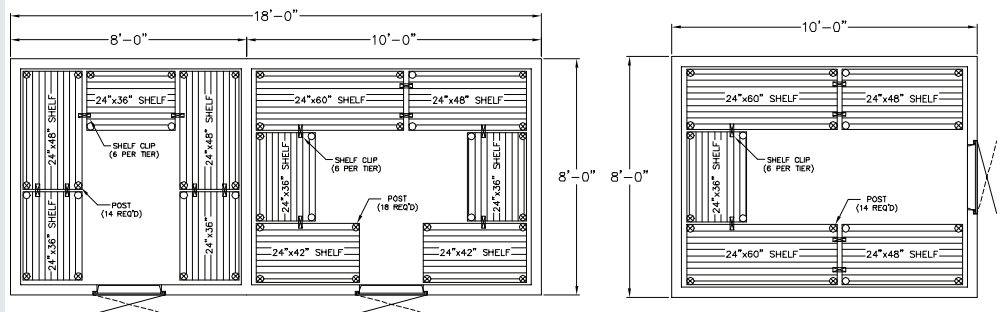
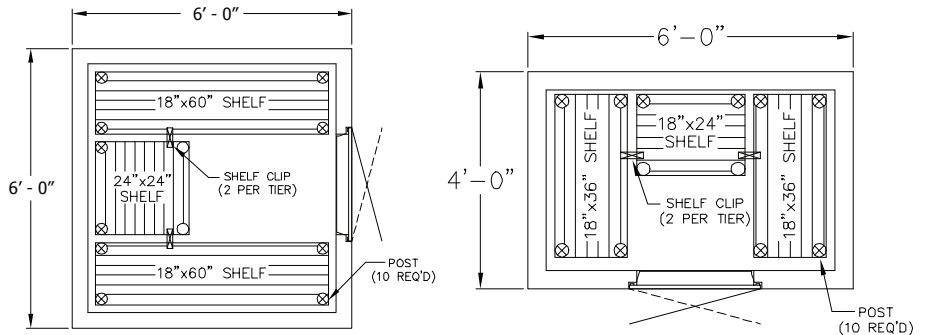
B. Green Kote™: Electrostatically applied green baked epoxy over zinc steel and brite basic wire. Thickness : 4-7 mill.

POSTS

Posts to be .062" thick 1" O.D. round tubing notched every 2" on each corner of the post.

POST LEVELERS

Installed on the bottom of each post is nylon housing for a steel leveler 3/8"-16 x 1-3/4".



Committed to our environment

NOR-LAKE, INCORPORATED
727 Second Street
Hudson, Wisconsin 54016
800-477-5253
715-386-2323
866-961-5253 PARTS
800-388-5253 SERVICE
715-386-4290 FAX
www.norlakescientific.com



©2014 NOR-LAKE, INC
Printed in U.S.A.
Part Number: 079360
Revision Date: 09/14