

# Mini-V 8•10

## Integrated System for PAGE and Blotting

### Mini-V 8•10 Gel Electrophoresis System

- Gel size 8.7 cm x 7.2 cm (W x L)
- Patented drop-in wedge automatically positions gels without the use of gaskets or clamps
- Blot Module for blotting in the electrophoresis tank
- Gel Casting System designed to cast 2 to 9 gels simultaneously (option)

The **Mini-V 8•10 Gel Electrophoresis System** is an integrated system for rapid, high-quality separation and blotting in a vertical minigel size format. Its two primary components, the Mini-V8•10 Gel Electrophoresis Apparatus and the Mini-V8•10 Blot Module, are supplemented by a complete selection of accessories.

Gels of different length and thickness can be electrophoresed using the **Mini-V 8•10 Gel Electrophoresis Apparatus**. Up to 20 samples can be separated by running 2 gels simultaneously. 2 sets of spacers with different thickness (0.75 and 1.5 mm) allow optimal adaptation of gel thickness for various applications.

As the Mini-V 8•10 offers no fixed spacers it is recommended to use the Mini-V 8•10 Gel Casting Clamp for simple, leak-free casting of gels.

This allows casting of gels in a fraction of the time of the „conventional“ tape or grease and binder clip methods. Most commercial available pre-cast 8 cm x 10 cm format PAGE gels can be used with the system. The 600 - 650 ml buffer volume ensures efficient cooling even at higher current.



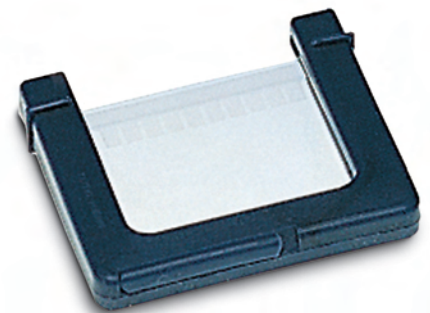
### Mini-V 8•10 Blot Module

The Mini-V 8•10 Blot Module operates in the electrophoresis tank of the Mini-V 8•10 for the transfer of proteins and nucleic acids on to membranes. Two gels can be blotted simultaneously.



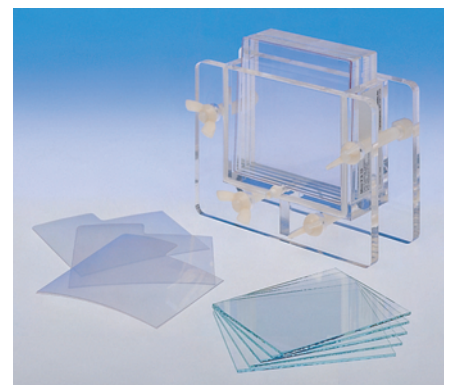
### Mini-V 8•10 Gel Casting Clamp

The Mini-V 8•10 Gel Casting Clamp is sold separately. The silicone clamp provides leak proof casting and is designed to cast a single 8.7 cm x 7.2 cm format gel.



### Mini-V 8•10 Gel Casting System

The casting chamber is designed for easy set-up and cleaning and allows to cast 2 to 9 gels simultaneously. A Gradient Former in combination with the luer fitting in the bottom of the casting chamber ensures casting of identical gradient gels. Special separation sheets make separation of gels after polymerisation very easy. Displacement blocks permit the casting of various numbers of gels.



## Model V15•17

### Gel Electrophoresis Apparatus for PAGE

#### Model V15•17

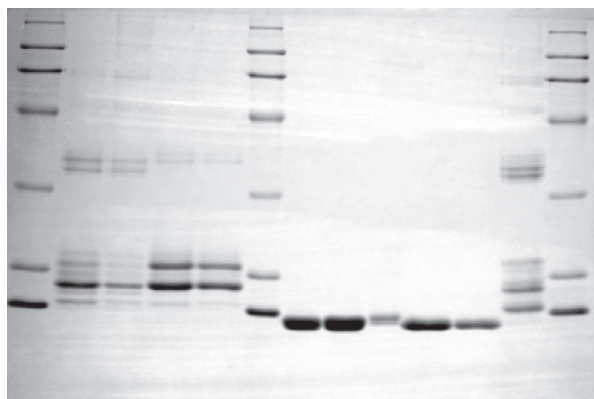
- Gel size 17 cm x 15 cm (W x L)
- Built-in integral clamps hold the gel in place
- Fits gels of different thicknesses with straight or notched glass plates

The Model V15•17 is designed to electrophorese a single 17 cm x 15 cm (W x L) vertical gel for separation of up to 20 samples on a 0.8 mm, 1.5 mm or 3 mm thick gel.

The built-in integral clamps allow easy assembly and hold gels of different thickness leak-free in place. The V15•17 is the system of choice for laboratories with low sample throughput but the need of long running distances or large sample volumes (up to 4,000  $\mu$ l).

#### Gel Casting Clamp

The Gel Casting Clamp is sold separately. The silicone clamp is designed to cast a single 17 cm x 15 cm gel and provides leak proof casting.



15 % SDS-polyacrylamide gel with discontinuous buffer system, electrophoresed at 80 V for 0.5 h, then at 120 V for 4.5 h.

# Mini-V 8•10

## Order Information

Item	Order No.
<b>Mini-V 8•10 Gel Electrophoresis Apparatus</b> , with buffer tank, safety lid, gel support tray, gel wedge block, 2 pairs of glass plates (2 short glass plates 7.25 cm x 10.25 cm and 2 long glass plates 8.25 cm x 10.25 cm), 2 sets of 0.75 mm thick side spacers and 2 x 10 well combs (0.75 mm thick) (Mini-V 8•10 Gel Casting Clamp is sold separately.)	21078043 (EU) 21078092 (USA)
<b>Mini-V 8•10 Gel Electrophoresis System</b> , system with Mini-V 8•10 Gel Electrophoresis Apparatus and Mini-V 8•10 Blot Module (Mini-V8•10 Gel Casting Clamp is sold separately.)	21078050 (EU) 21078118 (USA)
<b>Accessories and Spare Parts</b>	
<b>Mini-V 8•10 Gel Casting Clamp</b>	(1/pkg) 21078241
<b>Mini-V 8•10 Gel Casting Clamp</b>	(2/pkg) 21078233
<b>Mini-V 8•10 Casting Stand</b> (acrylic casting stand)	21078126
Glass Plates (mixed pairs, 8.25 cm x 10.25 cm/7.25 cm x 10.25 cm)	(10 pairs) 21078035
Gel Loading Template	(4/pkg) 21078076
Spring Clips	(12/pkg) 11098019
Stainless Steel Binder Clips	(12/pkg) 21105333
<b>Spacer Sets (side spacers):</b>	
0.75 mm	(2 pairs) 11958147
1.5 mm	(2 pairs) 11958154
<b>Combs, 0.75 mm thick</b>	
6 wells	(max. volume/well)* (40 µl) 11958089
10 wells	(20 µl) 11958113
<b>Combs, 1.5 mm thick</b>	
6 wells	(max. volume/well)* (80 µl) 11958097
10 wells	(40 µl) 11958121
preparative, with 2 marker lanes	(475 µl)*** 11958063
Platinum/Niobium Upper Electrode Replacement Kit Mini-V	11958162
Lower Electrode Replacement Kit Mini-V	11958261
Banana Plug Replacement Kit (includes 2 banana plugs, 1 red and 1 black cap nut and 2 lock washers)	11958469
Gel Loading Template	(4/pkg) 21078076
<b>Mini-V 8•10 Blot Module</b> , complete with blot restrainer, blot support frame, clamping knob and three transfer pressure pads	21078019
<b>Accessories</b>	
Transfer Pressure Pads	(6/pkg) 11958048



# Mini-V 8•10 and Model 15•17

## Order Information

Item	Order No.
<b>Mini-V 8•10 Gel Casting System</b> , complete with a casting chamber with threaded posts, one end plate with silicone gasket and fill port, displacement blocks (1 x 1 mm, 2 mm and 5 mm and 3 x 9 mm), 20 gel separation sheets, 10 pairs of glass plates, wing nuts and cap nuts, stopcock, tubing connector, and stopper (Combs and spacers are sold separately!)	21078027
<b>Accessories and Spare Parts</b>	
Luer Fitting Kit (includes 2 stopcocks, 2 stoppers, 2 tubing connectors and 1 Luer fill port)	11958014
<b>Model V15•17 Gel Electrophoresis Apparatus</b> , complete with buffer chamber, safety lid, 1 pair of glass plates (1 short glass plate 19.7 cm x 16.0 cm and 1 long glass plate 19.7 cm x 18.5 cm), 1 pair of 1.5 mm thick side spacers, 1 x 1.5 mm thick bottom spacer, and 1 x 20 well comb (1.5 mm thick) (The Gel Casting Clamp is sold separately.)	21080023 (EU) 21080015 (USA)
<b>Accessories and Spare Parts</b>	
<b>Gel Casting Clamp</b> (Model V15•17, V16, V16-2)	(1/pkg) 21070065
<b>Gel Casting Clamp</b> (Model V15•17, V16, V16-2)	(2/pkg) 21070073
Glass Plates (mixed pairs, 16.0 cm x 19.7 cm/18.5 cm x 19.7 cm)	(3 pairs) 11074010
Spring Clips	(12/pkg) 11098019
Stainless Steel Binder Clips	(12/pkg) 21105333
<b>Spacer Sets (complete with 1 bottom spacer, 2 side spacers and 2 foam blocks)</b>	
0.8 mm thick	41077017
1.5 mm thick	41077025
3.0 mm thick	41077033
<b>Combs, 0.8 mm thick</b> (max. volume/well)**	
10 wells	(94 µl) 11956026
12 wells	(72 µl) 11956034
14 wells	(59 µl) 11956042
20 wells	(34 µl) 21076013
preparative, with 2 marker lanes	(1,000 µl)*** 11956117
<b>Combs, 1.5 mm thick</b> (max. volume/well)**	
10 wells	(175 µl) 11956059
12 wells	(135 µl) 11956067
14 wells	(110 µl) 11956075
20 wells	(63 µl) 21076021
preparative, with 2 marker lanes	(2,000 µl)*** 11956125

\* Volume calculated for an insertion depth of 5 mm

\*\* Volume calculated for an insertion depth of 9 mm

\*\*\* Volume of the central preparative well



# Model 15•17

## Order Information

Item	(max. volume / well)**	Order No.
<b>Combs, 3.0 mm thick</b>		
10 wells	(350 µl)	11956083
12 wells	(270 µl)	11956091
14 well	(220 µl)	11956109
20 wells	(126 µl)	21076039
preparative, with 2 marker lanes	(4,000 µl)***	11956133
<b>Power Cords</b>	(1 pair)	11099025 (EU) 11099041 (USA)
Upper Platinum Wire Replacement		11958345
Lower Platinum Wire Replacement		11958329
Wire Hardware Replacement Kit (includes 1 red cap nut, 1 black cap nut, 2 O-rings, 2 rubber washers, 2 electrode boots and 2 hex nuts) Does not include the electrode!		11958212
Gasket Replacement for V15•17 (with 6 foam blocks)		21960059
Spacer Foam Blocks	(12/pkg)	21070057
Banana Plug Replacement Kit (includes everything in the Wire Hardware (11958212) Replacement Kit plus 2 banana plugs, 2 long ratchet rivets, 2 short ratchet rivets, 2 thin washers and 2 thick washers)		11958378
Gel Clamp Replacement Kit (includes spring, shoulder washer, tab, knob and support ring)		11958352
Clamping Support Upgrade Kit (includes 2 support rings and gasket)		11958451
Safety Lid Replacement Kit V15•17 (includes safety lid, 2 long ratchet rivets, 2 short ratchet rivets, 2 thin washers and 2 thick washers)		11958360
Plug Cover for Casting Clamp		21105465

\* Volume calculated for an insertion depth of 5 mm

\*\* Volume calculated for an insertion depth of 9 mm

\*\*\* Volume of the central preparative well

