

# Large Volume Centrifuges

■ Z496-K Floor-Standing

■ Z496-K-UC Underbench



**HERMLE**  
**Benchmark** 

## The Perfect Fit



### Easy Handling:

- The ergonomic control panel is very user-friendly
- No need to remove gloves during operation
- Strictly a HERMLE application, you can store up to 99 different programs.
- Both versions are equipped with wheels, to easily maneuver around the laboratory, to the most convenient location. There is also a mechanism to place them on the feet as well
- Make yourself comfortable; operate this model from your laptop or computer. Our multi-functional software, "H-Control", allows you to control the centrifuge independently and save your protocols, (this function has to be ordered separately).
- An optional alarm will sound when your run is finished

### Safety:

- The Z496-K has an automatic imbalance shut off system.
- There is over speed protection incorporated for each rotor.
- The centrifuge will not start until the lid is locked.
- Error code system to quickly detect issues
- Stable and firm design, made of steel, ensures excellent mechanical reliability and protection.

### Efficient and Versatile:

- Due to the wide range of bucket and rotor options, the Z496 can hold all common tubes and bottles, up to 1,000 ml.
- "Pre-cooling" function specific to each rotor for maximum efficiency
- Keep dangerous and hazardous aerosols locked; hermetically sealed buckets available
- Save space in your laboratory. The Underbench model is easily placed below a standard laboratory table.
- The Floor-Standing mode; is supplied with a storage drawer which is very useful for your accessories.

4 x 1,000 ml

# Z496-K



**Underbench  
Centrifuge**



**Floor-Standing  
Centrifuge**

## Features:

- Maintenance-free induction drive
- Microprocessor with large LCD display
- Motor driven lid lock
- Automatic radio-frequency rotor identification system (RFID) with over speed protection, immediately upon rotor insertion
- Active imbalance identification and cut-off (rotor-specific)
- CFC-free refrigeration system
- Wide range of rotors and accessories
- Audible signal at the end of each run, with several melody options
- Stainless steel chamber
- Manufactured in accordance to International Safety Regulations, i.e. IEC 61010

The Z496-K centrifuges offer the highest tube/bottle capacity in our range. Several rotors are available, including a popular 4 position swinging bucket rotor with a wide offering of accessories for the centrifugation of tubes, bottles, plates and blood bags. The high capacity rectangular buckets accept microplates directly or a variety of tube inserts for accommodating as many as 40 x 50ml conical or 96 x 15ml conical tubes per run. A standard floor standing model is available (height: 38.6 in.) which includes a convenient lower drawer for the storage of frequently used rotors and accessories. In addition, a space saving "underbench" model (height: 27.5 in.) is available when under the counter storage is preferred. Both models are equipped with wheels for easy maneuverability around the laboratory. For all your high capacity, high volume needs, the Z496-K floor standing series is the perfect centrifuge.

## Technical Data

Max. Speed:	10,500 rpm
Max. RCF:	16,022 xg
Max. Volume:	4 x 1,000 ml
Speed range:	200 - 10,500 rpm
Running time:	59 min 50 sec / 10 s increments 99 h 59 min / 1 min increments

## Dimensions (W x H x D):

Underbench Unit:	24.4 in x 27.5 in x 27 in 62 cm x 70 cm x 69 cm
Floor-Standing Unit:	24.4 in x 38.5 in x 27 in 62 cm x 98 cm x 69 cm

## Weight:

Underbench Unit:	346 lbs / 157 kg
Floor-Standing Unit:	419 lbs / 190 kg

Power input: 2.3 KW

## Ordering Information

Underbench: Z496-K-UC, 230 V / 50 - 60Hz  
Floor-Standing: Z496-K, 230 V / 50 - 60 Hz  
Interface incl. operating software: Z496-HCTRL



## Distinct Control Panel

- Simple one-handed operation
- Easy to program with gloves on
- Splash-proof
- Permanent indication of pre-set and actual values
- Selection of speed in both rpm and g-force, in increments of 10
- 10 acceleration and deceleration rates, possibility of unbraked deceleration
- Temperature range from -20°C to 40°C, in increments of 1°C
- Pre-cooling program
- Standstill cooling
- Pre-selection of the running time from 10 s to 99 h 59 min or continuous
- Storage of up to 99 runs, including rotor
- Quick-key for short runs
- Timer: the centrifuge starts at the preselected time

# Accessories Z496-K

## Rotor/Bucket

Order No.:  
Z496-1000-AC\*  
4 x 1000ml Swing out rotor  
Angle: 0-90°



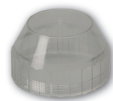
\*Z496-1000  
Swing out rotor with  
rectangular buckets included

## Adapter

Order No.:  
Z496-1000-1L  
Round bucket



Acceleration in s: 84/328  
Deceleration in s: 50/1,067  
Max. Speed: 4,600 rpm  
Max. RCF: 5,203 xg  
Max. Radius: 22 cm  
Temp. at Max. Speed: 9°C

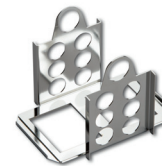


Z446-750-LID  
PC-Screw cap hermetical  
sealable, for round bucket  
Z496-1000-1L

Order No.:  
Z496-1000-RBUK  
Rectangular bucket/Microplate bucket



Acceleration in s: 84/302  
Deceleration in s: 53/1,178  
Max. Speed: 4,200 rpm  
Max. RCF: 3,964 xg  
Max. Radius: 20.1 cm  
Max. Loading Height: 92 mm  
Max. Loading Weight: 1,200 g  
Temp. at Max. Speed: 4°C



Z496-1000-MPRA  
Removing aid for  
microplates

## Adapters for Rectangular Bucket

Volume	Corning®				Falcon®							
	750 ml	650 ml	500 ml**	500 ml	250/290 ml	175/225 ml**	100 ml	50 ml	50 ml	15 ml	5 ml	
<b>Rectangular Bucket</b> Order No.: Z496-1000-RBUK	99	99	97	99	62	61	40	29	29	17	17	
ø in mm												
Length min./max. (mm)	152	136	148	114	122/137	118/137	102/123	90/120	116	120	60/70	
Tubes per Rotor	4	4	4	4	8	8	12	40	40	96	96	
Radius Correction (cm)	0.5	0.5	0.5	0.5	0.4	0.5	0.5	0.1	0.1	0.1	0.1	
Order No. Z496-1000_	-A750	-A750	-A500C <sup>1</sup>	-A500	-A250	-A225	-A100	-A50R	-A50	-A15	-A5F	
<sup>1</sup> Only applicable with combination of Z496-1000-A500C + Z446-750-A500												
Vacutainer®/Sarstedt®												
Volume	5.5-12 ml		2.6-8 ml									
ø in mm	16		13									
Length min./max. (mm)	60/120		65/100									
Tubes per Rotor	152		192									
Radius Correction (cm)	0.1		0.1									
Order No. Adapter	-A10		-A57									
					** Bottles available for order							
					Volume		175 / 225 ml	500 ml				
					Part No. :		C0175 / C0225	C1500				

## Adapters for Round Bucket

Volume	Corning®				Corning®				Falcon®			
	1000 ml	750 ml	650 ml	500 ml**	500 ml	250 ml**	250/290 ml	175/225 ml**	50 ml	50 ml	30 ml	
<b>Round Bucket</b> Order No.: Z496-1000-1L	99	99	99	97	99	69.5	60	62	61	29	29	25
ø in mm												
Length min./max. (mm)	173/178	152	136	148	114	165	159	122/137	118/137	102/123	116	102/123
Tubes per Rotor	4	4	4	4	4	4	4	4	4	28	20	32
Radius Correction (cm)	0	0	0	0.5	0	0.5	0.4	0.5	0.2	0.1	0.1	0.1
Order No. Z496-1L_	without	without	without	*-A500	without	-A500S	-A250F	*-A250	*-A225	*-A50R	*-A50-E	*-A30
Vacutainer®												
Volume	12/15 ml	15 ml	6-10 ml	1.8-7 ml								
ø in mm	17	17	16	13								
Length min./max. (mm)	97/120	120	75/100	75/100								
Tubes per Rotor	72	48	72	108								
Radius Correction (cm)	0.1	0.1	0.3	0.3								
Order No. Adapter	*-A15R	-A15	*-A10	*-A57								
					** Bottles available for order							
					Volume		175 / 225 ml	250 ml	500 ml			
					Part No. :		C0175 / C0225	C1250	C1500			
*use Z446-750 as prefix												

# Accessories Z496-K

## Rotor/Bucket

Order No.: Z496-1000-AC  
4 x 1000ml Swing out rotor  
Angle: 0-90°



## Adapter

Order No.: Z496-500-BLD  
Blood bag bucket for 500 ml



Acceleration in s: 62/328  
Deceleration in s: 48/981  
Max. Speed: 4,600 rpm  
Max. RCF: 5,298 xg  
Max. Radius: 22.4 cm  
Temp. at Max. Speed: 7°C

Order No.: Z496-750-BLD  
Blood bag bucket for 750 ml



Acceleration in s: 82/324  
Deceleration in s: 50/1,111  
Max. Speed: 4,600 rpm  
Max. RCF: 5,274 xg  
Max. Radius: 22.3 cm  
Temp. at Max. Speed: 9°C



Z496-500-ADP  
Adapter for bucket  
Z496-500-ADP



Z496-750-ADP  
Adapter for bucket  
Z496-750-ADP

Order No.:  
Z446-04500



Angle rotor 4 x 500 ml  
Angle: 24°

Acceleration in s: 73/575  
Deceleration in s: 84/2,317  
max. speed: 8,000 rpm  
max. RCF: 10,367 xg  
max. radius: 14.5 cm  
max.  $\phi$ : 69.5 mm  
Temp. at max. speed: 4°C

Order No.:  
without Adapter  
Z466-500-A250F  
Z446-500-A250  
Z446-500-A225  
Z446-500-A225  
Z446-500-A50  
Z446-500-A15C

Tube rack	$\phi$ (mm)	Length (min./max.)
1 x 500 ml	69.5	165
1 x 250 ml	62	122
1 x 250 ml conical**	60	159
1 x 175 ml conical**	61	118
1 x 225 ml conical**	61	137
1 x 50 ml conical	29	116
6 x 15 ml conical	17	120

\*\* Bottles available for order

Volume	Part No.:
175 / 225 ml	C0175 / C0225
250 ml	C1250

Order No.:  
Z366-06250



Angle rotor 6 x 250 ml  
Angle: 28°

Acceleration in s: 66/573  
Deceleration in s: 84/1,871  
max. speed: 8,000 rpm  
max. RCF: 10,016 xg  
max. radius: 14 cm  
max.  $\phi$ : 62 mm  
Temp. at max. speed: -1°C

Order No.:  
without Adapter  
Z366-06250-A225C  
Z366-06250-A50  
Z366-06250-A50R  
Z366-06250-A30  
Z366-06250-A15

Tube rack	$\phi$ (mm)	Length (min./max.)
1 x 250 ml	62	122
1 x 175/225 ml conical**	61	118/137
1 x 50 ml conical	29	118
1 x 50 ml	29	103
2 x 30 ml	26	92
4 x 15 ml conical	17	120

\*\* Bottles available for order

Volume	Part No.:
175 / 225 ml	C0175 / C0225

Order No.:  
Z326-1050



Angle rotor 10 x 50 ml conical  
Angle: 38°

Acceleraton in s: 53/441  
Deceleration in s: 71/1,411  
Max. Speed: 10,500 rpm  
Max. RCF: 16,022 xg  
Max. Radius: 13.0 cm  
Max.  $\phi$ : 29 mm  
Temp. at max. speed: -1°C

Order No.:  
Z326-50-B15HS  
Z326-15-A7\*  
Z326-15-A5\*  
Z326-15-A20\*  
Z326-50-A15

Adapter	$\phi$ (mm)	Length (min./max.)
1 x 15 ml RB	17	97/123
1 x 7 ml	13.5	95/115
1 x 5 ml	13.5	70/90
1 x 1.5/2.0ml	11	44
1 x 15 ml conical	17	120

\*only possible with adapter Z326-50-A15 or Z326-50-B15

## Z496-K Floor-Standing Model

The Floor-Standing Model, features a storage drawer for easy access to your accessories.



www.HermleUSA.com  
PH: 908-769-5555  
EM: info@benchmarkscientific.com

