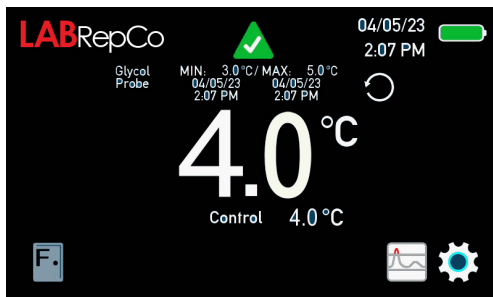




IntelVU™ Information Hub



Application & Basic Data

| | |
|------------------------------|---|
| Application | Hospital Pharmacy, Retail Pharmacy, Speciality Pharmacy, Patient Care, Life Sciences |
| Storage Volume | 623 L (22 cu ft) |
| Temperature Range | 2-8°C |
| Set-Point | 5°C |
| Electrical Power | 115 V |
| Maximum Current | 5.83 |
| Facility Supply Rating | Branch circuit with earth ground, compliant with plug ratings and local electrical codes. 110-120V AC: 15 A (minimum) |
| Power Plug/Power Cord Length | NEMA 5-15P, Hospital Grade/9.5 ft |
| Certifications | ETL |
| Application Environment | Non-hazardous |
| Ambient Temperature & R.H. | 80°F / 27°C / 55% R.H. |

Refrigeration System

| | |
|----------------------|--|
| Refrigeration System | Forced-air, Monoblock Condensing Unit |
| Compressor | Variable Speed, 2,000 to 4,500 RPM |
| Condenser Type | Finned Condenser |
| Expansion Device | TXV Valve for dynamic refrigerant modulation |
| Evaporator Type | Electrostatic Coated Finned Evaporator |
| Defrost Method | Automatic |
| Refrigerant | R290 |

Performance Information

| | |
|--|----------------|
| Uniformity °C | (+/-) 1.0 |
| Recovery to 5°C after 1 min door opening min | 9 |
| Stability °C | 0.70 |
| Energy consumption kWh/day | 2.49 |
| Noise emission dB | 47 |
| Pull-down time to 5°C min | 19 |
| Peak Variation from Set Point | + 0.27 / -1.12 |

Technical Data Sheet

High-Performance Pharmacy/Lab Glass Door Refrigerator

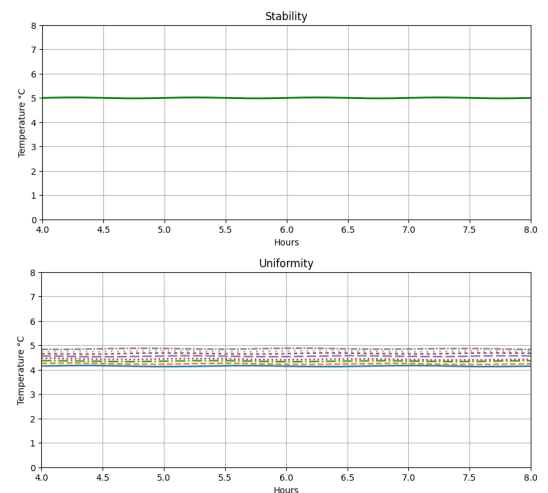
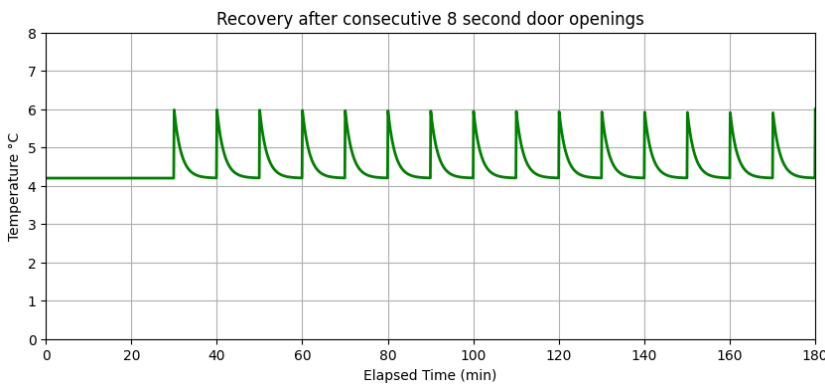
Model: LM-22-HG-PH (drawers) | LM-22-HG (shelves)

Controller / Configuration Settings

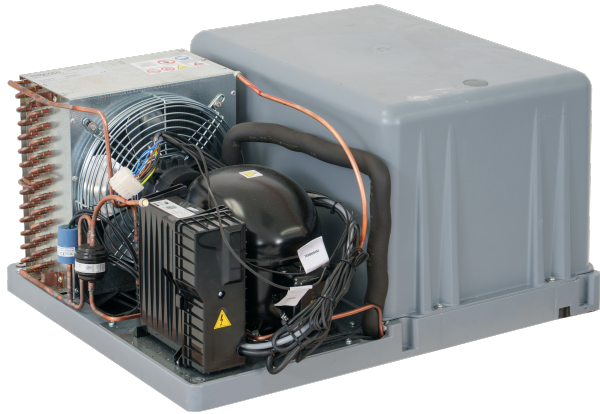
| | |
|-------------------------------|---|
| User Interface | IntelVU™ 7 inch full color touch screen |
| Power Switch | On/Off |
| Controller Type | Custom Machine Microprocessor |
| Security | 1. Door Lock with Key 2. Optional Electronic Access with Pin Code |
| Control Sensor | Negative Temperature Coefficient Probe (NTC), Stainless Steel |
| Communication Port | Remote alarm dry contacts |
| Power Failure Alarm | Yes |
| High/Low Alarm | Yes |
| Door Ajar Alarm | Yes |
| Min/Max Temperature | Yes |
| Download | USB in CSVFormat |
| Chart Recorder | Optional |
| Event Log | Yes |
| Temperature Log | 1. Default interval for data logging is 5 minutes and is adjustable 2. Stores up to 2 years of temperature data (50,000 data points) |
| Access Log | Yes, with optional electronic locks download via USB |
| Interactive Temperature Graph | Yes |
| Product Simulator | Yes, Solid Ballast |
| Battery Backup | Yes |

Dimensions and Construction

| | |
|-------------------------------|--|
| Exterior (w x d x h inches) | 26.75 x 33.4375 x 79.09 |
| Interior (w x d x h inches) | 23.25 x 26.4687 x 57.875 |
| Insulation | CFC-free Eco Polyurethane Insulation |
| Exterior Finish | Powder Coated Steel Door & Motor Cover 304 Stainless Steel Ends |
| Interior Finish | White Aluminum Walls, 304 Stainless Steel Floor |
| Casters | 3" 2 Locking, 2 Non-locking |
| Doors | (1) Triple Pane Glass!! |
| Access Port | 2 3/8" Diameter |
| Drawer or Shelf Configuration | 9 standard |
| LED Lights | 120 second time out, adjustable |
| Integrated Access Control | Optional - electronic-lock with PIN entry via IntelVU™ UI |
| Net Weight (lbs) | 390 |
| Shipping Weight (lbs) | 447 |
| Clearance Requirements | Minimum of 8" above top and 3" behind back and along sides of unit for proper ventilation |
| Options Accessories | Integrated access control, stainless steel interior, chart recorder, remote alarms, floor and wall bracket kit, floor anchoring kit, storage trays, tray dividers, wire shelves, USB drive for downloading, left-hinge door, certificate of calibration, temperature validation, validation guide (IQ/OQ), extended warranty |
| Warranty | 7 years compressor, 3 years parts & labor |



Technical Data Sheet
High-Performance Pharmacy/Lab Glass Door Refrigerator
Model: LM-22-HG-PH (drawers) | LM-22-HG (shelves)



Highlighted Features

- **Monoblock condensing unit** delivering 3 cu. ft. of increased interior capacity and rapid serviceability. The entire refrigeration system can be replaced in under one hour, minimizing downtime.
- **Adaptive-Drive variable-speed compressor** provides up to 30% energy savings with exceptionally quiet operation.
- **Easy-access condensing coil** designed for **quick cleaning and simplified maintenance.**

Dimensional Drawings

EXTERIOR SPECS:
79.09375" HEIGHT
33.4375" DEPTH
26.75" WIDTH



LM-22-HG Shelves

