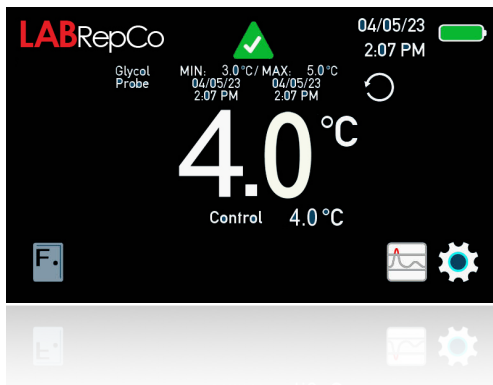




IntelVU™ Information Hub



Application & Basic Data

Application	Hospital Pharmacy, Retail Pharmacy, Speciality Pharmacy, Patient Care, Life Sciences
Storage Volume	623 L (22 cu ft)
Temperature Range	2-8°C
Set-Point	5°C
Electrical Power	115 V
Maximum Current	5.83
Facility Supply Rating	Branch circuit with earth ground, compliant with plug ratings and local electrical codes. 110-120V AC: 15 A (minimum)
Power Plug/Power Cord Length	NEMA 5-15P, Hospital Grade/9.5 ft
Certifications	ETL
Application Environment	Non-hazardous
Ambient Temperature & R.H.	80°F / 27°C / 55% R.H.

Refrigeration System

Refrigeration System	Forced-air, Monoblock Condensing Unit
Compressor	Variable Speed, 2,000 to 4,500 RPM
Condenser Type	Finned Condenser
Expansion Device	TXV Valve for dynamic refrigerant modulation
Evaporator Type	Electrostatic Coated Finned Evaporator
Defrost Method	Automatic
Refrigerant	R290

Performance Information

Uniformity °C	(+/-) 1.0
Recovery to 5°C after 1 min door opening min	9
Stability °C	0.70
Energy consumption kWh/day	2.49
Noise emission dB	47
Pull-down time to 5°C min	19
Peak Variation from Set Point	+ 0.27 / -1.12

Technical Data Sheet

High-Performance Pharmacy/Lab Solid Door Refrigerator

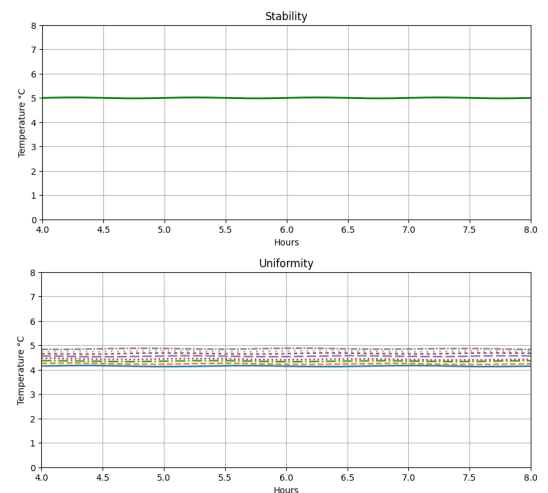
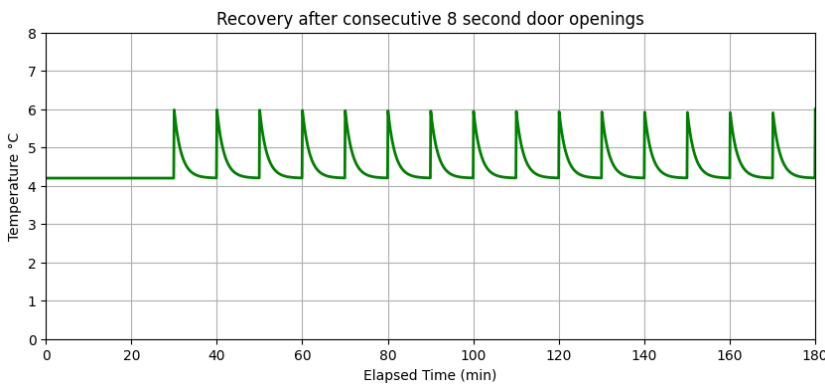
Model: LM-22-SD-PH (drawers) | LM-22-SD (shelves)

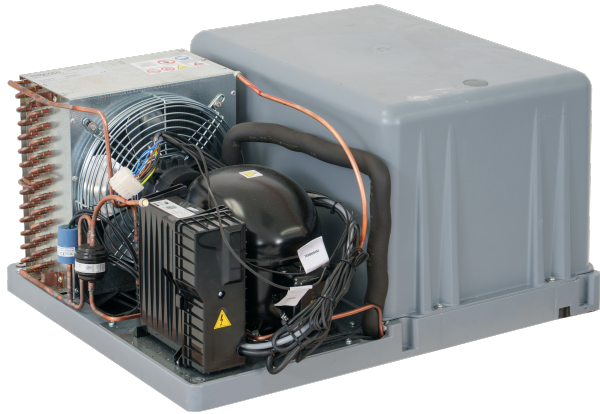
Controller / Configuration Settings

User Interface	IntelVU™ 7 inch full color touch screen
Power Switch	On/Off
Controller Type	Custom Machine Microprocessor
Security	1. Door Lock with Key 2. Optional Electronic Access with Pin Code
Control Sensor	Negative Temperature Coefficient Probe (NTC), Stainless Steel
Communication Port	Remote alarm dry contacts
Power Failure Alarm	Yes
High/Low Alarm	Yes
Door Ajar Alarm	Yes
Min/Max Temperature	Yes
Download	USB in CSVFormat
Chart Recorder	Optional
Event Log	Yes
Temperature Log	1. Default interval for data logging is 5 minutes and is adjustable 2. Stores up to 2 years of temperature data (50,000 data points)
Access Log	Yes, with optional electronic locks download via USB
Interactive Temperature Graph	Yes
Product Simulator	Yes, Solid Ballast
Battery Backup	Yes

Dimensions and Construction

Exterior (w x d x h inches)	26.75 x 33.4375 x 79.09
Interior (w x d x h inches)	23.25 x 26.4687 x 57.875
Insulation	CFC-free Eco Polyurethane Insulation
Exterior Finish	Powder Coated Steel Door & Motor Cover 304 Stainless Steel Ends
Interior Finish	White Aluminum Walls, 304 Stainless Steel Floor
Casters	3" 2 Locking, 2 Non-locking
Doors	(1) Solid (Triple Pane Glass model available)
Access Port	2 3/8" Diameter
Drawer or Shelf Configuration	9 standard
LED Lights	120 second time out, adjustable
Integrated Access Control	Optional - electronic-lock with PIN entry via IntelVU™ UI
Net Weight (lbs)	390
Shipping Weight (lbs)	447
Clearance Requirements	Minimum of 8" above top and 3" behind back and along sides of unit for proper ventilation
Options Accessories	Integrated access control, stainless steel interior, chart recorder, remote alarms, floor and wall bracket kit, floor anchoring kit, storage trays, tray dividers, wire shelves, USB drive for downloading, left-hinge door, certificate of calibration, temperature validation, validation guide (IQ/OQ), extended warranty
Warranty	7 years compressor, 3 years parts & labor





Highlighted Features

- **Monoblock condensing unit** delivering 3 cu. ft. of increased interior capacity and rapid serviceability. The entire refrigeration system can be replaced in under one hour, minimizing downtime.
- **Adaptive-Drive variable-speed compressor** provides up to 30% energy savings with exceptionally quiet operation.
- **Easy-access condensing coil** designed for **quick cleaning and simplified maintenance.**

EXTERIOR SPECS:
79.09375" HEIGHT
33.4375" DEPTH
26.75" WIDTH

Dimensional Drawings



LM-22-SD Shelves

