

# {38.10}



## nimbl® Compact Medical Carts and Accessories

### Everywhere you go, so goes nimbl.

The nimbl® Cart is thoughtfully engineered with a small footprint and a lightweight, open-concept design, making it exceptionally easy to move and position wherever it's needed. Its storage capacity is carefully balanced, providing ample space to keep essential items organized and accessible, without overwhelming users with excess compartments or limiting storage to the point of inconvenience. To further support diverse workflows, the Nimbl Cart offers a wide range of accessories, ensuring it can be tailored to meet the unique needs of any setting.

- **Modern Aesthetic-** Sleek modern design with neutral color scheme and choice of accent colors provides a professional appearance that will blend with any interior design.
- **Compact Design-** A modest worksurface, ample storage, and vast accessory offering all in a small footprint provides everything needed on-the-go.
- **Easy Mobility-** The smaller, lighter, compact design, coupled with 5" (127 mm) casters, makes the cart easier to move, reposition, and use everywhere it is needed.
- **Ergonomic Worksurface-** Set at an ergonomic standing height, the spacious work surface features a smooth writing/prep area with a raised perimeter and integrated rear utility trays positioned conveniently within easy reach, and push handle conveniently located at the front for easy grab-and-go.
- **Identifiable-** Five colors options for drawer pulls and vertical accent strips provides the ability to differentiate carts by application or function.



**NB38**  
38" Height  
Basic Model



**NB50-12D21P-SB**  
50"H Drawer Model  
(Shown with top rail and bins)

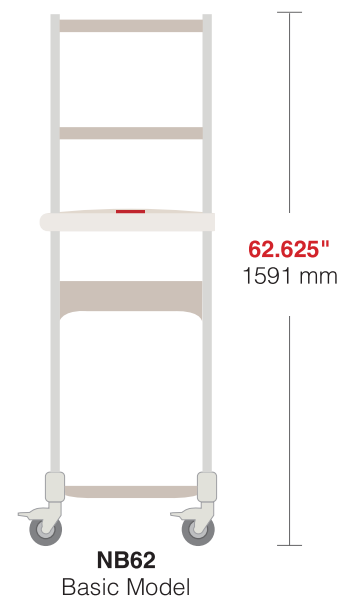
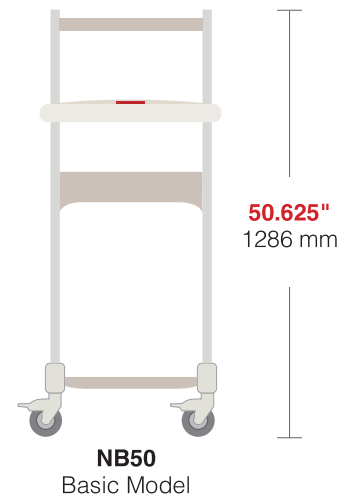
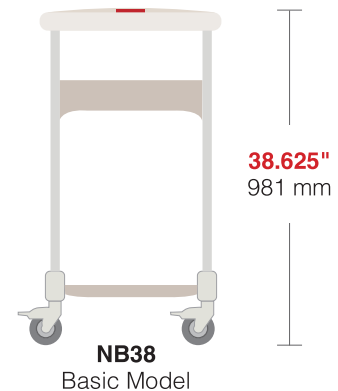


**NB62**  
62" Height Basic Model  
(Shown with upper and lower shelves)

All Metro Catalog Sheets are available on our website: [www.metro.com](http://www.metro.com)

## Specifications

- **Cart Frame-** Rigid aluminum uprights, hybrid metal/polymer base, and epoxy coated metal cross-channels provide a sturdy framework to support the mobility and various storage options provided by Nimbl®.
- **Base-** Polymer caster runners and baked-on epoxy-coated cold-rolled steel (CRS) cross bars and dust cover.
- **Uprights-** Extruded clear anodized aluminum uprights with built-in channel for accessory attachment and color accent strip. Uprights are available in three heights to provide options for storage above the worksurface.
- **Casters-** Four 5" (127mm) diameter total-lock casters with polyurethane tread and polymer horn. Casters are maintenance-free, medical-grade, and designed for smooth, quiet rolling.
- **Lower Rail-** Baked-on epoxy-coated CRS rail provides structural support for the cart frame and is included on all carts without a drawer module or shelf. The rail doubles as an accessory rail for hanging bins or baskets.
- **Pushbutton Lock -** 5-button mechanical pushbutton lock provides battery-free key-less security using a programmable sequence of five pushbuttons to control access.
- **Lower Accessories-** In addition or in place of to the accessory rail or drawer module, additional optional accessories below the worksurface include an epoxy-coated full-size shelf or lockable tote box assembly.
- **Drawer Modules-** Epoxy-coated CRS keylock drawer module provides the structural support for the cart frame. It is available in six different heights to accommodate various combinations of drawers. Pushbutton mechanical lock is an optional upgrade.
- **Drawers-** Drawers are epoxy-coated CRS and available in two heights, 3"H (25mm) and 6"H (152mm). Drawers include polymer drawer pulls in choice of five colors and can be equipped with optional drawer dividers.
- **Upright Accessories-** The uprights offers external accessory via its accessory channel along the entire height of the upright. Accessory rail, shelf and/or tablet arm can be mounted between the uprights that extend above the worksurface. Rails and shelves are epoxy-coated CRS. Accessory rail can be equipped with a variety of accessories like bins, trays, label/tape dispensers and more. External rail accessories can be equipped with bins, wastebaskets, containers, sanitizer holders, and more.



## Part Number Breakdown

# NB62-9D11P-RD

<b>NB</b>	<b>62</b>	<b>- 9D</b>	<b>1</b>	<b>1</b>	<b>P</b>	<b>- RD</b>
Product Line (Nimbl)	Overall Height <b>38"</b> <b>50"</b> <b>62"</b>	Drawer Module Height <b>3D</b> <b>6D</b> <b>9D</b> <b>12D</b> <b>18D</b> <b>24D</b>	# of 3" Drawers <b>0</b> <b>1</b> <b>2</b> <b>3</b> <b>4</b> <b>6</b> <b>8</b>	# of 6" Drawers <b>0</b> <b>1</b> <b>2</b> <b>3</b> <b>4</b>	Lock Style <b>x- Keylock</b> <b>P - Pushbutton</b>	Drawer Pull/ Accent Color <b>BK- Black</b> <b>RD - Red</b> <b>SB- Blue</b> <b>TP- Taupe</b> <b>YL- Yellow</b>

### Cart Frames

Includes upright, worksurface, casters, and bin rail.

Width x Length x Height (In.)		Width x Length x Height (mm)		Total-Lock Casters	Configuration Reference #
20.12 x 20.29 x 38.62	511 x 515 x 981	20.12 x 20.29 x 38.62	511 x 515 x 981	4	<b>NB38</b>
20.12 x 20.29 x 50.62	511 x 515 x 1286	20.12 x 20.29 x 50.62	511 x 515 x 1286	4	<b>NB50</b>
20.12 x 20.29 x 62.62	511 x 515 x 1591	20.12 x 20.29 x 62.62	511 x 515 x 1591	4	<b>NB62</b>

\*Note: Configuration reference # is for reference to item number with this prefix. It is not an item that can be quoted or ordered.



**NB38**  
38" (999mm) Basic Cart Frame  
(Includes Bin Rail shown.)

### Drawer Module

All drawer modules include a keylock. If "P" follows drawer reference (i.e. 12D21P), the lock mechanism is a pushbutton lock with key backup. Drawer module takes the place of the bin rail.

Width x Length x Height (In.)		Width x Length x Height (mm)		Key Lock	Pushbutton Lock	Configuration Reference #
14.91 x 17.03 x 6	379 x 433 x 152	14.91 x 17.03 x 6	379 x 433 x 152	Yes	P	<b>3D</b>
14.91 x 17.03 x 9.25	379 x 433 x 235	14.91 x 17.03 x 9.25	379 x 433 x 235	Yes	P	<b>6D</b>
14.91 x 17.03 x 12.5	379 x 433 x 318	14.91 x 17.03 x 12.5	379 x 433 x 318	Yes	P	<b>9D</b>
14.91 x 17.03 x 15.75	379 x 433 x 400	14.91 x 17.03 x 15.75	379 x 433 x 400	Yes	P	<b>12D</b>
14.91 x 17.03 x 22.25	379 x 433 x 565	14.91 x 17.03 x 22.25	379 x 433 x 565	Yes	P	<b>18D</b>
14.91 x 17.03 x 28.75	379 x 433 x 730	14.91 x 17.03 x 28.75	379 x 433 x 730	Yes	P	<b>24D</b>

\*Note: Configuration reference # is for reference to an item number with this code in the item number. It is not an item that can be quoted or ordered.



**12D11P**  
Drawer Module



Key Lock



Pushbutton Lock

### Drawers

Drawers are full extension and include a pair of soft-close ball bearing drawer slides.

Width x Length x Height - Interior (In.)		Width x Length x Height - Interior (mm)		Weight Capacity		Configuration Reference #
13.25 x 13.75 x 3	337 x 349 x 76	13.25 x 13.75 x 3	337 x 349 x 76	20	6.75	<b>3" Drawer</b>
13.25 x 13.75 x 6	337 x 349 x 152	13.25 x 13.75 x 6	337 x 349 x 152	25	11.25	<b>6" Drawer</b>

\*Note: Nominal Drawer Ht. is for reference to the drawer code found in an item number. It is not an item that can be quoted or ordered.

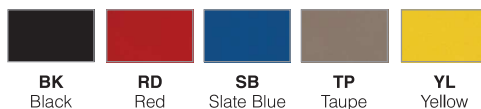


3" (76mm)  
Deep Drawer



6" (152mm)  
Deep Drawer

### Drawer Pulls



## Nimbl Preconfigured Carts

Carts shown on the previous pages are configured with the components and accessories listed here.

Cat. No.	Description	NB50-PHL1 Phlebotomy Cart 1	NB50-PHL2 Phlebotomy Cart 2	NB62-ISO1 Isolation Cart	NB50-WOCN1 Wound Care Cart	NB50-NURSE1 Nurse Server Cart	NB38-WS1 Workstation Cart	NB38-DIA1 Dialysis Cart	NB50-ENDO1 Endoscopy Cart 1	NB62-ENDO2 Endoscopy Cart 2	NB50-PICC Central Line Cart	NB50-ED1 Emergency Cart	NB50-ICU Intensive Care Cart	NB38-PACU1 Post Anesthesia Cart	NB38-BAS1 38" General Use Cart	NB50-BAS1 50" General Use Cart	NB62-BAS 62" General Use Cart
NB50-6D20-RD	50" H Cart	x															
NB50-12D21P-RD	50" H Cart		x														
NB62-18D03-YL	62" H Cart			x													
NB50-12D21-RD	50" H Cart				x												
NB50-12D21-SB	50" H Cart					x											
NB38-3D10-SB	38" H Cart						x						x				
NB38-6D20-TP	38" H Cart							x									
NB50	50" H Cart								x								
NB62	62" H Cart									x							
NB50-9D11-SB	50" H Cart										x						
NB50-24D-23-RD	50" H Cart											x					
NB38-9D11-TP	38" H Cart													x			
NB38-3D10-TP	38" H Cart														x		
NB50-3D10-TP	50" H Cart															x	
NB62-3D10-TP	62" H Cart																x
<b>Below Work Surface</b>																	
<b>Drawer Module</b>		6D	12D	18D	12D	12D	3D	6D	N/A	N/A	9D	24D	12D	9D	3D	3D	3D
<b>Keylock</b>		x		x	x	x	x	x			x	x	x	x	x	x	x
<b>Pushbutton Lock</b>			x														
<b>3"H (76mm) Drawer</b>		2	2		2	2	1	2			1	2	2	1	1	1	1
<b>6"H (152mm) Drawer</b>			1	3	1	1					1	3	1	1			
<b>Pull Color</b>		RD	RD	YL	RD	SB	SB	TP			SB	RD	SB	TP	TP	TP	TP
<b>Above Work Surface</b>																	
<b>Shelf</b>				1					1	1						1	1
<b>Accessory Rail</b>		1	2	1	1	1					1	1	1				1
<b>Accessories</b>																	
NB603	3" (76mm) Tote	1															
NB237	Triple Glove Box	1															
NB251	NB251 Lockable Sharps Container	1			1			1			1			1			
NB240	Sanitation Pump Holder	1	1			1											
NB586	Utility Bin	4	2		4	4					4	4	2				
NB216	Side Bin		2		1						1	1					
NB503	Rail		1								1	1	1				1
NB581	Half Size Bin		1										1				
NB583	Tape Dispenser		1														
NB221	Waste Basket			1		1		1			1			1			
NB504	Top Shelf			1					1							1	1
NB315	2 Hook IV Pole				1	1		1				1	1				
NB589	Equipment Shelf								3	3							
NB311	Tablet Holder									1							
NB241	Wipes Holder										1	1					
NB581	Half Size Bin																

To configure a Nimbl cart to your exact specifications, please visit [www.metroconfigurator.com](http://www.metroconfigurator.com)  
 Nimbl carts are built to exact customer specifications, therefore, they are non-cancellable, non-returnable.

# General Use Carts



Package includes carts, accessories and colored drawer pulls as shown.



38" General Use Cart  
Cat. No. **NB38**



50" General Use Cart  
Cat. No. **NB50-BAS1**



62" General Use Cart  
Cat. No. **NB62-BAS1**



38" General Use Cart  
Cat. No. **NB38-BAS1**



Equipment Cart  
Cat. No. **NB50-ENDO1**



Tall Equipment Cart  
Cat. No. **NB62-ENDO2**

To configure a Nimbl cart to your exact specifications, please visit [www.metroconfigurator.com](http://www.metroconfigurator.com)  
Nimbl carts are built to exact customer specifications, therefore, they are non-cancellable, non-returnable.



# Application Carts

Package includes carts, accessories and colored drawer pulls as shown.



Wound Care Cart  
Cat. No. **NB50-WOCN1**



Dialysis Cart  
Cat. No. **NB38-DIA1**



Isolation Cart  
Cat. No. **NB62-ISO1**



Nurse Server Cart  
Cat. No. **NB50-NURSE1**



Supply Cart  
Cat. No. **NB62-SUP1**



Emergency  
Department Cart  
Cat. No. **NB50-EDI**

To configure a Nimbl cart to your exact specifications, please visit [www.metroconfigurator.com](http://www.metroconfigurator.com)  
Nimbl carts are built to exact customer specifications, therefore, they are non-cancellable, non-returnable.

## Below Worksurface Accessories

Description	Width x Length x Height		Cat. No.
	(in.)	(mm)	
Hanging bins	7.25 x 4.13 x 3	184 x 105 x 75	<b>NB586</b>
Equipment shelf, full depth, 1 1/8" (35mm) side ledges	16.13 x 17.00 x 1.88	410 x 432 x 48	<b>NB589</b>
3"H tote + key lock shelf/slide [shelf 15 1/8"x17" (383x426mm)]	10.88 x 16.50 x 3.50	276 x 419 x 89	<b>NB603</b>
6"H tote + key lock shelf/slide [shelf 15 1/8"x17" (383x426mm)]	10.88 x 16.50 x 6.00	276 x 419 x 152	<b>NB606</b>



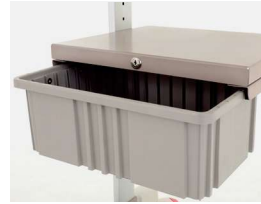
**NB586**  
Hanging Bins



**NB589**  
Equipment Shelf



**NB603**  
3"H-Tote Assembly



**NB606**  
6"H-Tote Assembly

## Above Worksurface Accessories

Description	Width x Length x Height		Cat. No.
	(in.)	(mm)	
Upper Accessory Rail	17 x 8.25 x 2	432 x 210 x 51	<b>NB503</b>
Upper Shelf, Half-Depth, 3/4"H (19mm) Lip, 1 1/8"H (35mm) Rear	8.25 x 16.75 x 1.38	210 x 425 x 35	<b>NB504</b>
Half Size Metal Utility Bin, with 2 Adjustable Dividers	3.88 x 5.73 x 2.82	98 x 145 x 72	<b>NB581</b>
Full Size Metal Utility Bin, with 2 Adjustable Dividers	3.88 x 11.70 x 2.82	98 x 297 x 72	<b>NB582</b>
Label / Tape Dispenser, Holds Rolls up to 2 1/2"L (73mm)	5.63 x 3.13 x 1.38	143 x 79 x 35	<b>NB583</b>
Wire Basket	3.63 x 16.00 x 12.13	92 x 406 x 308	<b>NB585</b>
Utility Bin (1), Clear Plastic with Clear Lid	7.25 x 4.13 x 3.00	184 x 105 x 76	<b>NB586</b>
Tablet Arm - Holds 4.75" to 10" Tablets	-	-	<b>NB311</b>



**NB503**  
Accessory Rail



**NB504**  
Upper Shelf



**NB581**  
Half-size bin



**NB582**  
Full-size bin



**NB585**  
Basket



**NB586**  
Bin

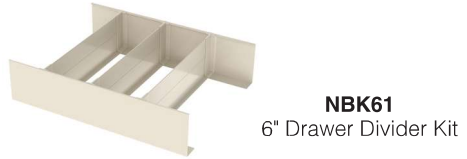


**NB583**  
Dispenser

To configure a Nimbl cart to your exact specifications, please visit [www.metroconfigurator.com](http://www.metroconfigurator.com)  
Nimbl carts are built to exact customer specifications, therefore, they are non-cancellable, non-returnable.

## Drawer Dividers

Description	Width x Length x Height		Cat. No.
	(in.)	(mm)	
3"H-Drawer Short-Divider Kit (6 Spanners, 8 Short, 8 Adapters, 6 End Clips)	13.25 x 13.75 x 3	337 x 346 x 76	<b>NBK3</b>
3"H-Drawer Long-Divider Kit (2 Spanners, 3 Long Dividers, 6 Adapters)	13.25 x 13.75 x 3	337 x 346 x 76	<b>NBK31</b>
3"H-Drawer Extra Spanners (2 spanners, 2 end clips)	13.63 x 3	346 x 76	<b>NMDK3-SP</b>
3"H-Drawer Extra Short-Dividers (4 T-Dividers, 4 Adapters)	3 x 3	76 x 76	<b>TD3-3.00</b>
3"H-Drawer Extra Long-Dividers (4 T-Dividers, 4 Adapters)	11.75 x 3	298 x 76	<b>TD3-11.75</b>
6"H-Drawer Short-Divider Kit (6 Spanners, 8 Short, 8 Adapters, 6 End Clips)	13.25 x 13.63 x 6	337 x 346 x 152	<b>NBK6</b>
6"H-Drawer Long-Divider Kit (2 Spanners, 3 Long Dividers, 6 Adapters)	13.25 x 13.63 x 6	337 x 346 x 152	<b>NBK61</b>
6"H-Drawer Extra Spanners (2 spanners, 2 end clips)	13.63 x 6	346 x 152	<b>NMDK6-SP</b>
6"H-Drawer Extra Short-Dividers (4 T-Dividers, 4 Adapters)	5 x 6	127 x 152	<b>TD6-5.00</b>
6"H-Drawer Extra Long-Dividers (4 T-Dividers, 4 Adapters)	11.75 x 6	298 x 152	<b>TD6-11.75</b>



## Side Accessories

Description	Width x Length x Height		Cat. No.
	(in.)	(mm)	
Side accessory bracket	10 x .13 x 5.25	254 x 3 x 133	<b>NB205</b>
Side bin, (2) 4 3/8" x 7 5/8" x 4 1/8" bins + bracket (111x194x105mm)	15.25 x 4.25 x 5	210 x 425 x 35	<b>NB216</b>
Waste basket & holder (fits ~ 3.25-gallon size container)	10.88 x 7.75 x 5.63	276 x 197 x 143	<b>NB221</b>
Single glove box holder	10.13 x 3.94 x 6.38	257 x 100 x 162	<b>NB236</b>
Triple glove box holder	10.88 x 7.75 x 18.38	276 x 197 x 467	<b>NB237</b>
Sanitizer pump holder - adjustable 1 1/8"-3 3/4" diameter (48 - 95mm)	3.50 x 3.75 x 4.13	89 x 95 x 105	<b>NB240</b>
Wipes container holder - adjustable 3"-5.25" diameter (76 - 133mm)	4.38 x 5.25 x 5.63	111 x 133 x 143	<b>NB241</b>
Sharps container bracket	10.88 x 7.75 x 18.38	276 x 197 x 467	<b>NB250*</b>
Lockable sharps cabinet, (1) 5-qt container, bracket, glove box	13 x 4.75 x 19	330 x 121 x 483	<b>NB251**</b>
10 PK Replacement sharps container for sharps cabinet NB251	5qt. Each	4.7L Each	<b>NB252</b>
Peel pouch container	6.06 x 3.06 x 18.19	154 x 78 x 462	<b>NB312</b>
2 hook iv pole with cart mount	7.63 x .63 x 45	194 x 16 x 1143	<b>NB315</b>
4 hook iv pole with cart mount	3.50 x 4.80 x 45.44	89 x 122 x 1154	<b>NB317</b>
Chart holder, 5 1/4"H (133mm) front lip	11.5 x 4 x 6.75	292 x 102 x 171	<b>NB576</b>

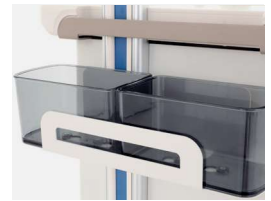


**NB315** 2-Hook I.V. Pole  
**NB317** 4-Hook I.V. Pole

\*NB250 holds up to 42" (1067mm) container perimeter. \*\* NB251 height without glove box holder 16.88" (429mm)



**NB205**  
Accessory Bracket



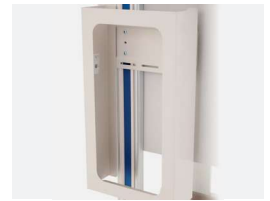
**NB216**  
Side Bin



**NB221**  
Container Holder



**NB236**  
Single Glove Box Holder



**NB237**  
Triple Glove Box Holder



**NB240**  
Sanitizer Holder



**NB250**  
Sharps Bracket



**NB251**  
Sharps Cabinet



**NB311**  
Tablet Holder



**NB312**  
Peel Pouch Holder

**NB241**  
Wipes Holder