



**nimbl**®  
Compact Medical Cart



# Everywhere you go,

Optimize your clinical process with nimbl<sup>®</sup>. A compact medical cart that integrates a worksurface, equipment, and supplies into an easily maneuverable clinician favorite.

so goes **nimbl**.<sup>®</sup>



METRO  
**nimbl**

# Easy to maneuver.



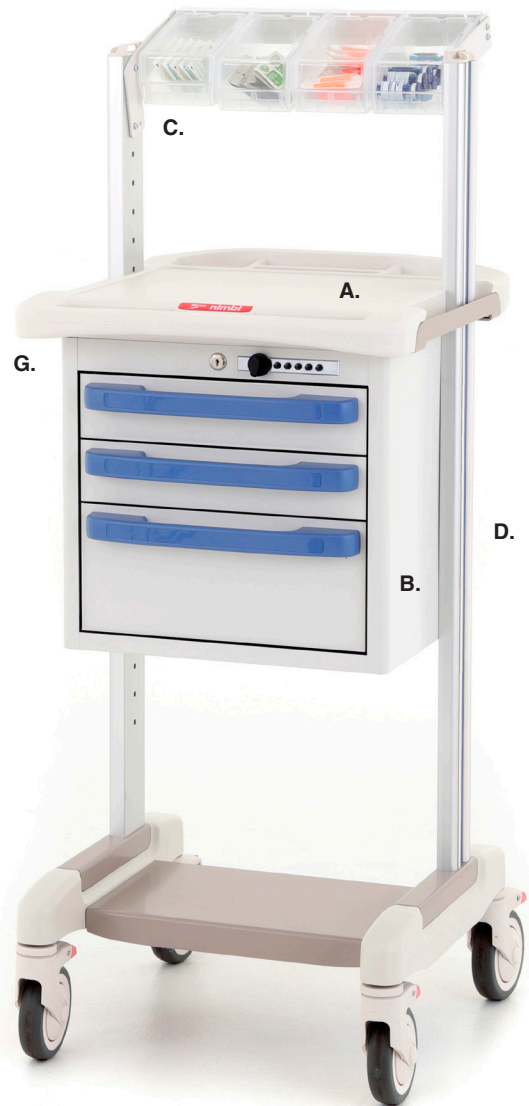
Stores your essentials.



Super lightweight.



Ultra-Compact footprint.




- A. All polymer worksurface with integrated push handle & utility tray.
- B. Optional drawer modules 3"H – 24"H (76 – 610mm)
- C. Optional overhead bin rails and/or storage shelves. Plus, accessories such as Bins, Trays, Label/Tape Dispenser...
- D. Side accessory rail accommodates Sanitizer Holders, Sharps Containers, Waste Container, Glove Holder...
- E. Optional lower bin rails, drawer totes, or equipment shelves
- F. 5 designer color options for accent strips and drawer pulls
- G. Simplify security with pushbutton locks—no keys.



Drawer dividers create organization and efficiency at the point of care.



  
**Functional**  
features.



# Right Sized.

**38"**  
x 20" x 20"



**50"**  
x 20" x 20"



**62"**  
x 20" x 20"



3 convenient heights all small enough to go with you, but big enough to hold only what you actually need.

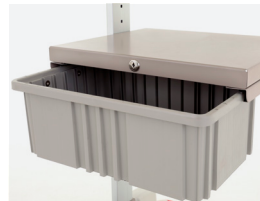
## Popular Accessories.



**NB586**  
Hanging Bins



**NB586**  
Bin



**NB606**  
6" H-Tote Assembly



**NB221**  
Container Holder



**NB251**  
Sharps Cabinet



**NB236**  
Single Glove Box Holder



38" General Use Cart  
Cat. No. **NB38**



50" General Use Cart  
Cat. No. **NB50-BAS1**



Equipment Cart  
Cat. No. **NB50-ENDO1**



62" General Use Cart  
Cat. No. **NB62-BAS1**

**Whatever your process, make it nimbl.**



Dialysis Cart  
Cat. No. **NB38-DIA1**



Wound Care Cart  
Cat. No. **NB50-WOCN1**



Emergency  
Department Cart  
Cat. No. **NB50-EDI**



Isolation Cart  
Cat. No. **NB62-ISO1**



[www.metro.com](http://www.metro.com)

LO7-207 4/26

Information and specifications are subject to change without notice. Please confirm at time of order.

© 2026 InterMetro Industries Corporation, Wilkes-Barre, PA 18705



We put space to work.

