

# Image-Pro Insight

Image capture and analysis software for  
Mantis Elite HD and Lynx EVO/Smart Cam



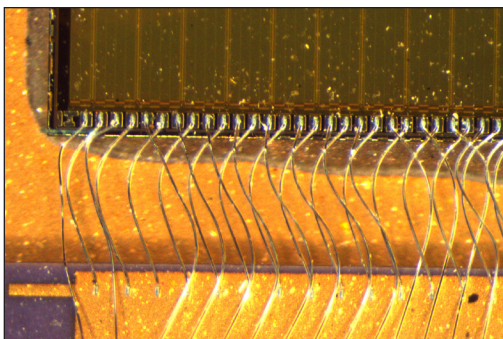
## Image-Pro<sup>®</sup> Insight 9

**Image-Pro Insight** is a powerful yet simple image acquisition, processing and analysis software solution for Mantis Elite-Cam HD and Lynx EVO/Smart Cam. Image-Pro Insight offers intuitive tools that make it easy to capture and analyze images to extract valuable data for advanced investigation.

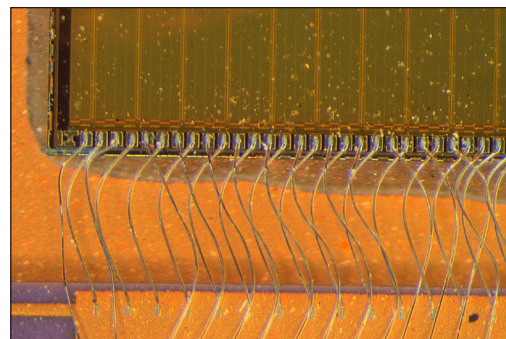
### Capture

Easily capture high quality images and movies with a range of acquisition tools. Simple controls with a live camera feed means user can quickly optimize image settings, including:

- Exposure
- Saturation gain
- Offset
- White balance
- Gain
- Gamma



Sample of HDR before

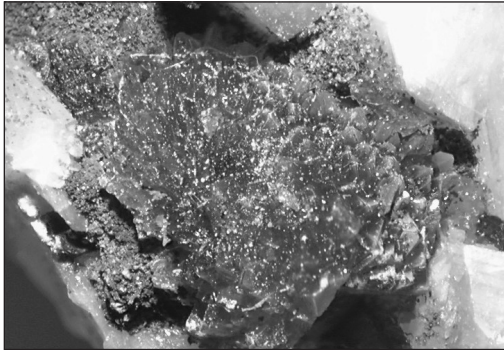


Sample of HDR after

## Process

Implement sophisticated image processing and enhancement functions with a wide range of tools, making it easy to analyze and reveal important details within your images.

- Line profile
- Color composite
- Extract and merge color channels
- Extend depth of focus
- View image intensity with surface plot
- Correct for noise and enhance with filters



Crystal in grayscale

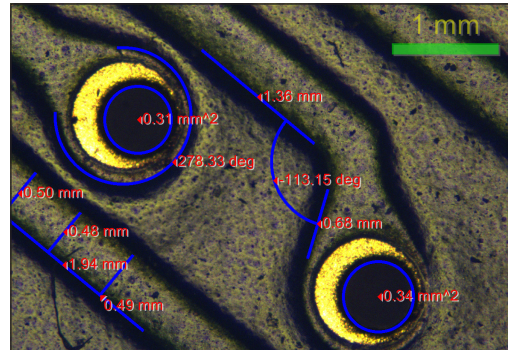


Image of PCB with measurements

## Dimension

Use an array of dimensioning tools to better quantify data. Set-up multiple calibrations for all of your lens magnifications, then measure and classify all of your dimensions with different colors, names and shapes to display and organize data.

## Annotate and share

With Image-Pro Insight, it's easy to present your images and analysis data. Use one-click tools to export images, measurements, and annotations to Excel, as well as to popular presentation programs like PowerPoint, Word, or to PDF.

## System requirements

### Supported Operating Systems:

Windows® 7 Professional and Ultimate– 32 & 64-bit  
Windows® 8 Professional and Enterprise– 32 & 64-bit

### Recommended Requirements

Quad-core processor or better  
16 GB of RAM memory or higher  
20 GB available on installation drive + free space for images  
DVD-ROM drive  
1,280x800 display with 1GB video card  
USB port required for hard licenses and offline license activation  
Internet connection required for online services\*  
Internet Explorer version 9 or higher

### Minimum Requirements

Dual-core processor or better  
4 GB of RAM  
5 GB available on installation drive + free space for images  
DVD-ROM drive  
1,024x768 display with 32-bit video card  
USB port required for hard licenses and offline license activation  
Internet connection required for online services\*  
Internet Explorer version 9 or higher