



Manifold kit provides a convenient, cost effective way to collect waste from multiple HPLC machines.

HPLC Safety Disposal Cans

Quick-disconnect fittings and coalescing carbon filters keep laboratory and personnel safe with a compliant, environmentally-friendly solution to waste collection

Ideal for HPLC waste applications:

- Vapor and fire protection
- Safeguard against accidental spills
- Maximize safety and convenience

Hands-free solvent collection: Solvent flows freely from your process into the container through tubing making it suitable for either pump-fed or gravity-flow HPLC waste methods. Two disconnect fittings, one intake and one vent, eliminate back pressure in liquid flow disposal line and provide controlled handling of vapor.

Durability and safety: Translucent polyethylene container allows quick visual inspection of liquid level. Pouring spout is equipped with a stainless steel flame arrester, which reliably dissipates heat to prevent flashback ignition. Spring-loaded, sealed lid automatically vents to guard against explosion. Control odors with a coalescing/carbon filter.

Quick-Disconnect system: Easy-on, easy-off mechanism offers detachment of the can from the process without leaks, drips or vapor release. Once disconnected, the container is automatically sealed to prevent spills.



Global Protection
Justrite products are available worldwide. For pricing and availability, simply contact the authorized distributor nearest you.

Coalescing carbon filter
Optional filters are for use with only round style cans.

Optional manifold

Valved quick-disconnect fittings automatically close when decoupled to prevent vapor or liquid release.

Translucent color lets you check liquid level at a glance.

Oval-style maximizes storage space and features one-handed pouring from narrow 1-7/16-in (36-mm) spout.

Stainless-steel fittings offer PTFE O-rings on standard containers. Also available with EPDM or Viton O-ring seals on customized cans.

Easy-carrying handle with fixed position latch keeps spring loaded cover open for convenient pouring during disposal.

Economically priced polypropylene barbed fittings offer EPDM O-rings.

Large 3-5/8-in (92-mm) opening facilitates controlled pouring into larger vessels for proper hazardous waste disposal. Spout is equipped with a stainless steel flame arrester.

Meets OSHA, NFPA and EPA requirements.

Create custom cans, with up to eight ports, for multiple HPLC units. See our custom-can form online at justritemfg.com



Capacity	Dimensions OD x H	Fitting No 1 for Liquid Intake			Fitting No 2 for Vapor Release			Model No	Ship Wt lb/kg
		Material	O-Ring	Tubing* Size ID	Material	O-Ring	Tubing* Size ID		
1 gallon (4 L) oval can	7.75 x 5.25 x 12.75 in 197 x 133 x 324 mm	Polypropylene	EPDM	0.375 in 10 mm	Polypropylene	EPDM	0.375 in 10 mm	12160	2/1
2 gallon (7.5 L) round can	12 x 14.75 in 305 x 375 mm	Stainless Steel	PTFE		Stainless Steel	PTFE		7/3	
2 gallon (7.5 L) round can		Polypropylene	EPDM		Polypropylene	EPDM			
5 gallon (19 L) round can	12 x 20 in 305 x 508 mm	Stainless Steel	PTFE		Stainless Steel	PTFE		11/5	
5 gallon (19 L) round can		Polypropylene	EPDM	Polypropylene	EPDM				
5 gallon (19 L) round can with faucet no. 08916		Stainless Steel	PTFE	0.25 in 6 mm	Stainless Steel	PTFE	12770	12/6	
5 gallon (19 L) round can with faucet no. 08916				0.375 in 10 mm			12771		

* Tubing not supplied with containers.



Coalescing Carbon Filters

Use with HPLC cans to minimize odor, and capture 99% of liquid particulates released in the form of gaseous vapor. Vent filter snaps conveniently into the quick-disconnect fitting. Carbon filter cartridge color indicator beads (top portion) changes from purple to black to indicate when replacement is necessary. Replace the coalescing filter (bottom portion) after three or four carbon filter cycles. Use filters with all 2-gallon (7.5-L), 5-gallon (19-L) and custom-built quick-disconnect cans; not for use with oval style can. Meets EPA 40 CFR 264.173.



Description	Attachment/Use With	Model No	Ship Wt lb/kg
Coalescing/carbon filter combo with stainless steel fittings	Disconnect cans with stainless steel fittings	28162	2/1
Coalescing/carbon filter combo with polypropylene fittings	Disconnect cans with polypropylene fittings	28161	

Carbon Filter Replacements

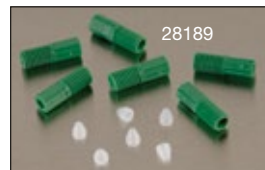
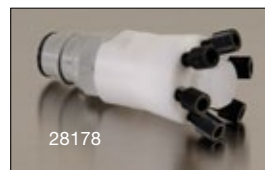
Description	Attachment/Use With	Model No	Ship Wt lb/kg
Colormetric/carbon filter 3-Pack replacements	28162 or 28161 Coalescing/carbon filter	28157	2/1

NOTE: When using HPLC carbon filter with FM approved Justrite safety disposal can, the Justrite safety disposal container has not been FM approved or tested in assembly with the HPLC filter attached. However, the container does comply with US OSHA 1910 and NFPA Code 30 requirements, both with and without the HPLC filter. Do not transport safety container while carbon filter is attached.



HPLC PTFE Manifold and Compression Fittings

Enables up to six waste lines (per manifold) from HPLC processes to be fed into a single intake fitting. Safety container with manifold installed is OSHA compliant and meets NFPA Code 30. Use on round containers; not for use on oval style can.



Manifold no. 28177 with stacker no. 28179 and tubing connector package nos. 28188 and 28189.

Description	Attachment/Use With	Model No	Ship Wt lb/kg
PTFE manifold with stainless steel fitting	Containers with stainless steel fittings	28177	2/1
PTFE manifold with polypropylene fitting	Containers with polypropylene fittings	28178	
PTFE manifold with stainless "stacker" connector	28177 or 28178	28179	
OD 0.0625 in hard wall ETFE tubing compression fittings with ferrules (package of six - blue)		28188	
OD 0.125 in hard wall ETFE tubing compression fittings with ferrules (package of six - green)		28189	
OD 2 mm hard wall ETFE tubing compression fittings with ferrules (package of six - yellow)		28121	
OD 2.5 mm hard wall ETFE tubing compression fittings with ferrules (package of six - orange)		28122	
OD 3 mm hard wall ETFE tubing compression fittings with ferrules (package of six - red)		28123	

Polytetrafluoroethylene (PTFE) is a synthetic fluoropolymer. Ethylene tetrafluoroethylene (ETFE) is a fluorine based plastic.



84003 with TF12755

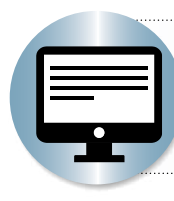
Spill Basin

Durable polyethylene basin keeps work area clean around HPLC cans and captures any inadvertent leakage from HPLC inflow tubes.

Description	Dimensions W x L X H	Model No	Ship Wt lb/kg
5 gallon (19 L)	14.875 x 14.875 x 7.625 379 x 379 x 194 mm	84003	4/2



Need a stainless steel manifold?
For containers with stainless steel fittings, use a stainless steel manifold that accepts 4 waste lines. Visit our website and search model no. 28168.



Custom made safety disposal cans . . .
Design your own 2- or 5-gallon can with up to 8 fittings. Visit our website and search on "custom HPLC."



Large opening with cap held open provides convenient filling and pouring.

Liquid Disposal Safety Cans

A better solution for the containment of liquid flammable or corrosive waste

- Durable poly in safety red or translucent white to easily detect liquid level.
- Current-carrying, patented carbon insert embedded in the container allows for proper grounding.

High-density polyethylene (HDPE) disposal cans provide superior chemical resistance and leak protection. Spring-loaded sealed cap, normally closed, automatically vents between 3 and 5 psig (0.2 and 0.35 bar). Stainless steel handle and hardware with latch-catch system hold the cap in the open position for easy filling and pouring. Large-mouth opening features a built-in stainless steel flame arrester to guard against outside ignition. The broad-base design provides stability and resists accidental tip over.

Model numbers 14265 and 14565 with built-in polyethylene fill gauge indicator pops up to warn you that the container is almost full.



14762

14265

12754

12772

Description and Capacity	Dimensions OD x H	Approv/Lstg Regulation	Red Model No	White Model No	Ship Wt lb/kg
2 gallon (7.5 L) polyethylene can with stainless steel hardware with 08530 fill gauge built-in	12 x 14.75 in 305 x 375 mm	—	14265	—	7/3
2 gallon (7.5 L) polyethylene can with stainless steel hardware		FM	14762	12751	
5 gallon (19 L) polyethylene can with stainless steel hardware	12 x 20 in 305 x 508 mm	—	14765	12754	11/5
5 gallon (19 L) polyethylene can with stainless steel hardware with 08530 fill gauge built-in		—	14565	—	
5 gallon (19 L) polyethylene can with stainless steel hardware and faucet		FM	—	12772	
Replacement flame arrester, stainless steel	—	—	11406	11406	2/1



Global Protection

Justrite products are available worldwide. For pricing and availability, simply contact the authorized distributor nearest you.

Countertop Lab Tray

Polyethylene tray catches drips or spills and keeps counter clean and uncontaminated. Slightly curved edge and ribbed bottom keeps containers from sitting in pooled liquid.

Description	Nominal Dimensions L x D	Model No	Ship Wt lb/kg
Countertop lab tray	31.125 x 18.5 in 791 x 470 mm	29965	4/2



Drain Cans

Safely collect waste liquids from parts washing equipment with a drain can featuring a wide-mouth, 8-7/8-in (225-mm) plated steel funnel that catches drainage with no spills or mess. The funnel has a built-in flame arrester that protects liquid contents from ignition sources. A 3/4-in (19-mm) threaded plug permits disposal of waste liquids into a permanent receptacle. Funnel removes for easy cleaning. Optional drain can cover fits on funnel top to keep dirt out.



Position drain cans under rinse tanks to safely collect used solvents.



Description and Capacity	Dimensions OD x H	Approv/Lstg Regulation	Model No	Ship Wt lb/kg
3 gallon (11 L) steel drain can	11.625 x 12.25 in 295 x 311 mm	FM	10903	7/3
5 gallon (19 L) steel drain can	11.625 x 16.75 in 295 x 425 mm		10905	8/4
Optional drain can cover fits both sizes			11176	2/1

Biohazard Waste Cans

Safe, temporary collection of biological waste

- Meets OSHA 29 CFR1910.1030 for the segregation of infectious waste.
- Perfect for medical facilities and research laboratories.

Safely store contaminated laundry and other regulated waste (except sharps) in sturdy, leakproof steel cans with automatic, self-closing lid. Easy foot pedal operation opens the container to dispose of biohazard waste, and closes upon pedal release to reduce the risk of contamination. Can comes with one biohazard bag that fits around the circumference of the can top—optional model number 05901 includes a roll of 100 liner bags. Optional label kit number 25880 includes three additional biohazard labels for visibility from all sides to comply to California Health and Safety Code 118280.

To lessen disruptive closure noise in quiet environments, use SoundGard™ models which incorporate a muffling pad inside the lid—reducing noise by approximately 200% over standard models.



Foot pedal offers hands-free opening to reduce the risk of contamination.



Description and Capacity	Dimensions OD x H	Approv/Lstg Regulation	White Model No	Red Model No	SoundGard™ White Model No	SoundGard™ Silver Model No	Ship Wt lb/kg
6 gallon (20 L) biohazard can	11.875 x 15.875 in 302 x 403 mm	FM, TÜV	05910	05910R	05915	05914	10/5
10 gallon (34 L) biohazard can	13.937 x 18.25 in 354 x 464 mm		05930	05930R	05935	05934	13/6
100 red liner bags, 11 microns thick	33 x 24 in 838 x 610 mm	—	05901				2/1
Code compliant label kit for California (three labels and instructions)			25880				1/1