



PRODUCT OVERVIEW

SaniMister

Frontline Misting Tunnel

version 3.5

Applies a sanitizing agent in a mist to shipping containers, feed and bedding bags and other crates.

KEY FEATURES AND BENEFITS

- Provides complete coverage of any product conveyed through the work opening
- Portable and easily moved within your facility
- Optimum conveyor speed of 30 - 50 feet per minute
- Constructed entirely of corrosion resistant materials
- Sprays have a capacity of 0.018 gallons per minute
- Dual 1 x 1 flat stainless steel belts
- Re-circulating and or to drain

KEY SPECIFICATIONS

- 2 sizes available
- Polished #16 ga. Type 316 stainless steel
- 110V / 1PH / 60 Hz, 3A, plug in type



SaniMister

Frontline Misting Tunnel

version 3.5

DESCRIPTION

The SaniMister CS 2020 or CS 2828 Sanitizer is designed to provide complete coverage of any product conveyed through the work opening. Simply plug the machine into an 110V outlet and it's ready to sanitize your product(s).

DIMENSIONS

CS 2020: 33" w x 60" l x 58.5" high (excluding the conveyor)
 CS 2828: 41" w x 60" l x 67" high (excluding the conveyor)
 Conveyor: Collapsible from 8' – 2' long x 24" w with height adjustment ability.

FEATURES

The SaniMister is a self contained, portable sanitizer that is designed to be easily moved within a facility. Four 5" stainless steel swivel casters (with brakes) allow smooth transfer throughout the building. The SaniMister can also be built with a Bio-Door for permanent pass through wall systems.

CAPACITY

The conveyor is provided with a DC drive motor that has an infinite range of 0 – 70 feet per minute. Note: Optimum conveyor speed for sanitizing should be between 30 – 50 feet per minute, depending upon product being conveyed.

CONSTRUCTION

The machine housing is constructed entirely of corrosion resistant materials as described below:

Housing	Polished #16 ga.Type 316 stainless steel
Covers/Doors	Polished #16 ga.Type 316 stainless steel
Supports	Type 316 stainless steel structures
Tank/cover	Plastic
Sprockets	UHMW plastic
Conveyor	Stainless steel Type 316
Drive	Nylon, plastic and stainless steel
Piping	PVC
Misting Nozzles	Acetal plastic with stainless steel filter screens
Casters	Type 304 stainless steel and polyurethane plastic wheels, all swivel/ lock

SPRAY SYSTEM

Spray nozzles are complete with 200 mesh filter screens that are easily removable for cleaning or replacement. They are strategically located above, below and on both sides of the SaniMister to ensure 100% coverage. The nozzles have a capacity of 0.018 gpm and are provided with a throttling valve for optimum performance. The tank has a capacity of 3 gallons and is complete with a drain valve and in-line pump suction strainer. Plastic curtains are provided at both ends of the SaniMister to contain sprayed mist within the tunnel area.

CONVEYOR SYSTEM

The SaniMister is provided with dual 1 x 1 flat stainless steel belts. The nozzles are located between the belts to ensure full spray impact on the product (no masking of the SaniMister by the conveyor.) An electric eye is mounted at the load end on the SaniMister and is designed to shut the pump off if no product has been conveyed for a pre-set period of time.

UNLOAD CONVEYOR

The unload end of the SaniMister is provided with a pitched roller conveyor, collapsible from 8 ft. to 2 ft. For the convenience of mobility, the SaniMister is designed to be moved with the conveyor attached or detached.

CONTROL PANEL

A plastic, Nema 4, control panel is provided and complete with motor starters, relays, timer for electric eye and the speed controller for the conveyor drive. In addition, plastic push button enclosures are provided at the load end for conveniently starting/stopping the SaniMister and at the unload end as an emergency stop. All wiring is provided in accordance with NEC requirements.

CUSTOMER REQUIREMENTS

Customer to provide the following:

Electric	110V / 1PH / 60 Hz, 3A, plug in type
Fresh Water	3 gallons for tank, room temperature
Chemical	Proper water soluble sanitizing chemical

MAINTENANCE RECOMMENDATIONS

MISTING NOZZLES

Nozzles should be cleaned once a month in an alcohol solution to remove any deposits from the stainless steel screens. The nozzles need only be hand tightened into the piping when replacing. Replacement set of misting nozzles included.

RESERVOIR

Remove the reservoir tank from the quick disconnect fittings and rinse in warm water to remove any debris to avoid compromising the in-line pump filter. It is recommended that this be done on a monthly basis and more frequently if usage is heavy.

DISINFECTANT

When using proper chemical, replace daily if usage is heavy (i.e. more than 20 times a day). Replace once a week if usage is light (i.e. 20 – 30 items for the week). This determination is at the discretion of the user.

OPTIONAL EQUIPMENT

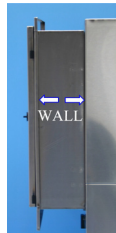
UNLOAD SHROUD

A removable shroud can be provided to mount on the unload end of the SaniMister in order to help contain misting vapors within the chamber. The shroud is 2 ft. long and is constructed of 20 ga. Type 304 stainless steel, not needed with bio-door.



BIO-DOOR

For sealed built in pass through wall systems. Dirty to clean or clean to dirty.



FRONT LOAD CONVEYOR

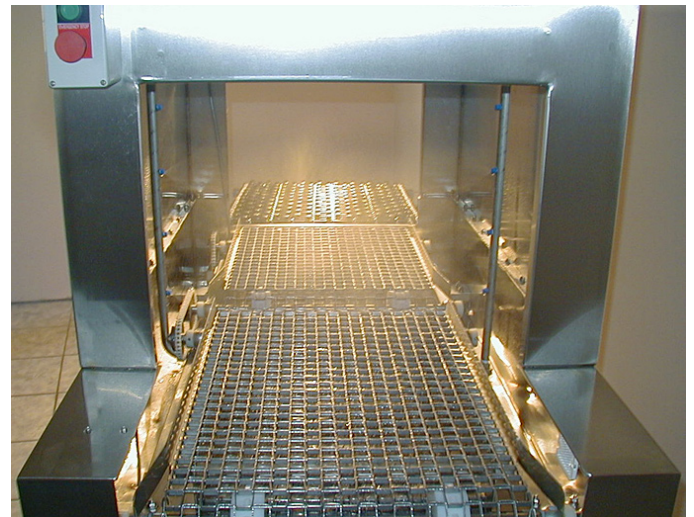
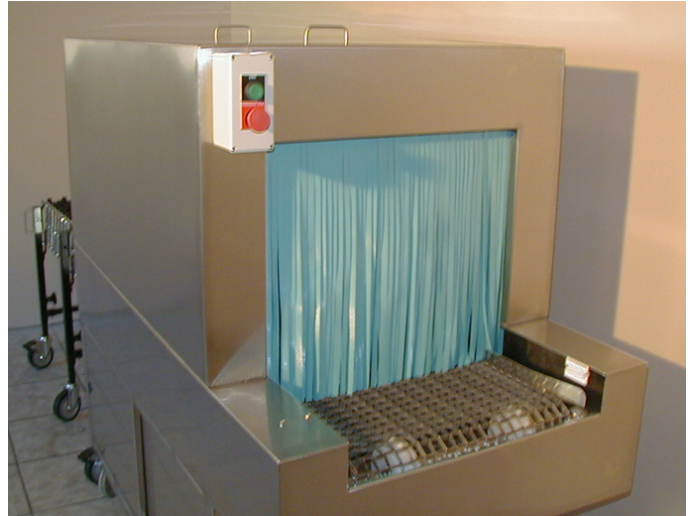
All misting tunnels come standard with the ability to add a front load conveyor at any time.

DELIVERY

3-4 months from time of purchase and or approved submittal. FOB shipping point.

TERMS

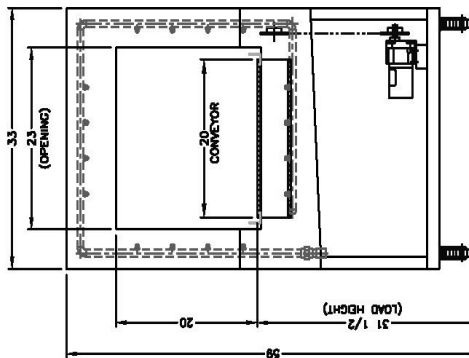
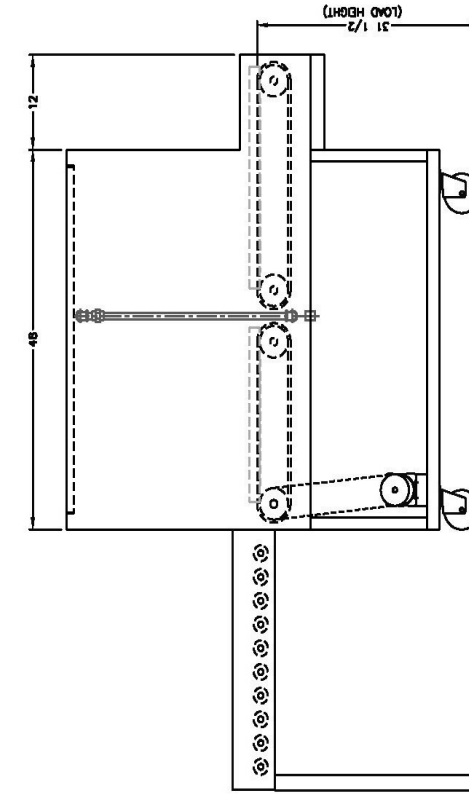
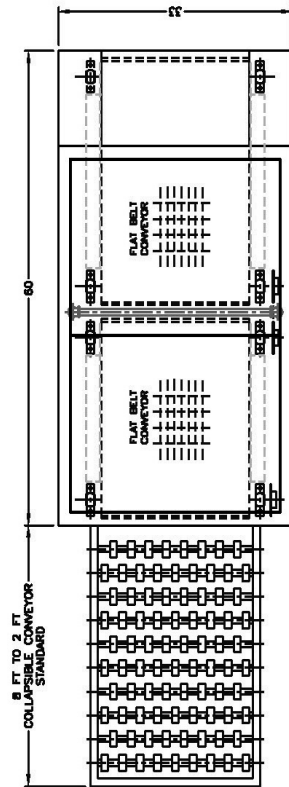
Net 30



SaniMister CS 2020

Frontline Misting Tunnel

version 3.5



DIRECTION OF CONVEYOR TRAVEL



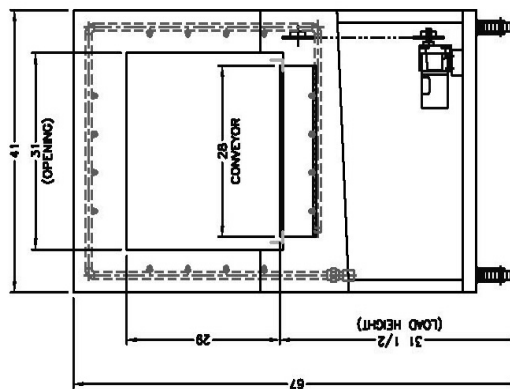
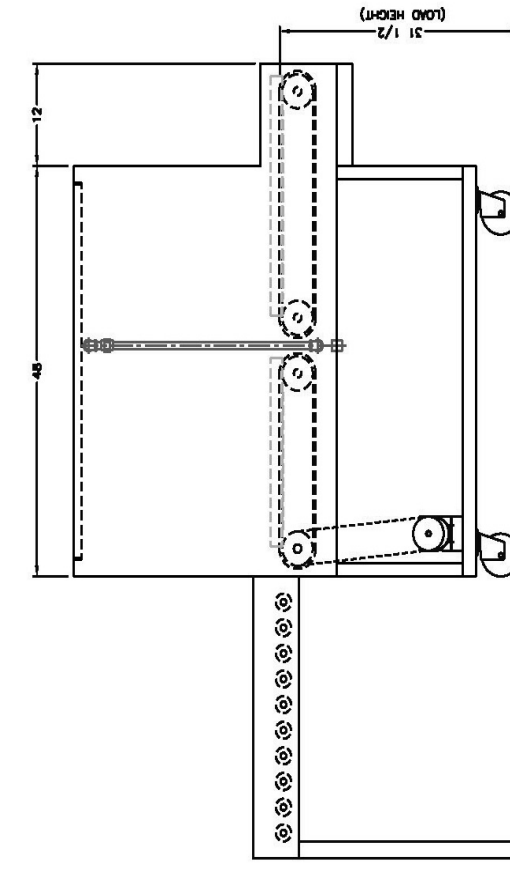
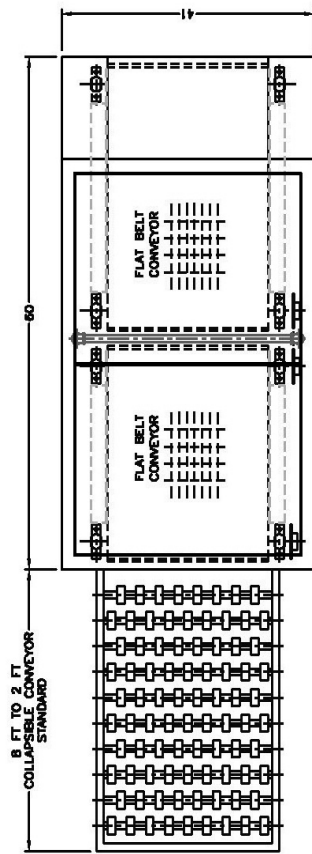
UNLOAD ELEVATION

VIKING MEDICAL MEDFORD LAKES, NJ	
CS2020 MISTING TUNNEL	DWG. NO. 2020 PROP SPT. 1 REV. 1 (2008-01-11)

SaniMister CS 2828

Frontline Misting Tunnel

version 3.5



DIRECTION OF CONVEYOR TRAVEL

UNLOAD ELEVATION

VIKING MEDICAL MEDFORD LAKES, NJ	
CS2828 MISTING TUNNEL	DWG. NO. 2828 PROP SPT. 1 REV. 0 (2008-01-11)