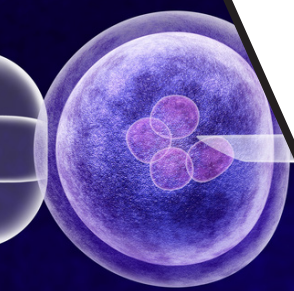


MVE Vapor Shipper Series



Features include

- MVE Protective Shipping Containers are recommended
- Protective shipping containers ensure upright shipping
- Low liquid nitrogen consumption
- Convenient lightweight package
- CHARGES IN TWO HOURS*



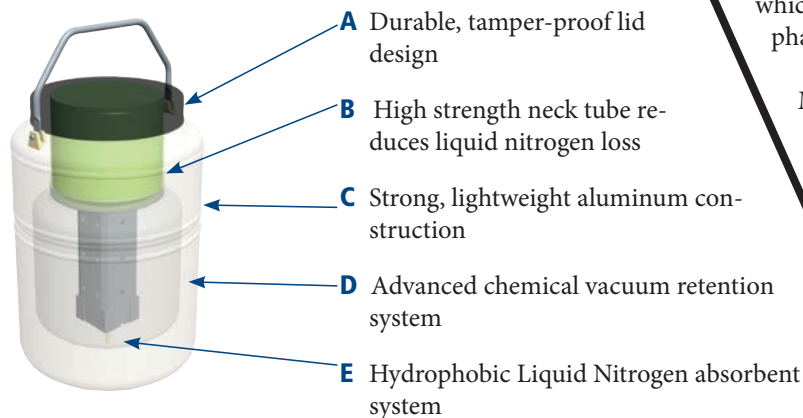
Featuring Advanced QWick™ Charge Technology

The MVE Vapor Shipper Series is designed for the safe transportation of biological samples at cryogenic (-150°C or colder) temperatures. MVE Vapor Shipper Series utilizes the Advanced QWick Charge Technology that will charge the vapor shipper in two hours. *New/warm tanks still need to be filled with LN₂ and allowed to sit for 24 hours to achieve maximum hold time. When a tank is already cold, the Advanced QWick Charge technology will apply, providing the benefit of same-day vapor shipping. Manufactured from durable, lightweight aluminum, the vapor shippers employ a hydrophobic compound which absorbs the liquid nitrogen to ensure dry, spill-free vapor-phase shipping.

MVE Protective Shipping Containers are recommended for usage. These containers may be used to ship your samples with a “non-hazardous” classification throughout the world, thus reducing costs and helping to assure sample viability.





Tank Features



www.labrepco.com



	SC 2/1V	SC 4/2V	SC 4/3V	SC 20/12V	XC 20/3V**	XC 30/12V	Mini-Moover	Cryo-Moover	Cryo-Shipper	CryoShipper XC	IATA
Maximum Storage Capacity											
No. of Canisters	1	1	1	6	4 + 1 Canister	1 (6) Tier Rack	1	7	1 Rack	-	Stainless Steel Secondary Container
No. of 1/2 cc Straws 10/cane	-	280	120	540	2500/2000**		60	3080		-	
No. of 1/2 cc Straws 1 Level Bulk	88	44	210	780	3750/3000**		88	4354		-	
No. of 1/4 cc Straws 1 Level Bulk	182	938	452	1630	7410/6000		185	-		-	
No. of 1.2 & 2.0 ml Vials 5/cane	-	95	40	150	675/560**		20	945		-	
No. of 1.2 & 2.0 ml Vials 6/cane	-	102	48	180	840/672**		24	1134	500	966 (Bulk)	Dimensions: 7-3/8" diameter
No. of blood bags stored 4R9953	-	-	-	-	-		-	-	10	10	8-3/4" deep
Performance (Hold Time overrides NER specifications)											
LN ₂ Capacity L est.	1.5	3.6	4.3	20.5	6.2	32.0	2.9	4.2	8.5	10.0	10.0
Static Holding Time Days	8	13	21	60	16	82	14	12	10	14	14
Static Evaporation Rate* L/day	0.19	0.26	0.20	0.09	0.35	0.22	0.20	0.35	0.85	0.70	0.70
Unit Dimensions											
Neck Opening in (mm)	1.40 (35.0)	2.75 (70.0)	2.00 (51.0)	2.18 (55.0)	3.81 (96.7)	2.50 (64)	1.40 (35.0)	3.80 (97.0)	8.50 (216.0)	8.50 (216.0)	8.50 (216.0)
Overall Height in (mm)	13.5 (343)	18.4 (468)	19.4 (492)	25.7 (652)	22.0 (559)	24.3 (617)	19.5 (495)	22.0 (558)	21.5 (546)	23.0 (584)	23.0 (584)
Outside Diameter in (mm)	7.25 (184)	8.70 (222)	8.70 (222)	14.50 (368)	14.50 (368)	17.0 (432)	7.25 (184)	18.30 (464)	14.50 (369)	15.00 (381)	15.00 (381)
Canister Height in (mm)	5.0 (127)	11.0 (279)	11.0 (279)	11.0 (279)	11.0 (279)	10.27 (260.85)	11.0 (279)	11.0 (279)	11.0 (279)	12.5 (317.5)	8.75 (222.25)
Canister Diameter in (mm)	1.20 (31)	2.62 (67)	1.81 (46)	1.50 (38)	3.20 (80)	1.73 (43.9) x 1.64 (41.7)***	1.20 (31)	3.10 (79)	5.6 (142) x 6.6 (167)***	8.5 (216)	7.375 (187.325)
Weight Empty lb. (kg)	6.0 (2.7)	10.0 (4.5)	11.6 (5.3)	28.4 (12.8)	25.1 (11.3)	44 (20)	9.0 (4.1)	30.5 (13.8)	26.1 (11.8)	33.0 (15.0)	33.0 (15.0)
Weight Charged vapor lb. (kg)	8.0 (3.6)	17.1 (7.7)	19.1 (8.7)	44.5 (20.1)	36.0 (16.3)	76 (34)	13.7 (6.2)	40.9 (18.6)	39.0 (17.7)	49.0 (22.2)	49.0 (22.2)
Weight Full liquid lb. (kg)	9.0 (4.1)	20.0 (9.1)	21.0 (9.5)	64.7 (29.3)	60.2 (27.3)	82 (37.2)	15.5 (7.0)	87 (39.5)	54.5 (24.7)	73.0 (33.1)	73.0 (33.1)
Protective Shipping Container Part No.	20750408	20750409	20750409	11912460	11912460	21325842	20750408	11930861	20750520	10741726	10741726

* Without inventory

** Optional center absorbent added to center canister (increases static hold time from 16 days to 18 days).

*** CryoShipper has a rectangular assembly measuring 5.6" (142 mm) by 6.6" (167 mm) with a usable height of 11.0" (279 mm).

Hold time specs actual performance may vary with atmospheric conditions, sample temperature, and usage.

TWO Year Parts Warranty • THREE Year Vacuum Warranty

Conforms to MDD 93/42/EEC, the Medical Device Directive for the EU.



Visit www.labrepco.com for more information.

© 2020 Chart Inc. reserves the right to discontinue its products, or change the prices, materials, equipment, quality, descriptions, specifications and/or processes to its products at any time without prior notice and with no further obligation or consequence. All rights not expressly stated herein are reserved by us, as applicable.