

GENIE™

The Brand You Trust

SI Scientific Industries, Inc.



Benchtop Lab Equipment

Vortex-Genie® Mixers



Vortex-Genie® 1

- Fixed speed Touch-On vortexing
- Large orbit for aggressive vortexing of difficult samples
- Used with Pop-off Cup (included) or optional 3-inch Platform
- May be used in cold rooms and incubators



Vortex-Genie® 2

- Most popular Vortex Mixer
- Variable speed
- Hands-Free or Touch-On control
- May be used in cold rooms and incubators



Vortex-Genie® 2T

- Same great features as the Vortex-Genie 2 with an integrated timer
- Variable speed
- May be used in cold rooms and incubators



Digital Vortex-Genie® 2

- Same great features as the Vortex-Genie 2 with digital control and display of speed and time
- Digital display provides accuracy, reproducibility and repeatability
- May be used in cold rooms and incubators



ABI Digital Vortex-Genie® 2

- Same great features as Digital Vortex-Genie 2
- Specially configured attachment for holding half skirted and unskirted PCR Plates
- May be used in cold rooms and incubators

Vortex-Genie® 1	SPECIFICATIONS	CATALOG NUMBERS	
Supplied	Pop-off Cup	120V – Std. Plug	SI-0136
Speed	3200 RPM (2700 for 50Hz models)	230V – No Plug	SI-0146
		230V – EU Plug	SI-0156
Dimensions (D x W x H)	165 x 122 x 165mm (6.5 x 4.8 x 6.5in)	230V – UK Plug	SI-0166
		230V – CH Plug	SI-0176
Weight	4 Kg (8.8 lb)	240V – AU Plug	SI-0196
Markings / Warranty	ETL, CE / 2-Years	100V – Std. Plug	SI-0186

Vortex-Genie® 2	SPECIFICATIONS	CATALOG NUMBERS	
Supplied	3-inch Platform, Pop-off Cup	120V – Std. Plug	SI-0236
Speed	600 - 3200 RPM (2700 for 50Hz models)	230V – No Plug	SI-0246
		230V – EU Plug	SI-0256
Dimensions (D x W x H)	165 x 122 x 165mm (6.5 x 4.8 x 6.5in)	230V – UK Plug	SI-0266
		230V – CH Plug	SI-0276
Weight	4 Kg (8.8 lb)	240V – AU Plug	SI-0296
Markings / Warranty	ETL, CE / 2-Years	100V – Std. Plug	SI-0286

Vortex-Genie® 2T	SPECIFICATIONS	CATALOG NUMBERS	
Supplied	3-inch Platform, Pop-off Cup	120V – Std. Plug	SI-T236
Speed	600 - 3200 RPM (2700 for 50Hz models)	230V – No Plug	SI-T246
		230V – EU Plug	SI-T256
Timer – Touch-On: Hands Free:	1 – 60 seconds 1 – 60 minutes or continuous	230V – UK Plug	SI-T266
		230V – CH Plug	SI-T276
Dimensions (D x W x H)	165 x 122 x 165mm (6.5 x 4.8 x 6.5in)	240V – AU Plug	SI-T296
		100V – Std. Plug	SI-T286
Weight	4 Kg (8.8 lb)		
Markings / Warranty	ETL, CE / 2-Years		

Digital Vortex-Genie® 2	SPECIFICATIONS	CATALOG NUMBERS	
Supplied	3-inch Platform, Pop-off Cup	120V – Std. Plug	SI-A236
Speed	500 - 3000 RPM (2850 for 50Hz models)	230V – No Plug	SI-A246
		230V – EU Plug	SI-A256
Timer – Touch-On: Hands Free:	1 – 99 seconds 1 – 99 minutes or continuous	230V – UK Plug	SI-A266
		230V – CH Plug	SI-A276
Dimensions (D x W x H)	165 x 122 x 165mm (6.5 x 4.8 x 6.5in)	240V – AU Plug	SI-A296
		100V – Std. Plug	SI-A286
Weight	4 Kg (8.8 lb)		
Markings / Warranty	ETL, CE / 2-Years		

ABI Digital Vortex-Genie® 2	SPECIFICATIONS	CATALOG NUMBERS	
Supplied	Microplate Adapter	120V – Std. Plug	SI-A536
Speed	500 - 3000 RPM (2850 for 50Hz models)	230V – No Plug	SI-A546
		230V – EU Plug	SI-A556
Timer – Touch-On: Hands Free:	1 – 99 seconds 1 – 99 minutes or continuous	230V – UK Plug	SI-A566
		230V – CH Plug	SI-A576
Dimensions (D x W x H)	165 x 122 x 165mm (6.5 x 4.8 x 6.5in)	240V – AU Plug	SI-A596
		100V – Std. Plug	SI-A586
Weight	4 Kg (8.8 lb)		
Markings / Warranty	ETL, CE / 2-Years		

Accessories for Vortex-Genie Mixers



SI-V203
Vertical High Speed 50ml
Tube Holder (3)



SI-V206
Vertical High Speed 15ml
Tube Holder (6)



SI-V209
Vertical High Speed
Microtube Holder (9)



SI-V506
Vertical 50ml Tube Holder (6)



SI-V512
Vertical 15ml Tube Holder (12)



SI-V524
Vertical Microtube Holder (24)



SI-H506
Horizontal 50ml Tube Holder (6)



SI-H512
Horizontal 15ml Tube Holder (12)



SI-H524
Horizontal Microtube Holder (24)



SI-HP524
Horizontal Plastic Clip
Microtube Holder (24)



SI-V525
Vertical 50ml, 15ml,
Microtube Holder



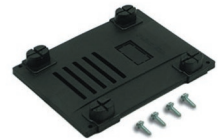
SI-0564
TurboMix™ Attachment



SI-0565
Universal Microtube Holder*



146-3011-00
Pop-off-Cup



OK-0236-408
Bottom Closure with Screws Kit



OK-0500-902
3-inch Platform with
Rubber Cover



OK-0500-901
3-inch Platform without
Rubber Cover



580-2013-00
Rubber Cover for
3-inch Platform

*May be used with TurboMix Attachment or Disruptor Genie. **6-inch Platform Required. ***Recessed Platform Required.

Accessories for Vortex-Genie Mixers



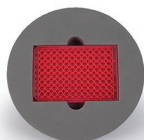
504-0233-00
H301 Multiple Sample Starter Set



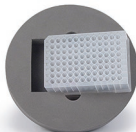
146-6005-00
6-inch Platform



504-0234-00
Microtube Foam Insert (2)**



504-0235-00
Microplate Foam Insert (2)**



504-0232-00
Deepwell Microplate Foam Insert (2)**



SI-0510
Two-Tier Microplate Foam Insert**



503-0282-00
H302 Large Sample Set



504-0039-00
Recesses Platform



568-0001-00
Elastic Bands (2)***



503-0283-00
Assorted Foam Inserts (4)***



503-0278-00
9-16mm Tube Foam Inserts (2)***



503-0279-00
14-29mm Tube Foam Inserts (2)***



503-0280-00
29-37mm Tube Foam Inserts (2)***



503-0277-00
Blank Foam Inserts (2)***



SI-0511
Large Ampule/Tube Attachment



SI-0570
Small Ampule/Tube Attachment



SI-0513
Microplate Adaptor for
Applied Biosystems



OK-0513-900
Replacement Elastic Bands
for SI-0513 (2)



- Unique patented vortexing motion
- For applications requiring more aggressive vortexing or pulsing action
- Programmable control and display of speed, time, and "RUN/STOP" time, for reproducibility and accuracy
- Use with all Vortex-Genie accessories
- May also be used as a standard "continuous" Vortex Mixer

SPECIFICATIONS	
Supplied	3-inch Platform, Pop-off Cup
Speed	500 - 3000 RPM (2850 for 50Hz models)
Timer - Hands Free	1-99 minutes or continuous
Pulse - ON/OFF	0.1 seconds - 99 minutes
Dimensions (D x W x H)	165 x 122 x 165mm (6.5 x 4.8 x 6.5in)
Weight	4 Kg (8.8 lb)
Markings / Warranty	ETL, CE / 2-Years
CATALOG NUMBERS	
120V - Std. Plug	SI-P236
230V - No Plug	SI-P246
230V - EU Plug	SI-P256
230V - UK Plug	SI-P266
230V - CH Plug	SI-P276
240V - AU Plug	SI-P296
100V - Std. Plug	SI-P286

See Pages 3 and 4 for accessories

U.S. Pats. 4,781,487
5,707,861
Patent Pending

DISRUPTOR GENIE®

Cell Disruptors



Fixed Speed with Timer



Digital Control

- Unique Patented Action for cell disruption, extractions and pellet resuspensions
- Rapid Cell Disruption - holds up to 12 snap cap or screw top microtubes (1.5ml or 2.0ml)
- Less costly than ultrasonic units or homogenizers

SPECIFICATIONS		
Cell Disruptor Model	Disruptor Genie	Digital Disruptor Genie
Supplied	Universal Microtube Holder (tubes not included) and Pop-off Cup	Universal Microtube Holder (tubes not included) and Pop-off Cup
Speed	3000 RPM (2850 for 50Hz models)	1000-3000 RPM (2850 for 50Hz models)
Speed Alarm	N/A	On/Off, Adjustable
Timer	0-15 minutes or continuous	0-99 minutes or continuous
Dimensions (D x W x H)	165 x 122 x 190mm (6.5 x 4.8 x 7.5in)	165 x 122 x 190mm (6.5 x 4.8 x 7.5in)
Weight	4.3 Kg (9.5 lb)	4.3 Kg (9.5 lb)
Markings / Warranty	ETL, CE / 2-Years	ETL, CE / 2-Years
CATALOG NUMBERS		
120V - Std. Plug	SI-D238	SI-DD38
230V - No Plug	SI-D248	SI-DD48
230V - EU Plug	SI-D258	SI-DD58
230V - UK Plug	SI-D268	SI-DD68
230V - CH Plug	SI-D278	SI-DD78
240V - AU Plug	SI-D298	SI-DD98
100V - Std. Plug	SI-D288	SI-DD88
ACCESSORIES ORDERING INFORMATION		
0.1mm Disruptor Beads for bacteria , 375g (8 fl oz)		SI-BG01
0.5mm Disruptor Beads for yeast , 375g (8 fl oz)		SI-BG05
3-inch Platform		OK-0500-902
Vertical High Speed Microtube Holder (9)		SI-V209

MULTI VORTEX-GENIE®

High Capacity Vortex Mixer



- Same true vortexing as with the original Vortex-Genie 2 with digital control and display of time and speed up to 1000 RPM
- Unique Adjustable clamping system accommodates a variety of containers, including deep well plates and up to (4) 500mL bottles
- Ideal for use with open top containers
- No additional holders or accessories necessary - (2) Tube Racks are included

SPECIFICATIONS	
Supplied (Capacity)	Two Tube Racks holding up to 12 tubes each of any material up to 29mm dia., up to six 250mL vessels, or up to 4 deep well plates
Speed	200 - 1000 RPM (950 for 50Hz models)
Orbit	4mm dia. (Same as Vortex-Genie 2)
Timer	1-99 minutes or continuous
Dimensions (D x W x H)	310 x 270 x 195mm (12.2 x 10.6 x 7.7in)
Weight	11.3 Kg (25 lb)
Markings / Warranty	CE / 2-Years
CATALOG NUMBERS	
120V - Std. Plug	SI-M236
230V - No Plug	SI-M246
230V - EU Plug	SI-M256
230V - UK Plug	SI-M266
230V - CH Plug	SI-M276
240V - AU Plug	SI-M296
100V - Std. Plug	SI-M286
ACCESSORIES ORDERING INFORMATION	
Tube Rack (for 12 tubes)	SI-M010
Tube Rack (set of 2 for 24 tubes)	SI-M020
Tube Rack Short (for 12 tubes)	SI-M010S
Tube Rack Short (set of 2 for 24 tubes)	SI-M020S

VORTEX-GENIE[®] Programmable High Velocity Vortex Mixer



- Fully programmable - speed, run time or continuous, reversing time, variable RUN/STOP time, and acceleration/deceleration rates
- Unique ratcheting clamping system will securely hold containers
- Ideal for repetitive protocols and use with open top containers
- Optional accessories available for tubes and microplates

SPECIFICATIONS	
Capacity	Six 250ml flasks (no additional holder necessary) Tube Racks holding up to 20 tubes Two 2-MicroPlate Inserts holding up to 4 microplates
Speed	500 - 2000 RPM (1950 for 50Hz models)
Orbit	2.5mm dia.
Timer - Hands Free	1 min to 99 hrs or continuous
Pulse - ON/OFF	0.1 seconds - 99 minutes
Platform Dimensions	240 x 280mm (9.5 x 11in)
Dimensions (D x W x H)	310 x 270 x 195mm (12.2 x 10.6 x 7.7in)
Weight	10.4 Kg (23 lb)
Markings / Warranty	CE / 2-Years
CATALOG NUMBERS	
120V - Std. Plug	SI-MX200
230V - No Plug	SI-MX201
230V - EU Plug	SI-MX202
230V - UK Plug	SI-MX203
230V - CH Plug	SI-MX204
240V - AU Plug	SI-MX206
100V - Std. Plug	SI-MX205
ACCESSORIES ORDERING INFORMATION	
Max Tube Rack (for 10 tubes)	SI-MX010
Max Tube Rack (set of 2 for 20 tubes)	SI-MX020
Max Tube Rack Short (for 10 tubes)	SI-MX010S
Max Tube Rack Short (set of 2 for 20 tubes)	SI-MX020S
MicroPlate Foam Insert for 2 Plates	SI-MX030
MicroPlate Foam Insert for 2 Plates (set of 2)	SI-MX040
Ratcheting Clamp, Vortex-Genie Max	SI-MX050

ASK US ABOUT...

NEW!

WIZARD MINI-FUGE

Compact and Space-Saving Personal Centrifuge!



Weighing and Measurement Products





- Small vortexing orbit and controlled speed for mixing, even in 384-well plates
- Programmable control and display of speed, time, and “RUN/STOP” time, for reproducibility and accuracy
- Analog models available for high speed mixing only
- Multi-MicroPlate Genie accepts up to 4 microplates, 8 with optional accessory tray

SPECIFICATIONS				
Microplate Mixer Model	MicroPlate Genie		Multi-MicroPlate Genie	
Speed (Digital)	500-3000 RPM (2850 for 50Hz models)		500-3000 RPM (2850 for 50Hz models)	
Speed (Analog)	750-3200 RPM (2700 for 50Hz models)		750-3200 RPM (2700 for 50Hz models)	
Orbit	1.0mm dia.		1.0mm dia.	
Timer (Digital)	1-99 minutes or continuous		1-99 minutes or continuous	
Timer (Analog)	1-60 minutes or continuous		1-60 minutes or continuous	
Pulse - ON/OFF (digital only)	0.1 seconds - 99 minutes		0.1 seconds - 99 minutes	
Maximum Capacity	1 microplate, any type with standard SBS footprint		4 microplates (8 microplates with optional tray)	
Dimensions (D x W x H)	165 x 165 x 150mm (6.5 x 6.5 x 5.75in)		335 x 240 x 165mm (13.2 x 9.4 x 6.5in)	
Weight	2.75 Kg (6.1 lb)		3.75 Kg (8.2 lb)	
Markings / Warranty	CE / 2-Years		CE / 2-Years	
CATALOG NUMBERS				
	Digital	Analog	Digital	Analog
120V - Std. Plug	SI-0400A	SI-0400	SI-4000A	SI-4000
230V - No Plug	SI-0401A	SI-0401	SI-4001A	SI-4001
230V - EU Plug	SI-0402A	SI-0402	SI-4002A	SI-4002
230V - UK Plug	SI-0403A	SI-0403	SI-4003A	SI-4003
240V - AU Plug	SI-0406A	SI-0406	SI-4006A	SI-4006
100V - Std. Plug	SI-0405A	SI-0405	SI-4005A	SI-4005
ACCESSORIES ORDERING INFORMATION				
Multi-MicroPlate Accessory Tray	N/A		SI-4010	
Kit for PCR Plates	OK-0400-901		OK-0400-901	

MINI-100 ORBITAL-GENIE™

Low Speed Orbital Shaker



Add stacking trays

Double or triple the capacity of the Mini-100

- Ideal for orbital shaking applications such as Western Blots
- Non-Slip Platform design with spill proof edges
- Add Stacking Trays with no tools required
- Variable shaking speed up to 100 RPM
- May be used in cold rooms and incubators (Not for CO² incubators)

SPECIFICATIONS	
Speed / Orbit	20-100 RPM / 19mm dia.
Platform Dimensions	290 x 290mm (11.4 x 11.4in)
Dimensions (base)	350 x 350mm (14 x 14in)
Maximum Load	165 x 122 x 165mm (6.5 x 4.8 x 6.5in)
Weight	3 Kg (6.6 lb)
Markings / Warranty	CE / 2-Years
CATALOG NUMBERS	
120V - Std. Plug	SI-M100
230V - No Plug	SI-M101
230V - EU Plug	SI-M102
230V - UK Plug	SI-M103
230V - CH Plug	SI-M104
240V - AU Plug	SI-M106
100V - Std. Plug	SI-M105
ACCESSORIES ORDERING INFORMATION	
Stacking Tray	SI-M150

MINI-300 ORBITAL-GENIE™

High Speed Orbital Shakers



Ratcheting Clamps Platform



Flask Clamps Platform



Adhering Mat Platform

- Choice of 3 compact models
- Powerful orbital shaking up to 300 RPM
- Unique adhering mat model perfect for open containers
- May be used in cold rooms and incubators (Not for CO2 incubators)

SPECIFICATIONS

Orbital Shaker Model	Mini-300 Orbital-Genie Ratcheting Clamps	Mini-300 Orbital-Genie Flask Clamps	Mini-300 Orbital-Genie Adhering Mat
Speed / Orbit	35-300 RPM / 19mm dia.		
Platform Dimensions	305 x 305mm (12 x 12in)		
Dimensions (base)	350 x 350mm (14 x 14in)		
Maximum Load	3 Kg (6.6 lb)		
Weight	10.25 Kg (22.6 lb)		
Markings / Warranty	CE / 2 Years		

CATALOG NUMBERS

Voltage / Plug	SI-M1500	SI-M1600	SI-M1700
120V - Std. Plug	SI-M1500	SI-M1600	SI-M1700
230V - No Plug	SI-M1501	SI-M1601	SI-M1701
230V - EU Plug	SI-M1502	SI-M1602	SI-M1702
230V - UK Plug	SI-M1503	SI-M1603	SI-M1703
230V - CH Plug	SI-M1504	SI-M1604	SI-M1704
240V - AU Plug	SI-M1506	SI-M1606	SI-M1706
100V - Std. Plug	SI-M1505	SI-M1605	SI-M1705

ACCESSORIES ORDERING INFORMATION

Catalog No.	Description	Catalog No.	Description
SI-M010	Tube Rack (for 12 tubes)	SI-1610	100 ml Flask Clamp
SI-M020	Tube Rack (set of 2 for 24 tubes)	SI-1611	125/150 ml Flask Clamp
SI-M010S	Tube Rack Short (for 12 tubes)	SI-1612	250 ml Flask Clamp
SI-M020S	Tube Rack Short (set of 2 for 24 tubes)	SI-1613	500 ml Flask Clamp
SI-M1510	Universal Ratcheting Clamp for Mini-300 Orbital-Genie	SI-1614	1 L Flask Clamp
		SI-1615	2 L Flask Clamp
SI-M1617	Adhering Mat, Blue, 300mm x 300mm (11.8in x 11.8in)	SI-1616	Double Sided Adhesive Tape, 60in x 1in (1.5m x 25.5mm)



Ratcheting Clamps Platform



Flask Clamps Platform



Adhering Mat Platform

- Heavy duty, large footprint
- Programmable - time, reversing time, acceleration/deceleration rates and variable RUN/STOP time
- Delivers exceptional speed control and accuracy under heavy load
- Variable shaking speed with orbit REVERSING
- May be used in cold rooms and incubators, size permitting (Not for CO² incubators)

SPECIFICATIONS			
Orbital Shaker Model	Orbital-Genie Ratcheting Clamps	Orbital-Genie Standard Flask Clamps	Orbital-Genie Adhering Mat
Speed	10-300 RPM including Stir Reverse		
Orbit	35mm dia.		
Timer	1 min - 99 hours w/Alarm or Continuous		
Interval - ON/OFF	1 min - 99 hours		
Platform Dimensions	460 x 460mm (18 x 18in)		
Dimensions (base)	590 x 500mm (23 x 20in)		
Maximum Load	12 Kg (26 lbs)		
Selectable Ramp Rates	10 - 100 RPM/sec		
Weight	21 Kg (46 lb)		
Markings / Warranty	CE / 2 Years		

Orbital-Genie Models



1. Orbital-Genie With Universal Ratcheting Clamps provides the flexibility for using a mix of different size and shape vessels on a single platform. Unit is supplied with two ratcheting and one non-ratcheting cushioned clamps. Extra ratcheting clamps available.



2. Orbital-Genie For Standard Flask Clamps is equipped with a platform for accepting various size flasks or beakers. Clamps sold separately.



3. Orbital-Genie With Adhering Mat provides a flat platform perfect for use with open containers. Patented material is naturally adhering. Rinse clean to renew adhering properties.

CATALOG NUMBERS

Orbital Shaker Model	Orbital-Genie Ratcheting Clamps	Orbital-Genie Standard Flask Clamps	Orbital-Genie Adhering Mat
120V - Std. Plug	SI-1500	SI-1600	SI-1700
230V - No Plug	SI-1501	SI-1601	SI-1701
230V - EU Plug	SI-1502	SI-1602	SI-1702
230V - UK Plug	SI-1503	SI-1603	SI-1703
230V - CH Plug	SI-1504	SI-1604	SI-1704
240V - AU Plug	SI-1506	SI-1606	SI-1706
100V - Std. Plug	SI-1505	SI-1605	SI-1705

ACCESSORIES ORDERING INFORMATION

Catalog No.	Description	Platform Capacity
SI-1610	100mL Flask Clamp	36
SI-1611	125/150mL Flask Clamp	36
SI-1612	250mL Flask Clamp	25
SI-1613	500mL Flask Clamp	16
SI-1614	1L Flask Clamp	9
SI-1615	2L Flask Clamp	5
SI-1616	Double Sided Adhesive Tape Roll, 1.5m x 25.4mm (60in x 1in)	N/A
SI-1617	Adhering Mat, Blue, 460mm x 460mm (18in x 18in)	N/A
SI-1510	Universal Ratcheting Clamp	N/A
SI-1618	Non-Slip Mat for Low Speed	N/A



- Temperature controlled orbital shaking up to 100 RPM
- Proprietary Dome Design
 - » Provides uniform temperature control
 - » 360 degree view with unique multiple access
- Increased Capacity with optional stacking tray - no tools required
- Interchangeable Platforms (see accessories)

SPECIFICATIONS	
Speed / Orbit	20-100 RPM / 19mm dia.
Temperature	28° to 75° C
Platform Dimensions	305 x 305mm (12 x 12in)
Dimensions (base)	450 x 480mm (17.6 x 19in)
Maximum Load	3 Kg (6.6 lb)
Weight	9 Kg (20 lb)
Chamber Height / Volume	305mm (12in) / 40 L (2400 cubic inches)
Markings / Warranty	CE / 2 Years
CATALOG NUMBERS	
120V - Std. Plug	SI-G100
230V - No Plug	SI-G101
230V - EU Plug	SI-G102
230V - UK Plug	SI-G103
230V - CH Plug	SI-G104
240V - AU Plug	SI-G106
100V - Std. Plug	SI-G105

ACCESSORIES ORDERING INFORMATION	
Stacking Tray	SI-M150
Double Sided Adhesive Tape, 60in x 1in (1.5mm x 25.5mm)	SI-1616
Adhering Mat, Blue, 300mm x 300mm (11.8in x 11.8in)	SI-M1617
GTS Non-Slip Platform	SI-G150
GTS Ratcheting Clamp Platform	SI-G1550
GTS Flask Clamp Platform	SI-G1650
GTS Adhering Mat Platform	SI-G1750



- Temperature controlled orbital shaking up to 300 RPM
- Proprietary Dome Design
 - » Provides uniform temperature control
 - » 360 degree view with unique multiple access
- Interchangeable Platforms (see accessories)

SPECIFICATIONS			
Speed / Orbit	35-300 RPM / 19mm dia.		
Temperature	28° to 75° C		
Platform Dimensions	305 x 305mm (12 x 12in)		
Dimensions (base)	450 x 480mm (17.6 x 19in)		
Maximum Load	3 Kg (6.6 lb)		
Weight	9 Kg (20 lb)		
Chamber Height / Volume	305mm (12in) / 40 L (2400 cubic inches)		
Markings / Warranty	CE / 2 Years		
CATALOG NUMBERS			
Temp-Shaker 300 model	GTS 300 Ratcheting Clamps	GTS 300 Flask Clamps	GTS300 Adhering Mat
120V - Std. Plug	SI-G1500	SI-G1600	SI-G1700
230V - No Plug	SI-G1501	SI-G1601	SI-G1701
230V - EU Plug	SI-G1502	SI-G1602	SI-G1702
230V - UK Plug	SI-G1503	SI-G1603	SI-G1703
230V - CH Plug	SI-G1504	SI-G1604	SI-G1704
240V - AU Plug	SI-G1506	SI-G1606	SI-G1706
100V - Std. Plug	SI-G1505	SI-G1605	SI-G1705
ACCESSORIES ORDERING INFORMATION			
Catalog No.	Description	Catalog No.	Description
SI-1616	Double Sided Adhesive Tape, 60in x 1in (1.5mm x 25.5mm)	SI-M1617	Adhering Mat, Blue, 300mm x 300mm (11.8in x 11.8in)
SI-G150	GTS Non-Slip Platform	SI-M010	Tube Rack (for 12 tubes)
SI-G1550	GTS Ratcheting Clamp Platform	SI-M020	Tube Rack (set of 2 for 24 tubes)
SI-G1650	GTS Flask Clamp Platform	SI-M010S	Tube Rack Short (for 12 tubes)
SI-G1750	GTS Adhering Mat Platform	SI-M020S	Tube Rack Short (set of 2 for 24 tubes)



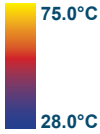
Accessories Supplied with Unit

- Chiller, incubator, rotator, rocker and stirrer in one compact unit
- Magnetic platform and various accessories securely hold almost any sample
- Optional 3-D or 2-D orbital shaker accessories transforms the unit into a temperature-controlled orbital shaker
- Proprietary Enviro App provides easy access to data download and auto run programming

SPECIFICATIONS	
Supplied	Magnetic Platform, 1 Clip Plate each for 10-13mm, 15-17mm, and 28-30mm Tubes, 4 Bag Mounting Strips, Non-Skid Tray, and Stackable Shelf
Rotating	1-35 RPM
Rocking / Rocking Angle	2-70 cycles per minute / ±10 degrees from horizontal
Stirring	1-2000 RPM including stir reverse
Platform Capacity	4.5 Kg (10 lb)
Temperature Range	4-75°C (39-167°F)
Accuracy / Uniformity	±0.2°C / ±0.5°C
Resolution / Stability	0.1°C / ±0.1°C
Chamber Dimensions (D x W x H)	254 x 362 x 260mm (10 x 14.25 x 10.25in)
Overall Dimensions (D x W x H)	495 x 622 x 368mm (19.5 x 24.5 x 14.5in) Depth with Rocker Tray - 305mm (12in)
Chamber Volume	24 L (0.86 ft³)
Weight	36 Kg (80 lb)
Markings / Warranty	CE / 2-years
CATALOG NUMBERS	
120V - Std. Plug	SI-1200
230V - No Plug	SI-1201
230V - EU Plug	SI-1202
230V - UK Plug	SI-1203
230V - CH Plug	SI-1204
240V - AU Plug	SI-1206
100V - Std. Plug	SI-1205

INCUBATOR- GENIE™

Benchtop Shaking/Rotating Incubator



Accessories Supplied with Unit

- Incubate, Rotate, Rock, and Shake all in ONE compact unit
- Magnetic stainless steel platform may be easily set to rock or rotate almost any container
- Precise temperature control and uniformity
- Optional 3-D or 2-D shaker accessories transforms the unit into a temperature-controlled orbital shaker

SPECIFICATIONS	
Supplied	Magnetic Platform, 1 Clip Plate each for 10-13mm, 15-17mm, and 28-30mm Tubes, 4 Bag Mounting Strips, Non-Skid Tray, and Stackable Shelf
Rotating	3-35 RPM
Rocking / Rocking Angle	6-70 cycles per minute / ±10 degrees from horizontal
Platform Capacity	4.5 Kg (10 lb)
Temperature Range	28-75°C (82-167°F)
Accuracy / Uniformity	±0.2°C / ±0.5°C
Resolution / Stability	0.1°C / ±0.1°C
Chamber Dimensions (D x W x H)	254 x 362 x 260mm (10 x 14.25 x 10.25in)
Overall Dimensions (D x W x H)	400 x 560 x 368mm (15.75 x 22 x 14.5in) Depth with Rocker Tray - 305mm (12in)
Chamber Volume	24 L (0.86 ft³)
Weight	19.5 Kg (43 lb)
Markings / Warranty	CE / 2-Years
CATALOG NUMBERS	
120V - Std. Plug	SI-1400
230V - No Plug	SI-1401
230V - EU Plug	SI-1402
230V - UK Plug	SI-1403
230V - CH Plug	SI-1404
240V - AU Plug	SI-1406
100V - Std. Plug	SI-1405

See Pages 21 and 22 for accessories

U.S. Pat. 5,918,979



- Patented magnetic platform design combines rotating and rocking in one compact unit
- Optional 3-D or 2-D orbital accessories transforms the unit into an orbital shaker
- A variety of accessories are available to provide maximum application versatility - for use on magnetic platform
- May be used in cold rooms and incubators (Not for CO² incubators)

SPECIFICATIONS	
Supplied	Magnetic Platform, 1 Clip Plate each for 10-13mm, 15-17mm, and 28-30mm Tubes, 4 Bag Mounting Strips, and Non-Skid Tray
Rotating	5-35 RPM
Rocking	10-70 cycles per minute
Rocking Angle	±10 degrees from horizontal
Platform Capacity	4.5 Kg (10 lb)
Dimensions (D x W x H)	252 x 508 x 267mm (9.9 x 20 x 10.5in) Depth with Rocker Tray - 305mm (12in)
Weight	11.8 Kg (26 lb)
Environmental	Installation Category 2, 0-38°C (32-100°F) 95% max. relative humidity
Markings / Warranty	CE / 2-Years
CATALOG NUMBERS	
120V - Std. Plug	SI-1100
230V - No Plug	SI-1101
230V - EU Plug	SI-1102
230V - UK Plug	SI-1103
230V - CH Plug	SI-1104
240V - AU Plug	SI-1106
100V - Std. Plug	SI-1105

See Pages 21 and 22 for accessories

U.S. Pat. 5,918,979



Standard Platform



Magnetic Platform

- Holds a wide variety of tubes, flasks, microplates, bags, and odd-shaped vessels at any angle
- Available in two INTERCHANGEABLE platform configurations
- Standard platform turns 90 degrees for different mixing motions
- MAGNETIC platform features unique clip plate system
- May be used in cold rooms and incubators (Not for CO² incubators)

SPECIFICATIONS		
Supplied	Standard Platform with Retaining Bands or Magnetic Platform	
Speed	5-35 RPM	
Platform Dimensions	260 x 260mm (10.25 x 10.25 in)	
Standard Platform	290 x 315mm (11.5 x 12.5 in)	
Magnetic Platform		
Overall Dimensions (W x D x H)	400 x 175 x 400mm (15.8 x 7.0 x 15.8in)	
	Depth with Platform Horizontal - 290mm (11.5in)	
Weight	5.2 Kg (11.5 lb)	
Environmental	Installation Category 2, 0-38°C (32-100°F), 95% max. relative humidity	
Markings / Warranty	CE / 2-Years	
CATALOG NUMBERS		
Rotator Model	Standard Platform	Magnetic Platform
120V - Std. Plug	SI-2100	SI-2200
230V - No Plug	SI-2101	SI-2201
230V - EU Plug	SI-2102	SI-2202
230V - UK Plug	SI-2103	SI-2203
230V - CH Plug	SI-2104	SI-2204
240V - AU Plug	SI-2106	SI-2206
100V - Std. Plug	SI-2105	SI-2205

See Pages 21 and 22 for accessories

Accessories for Rotators and Incubators



SI-1123
1 Clip Plate holds twelve
10-13mm tubes*



SI-1124
1 Clip Plate holds six
15-17mm tubes*



SI-1125
1 Clip Plate holds three
28-30mm tubes*



SI-1120
6 Clip Plates holds twelve
10-13mm tubes*



SI-1121
6 Clip Plates holds six
15-17mm tubes*



SI-1122
6 Clip Plates holds three
28-30mm tubes*



SI-1126
Bag Mounting Strips (pack of 16)*



SI-1127
Bag Mounting Expansion Kit



SI-1130
2 Clip Plates for
Hybridization Tubes*



SI-1134
2 Universal Clip Plates*



SI-1136
1 Clip Plate for 100ml
Volumetric Flasks*



SI-1170
Stackable Tray for
Roto-Shake Genie Only

*If purchasing for Rotator Genie – requires Magnetic Platform SI-2210, which is supplied with all SI-22XX Models

Accessories for Rotators and Incubators



**SI-1135
Magnetic 100 Microtube Box***



**SI-1140
Magnetic 50 Microtube Box***



**SI-1139
Magnetic Strip Blot Box***



**SI-1150 - Roto-Shake Genie
SI-1250 - Enviro-Genie /
Incubator-Genie
3-D Orbital Shaker Attachment**



**SI-1175 - Roto-Shake Genie
SI-1275 - Enviro-Genie /
Incubator-Genie
Horizontal Orbital Shaker**



**0A-1100-070 - Roto-Shake Genie
0A-1200-001 Enviro-Genie /
Incubator-Genie Non-Skid Tray**



**SI-1131
Stackable Shelf for Enviro-Genie
and Incubator-Genie Only**



**SI-1132 6 ft. Serial Cable for
Enviro-Genie Only**



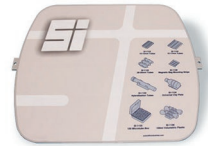
**SI-1260
Wireless Bluetooth Module
For Enviro-Genie Only**



**SI-1137
Dual Port Mixing Tube*
(SI-1130 required for use)**



**SI-2110
Standard Platform with Bands
for Rotator Genie Only**



**SI-2210
Magnetic Platform for
Rotator Genie Only**

*If purchasing for Rotator Genie – requires Magnetic Platform SI-2210, which is supplied with all SI-22XX Models



- Bags rotate “end-over-end” at fixed speed of 3 RPM
- Specialized basket design prevents bag movement
- Can effectively mix contents of almost any sealed bag type
- Gentle yet thorough mixing eliminates the risk of sample damage
- Maintains platelets in even suspension throughout the bag

SPECIFICATIONS	
Capacity	Up to (40) 300ml transfer packs or random bags
Speed	Fixed rotation, 3 RPM \pm 0.5 RPM
Dimensions (D x W x H)	252 x 508 x 267mm (9.9 x 20.0 x 10.5in)
Weight	7.7 Kg (17.0 lb) with basket
Markings / Warranty	CE / 2-Years
CATALOG NUMBERS	
120V - Std. Plug	SI-1000
230V - No Plug	SI-1001
230V - EU Plug	SI-1002
230V - UK Plug	SI-1003
230V - CH Plug	SI-1004
240V - AU Plug	SI-1006
100V - Std. Plug	SI-1005



- High and low speed range include reverse and interval stirring
- Three power levels for various sample viscosities
- Manual mode provides stir, stir reverse, and time functions
- Profiles mode allows users to quickly program speed, ramp rate, stir direction, time (including pause), and power level. Up to 4 stirring programs can be saved

Not recommended for use in CO² incubators

SPECIFICATIONS		
Magnetic Stirrer Model	MagStir Genie	MultiMagStir Genie
Speed	10-1800 RPM	10-1200 RPM
Timer	1 second - 99 hours	1 second - 99 hours
Programmable	Yes	Yes
Power Levels	Low, Medium, High	Low, Medium, High
Selectable Ramp Rates	5 - 300 rpm/sec	5 - 300 rpm/sec
Memory	Up to 4 user-defined profiles	Up to 4 user-defined profiles
Maximum Stirring Positions	1	4
Maximum Stirring Capacity	2 L	1 L each position
Dimensions (D x W x H)	200 x 160 x 55mm (7.9 x 6.3 x 2.2in)	375 x 325 x 48mm (14.8 x 12.8 x 1.9in)
Weight	1.0 Kg (2.2 lb)	3.2 Kg (7.0 lb)
Markings / Warranty	ETL, CE / 2-Years	ETL, CE / 2-Years
CATALOG NUMBERS		
120V/100V - Std. Plug	SI-0300	SI-3000
230V - No Plug	SI-0301	SI-3001
230V - EU Plug	SI-0302	SI-3002
230V - UK Plug	SI-0303	SI-3003
240V - AU Plug	SI-0306	SI-3006



- Four position stirring
- Designed with powerful “rare earth” magnets
- ABS/Polycarbonate housing
- Ramping feature slowly increases speed to avoid splashing and improve spin bar control
- May be used in cold rooms and incubators (Not for CO² incubators)

SPECIFICATIONS	
Magnetic Stirrer Model	QuadMag Genie Digital
Speed	250-1300 RPM (controllable)
Timer	1-99 min or continuous
Maximum Stirring Positions	4
Maximum Stirring Capacity	2 Liters Each Position (Simultaneous)
Top Surface Dimensions (D x W)	305 x 305mm (12 x 12in)
Overall Dimensions (D x W x H)	310 x 305 x 130mm (12.25 x 12 x 5.1in)
Weight	3 Kg (6.6 lb)
Markings / Warranty	CE / 2-Years
CATALOG NUMBERS	
120V - Std. Plug	SI-5236
230V - No Plug	SI-5246
230V - EU Plug	SI-5256
230V - UK Plug	SI-5266
230V - CH Plug	SI-5276
240V - AU Plug	SI-5296
100V - Std. Plug	SI-5286



HIGH SPEED



LOW SPEED

- Single position high capacity stirring (up to 38 Liters)
- Designed with powerful “rare earth” magnets
- ABS/Polycarbonate housing
- Choice of THREE different models - Digital or Analog for high speed applications, and Low Range Digital for low speed applications
- May be used in cold rooms and incubators (Not for CO² incubators)

SPECIFICATIONS			
Magnetic Stirrer Model	MegaMag Genie Digital	MegaMag Genie Analog	MegaMag Genie LR Digital
Speed	250-1300 RPM	250-1300 RPM	50-300 RPM (285 for 50Hz models)
Timer	1-99 min or continuous	N/A	1-99 min or continuous
Maximum Stirring Positions	1	1	1
Maximum Stirring Capacity	38 L	38 L	38 L
Top Surface Dimensions (D x W)	305 x 305mm (12 x 12in)	305 x 305mm (12 x 12in)	305 x 305mm (12 x 12in)
Overall Dimensions (D x W x H)	310 x 305 x 130mm (12.25 x 12 x 5.1in)	310 x 305 x 130mm (12.25 x 12 x 5.1in)	310 x 305 x 130mm (12.25 x 12 x 5.1in)
Weight	3 Kg (6.6 lb)	3 Kg (6.6 lb)	3 Kg (6.6 lb)
Markings / Warranty	CE / 2 Years	CE / 2 Years	CE / 2 Years
CATALOG NUMBERS			
120V - Std. Plug	SI-3236	SI-2236	SI-3236L
230V - No Plug	SI-3246	SI-2246	SI-3246L
230V - EU Plug	SI-3256	SI-2256	SI-3256L
230V - UK Plug	SI-3266	SI-2266	SI-3266L
230V - CH Plug	SI-3276	SI-2276	SI-3276L
240V - AU Plug	SI-3296	SI-2296	SI-3296L
100V - Std. Plug	SI-3286	SI-2286	SI-3286L

GENIE™
Lab Equipment



WIZARD™
Lab Equipment



Weighing and
Measurement
Equipment

SOLUTIONS FOR ALL YOUR SAMPLE PREPARATION NEEDS

Visit our website
www.scientificindustries.com



80 Ovidia Drive, Suite 102, Bohemia, NY 11716, U.S.A.
(631) 587-4700 FAX (631) 587-5896 Toll Free 888-839-6208
Customer Service: custserv@scientificindustries.com



All GENIE Products are Proudly
Manufactured in the United States