

## TSVF-8 SMARTBOX® Tandem Rack

## SMARTBOX®

The latest addition to our SMARTBOX family. Operators now have individual control of each chamber allowing simultaneous selection of different species. The innovative 7" touch screen allows administrators to program unlimited species types and users. The administrators now have the power to add secondary CO<sub>2</sub> charges and dwell periods for any species that may require longer exposure. Individual users can be assigned independent passwords, and the administrator can grant access to specific species type. This feature is appealing when the entire facility has access to the SMARTBOX system. The new controller also includes Wi-Fi for simple remote access. Optional Tank Talker wireless transducer for monitoring tank pressure available.

The clear polycarbonate doors provide visibility while the front-loading, swing-down design offers easy cage access. Airtight, gasket-sealed doors prevent gas leakage during operation. The manifold design ensures even gas distribution. The system accommodates the full range of rodent cages from all manufacturers. The included cart provides mobility for easy chamber cleaning.

*TSVF-8 includes: SMARTBOX® Side Control Box, two M1 Chambers, Exhaust Blower, 8' of 4" Exhaust Tubing, two 4" Hose Clamps*

### Compliant with AVMA Guidelines

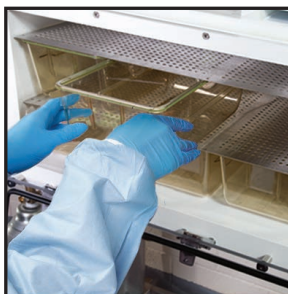
- Accommodates up to 160 shoebox mouse cages or 32 standard rat cages
- Independent level operation increases efficiency
- Interactive control panel facilitates easy training and operation
- Fully automated preset times and flow rates for each species and chamber quantity
- Automation virtually eliminates operator error and conserves CO<sub>2</sub> consumption
- After starting system, technician is free to do other work
- Programs can be customized based on facility requirements
- Password-protected presets ensure only authorized personnel can make program changes
- Electronically monitored safety system prevents operation when chamber door is not properly closed
- Doors automatically lock during operation and unlock after evacuation
- Gas is fully evacuated if system shuts down before cycle completion
- Warning light indicates loss of CO<sub>2</sub> supply



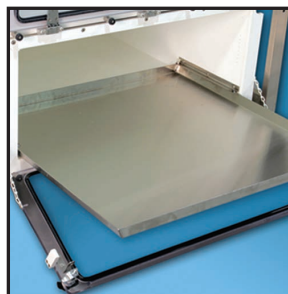
### Accessories



EA-6500



EA-1315



EA-5500

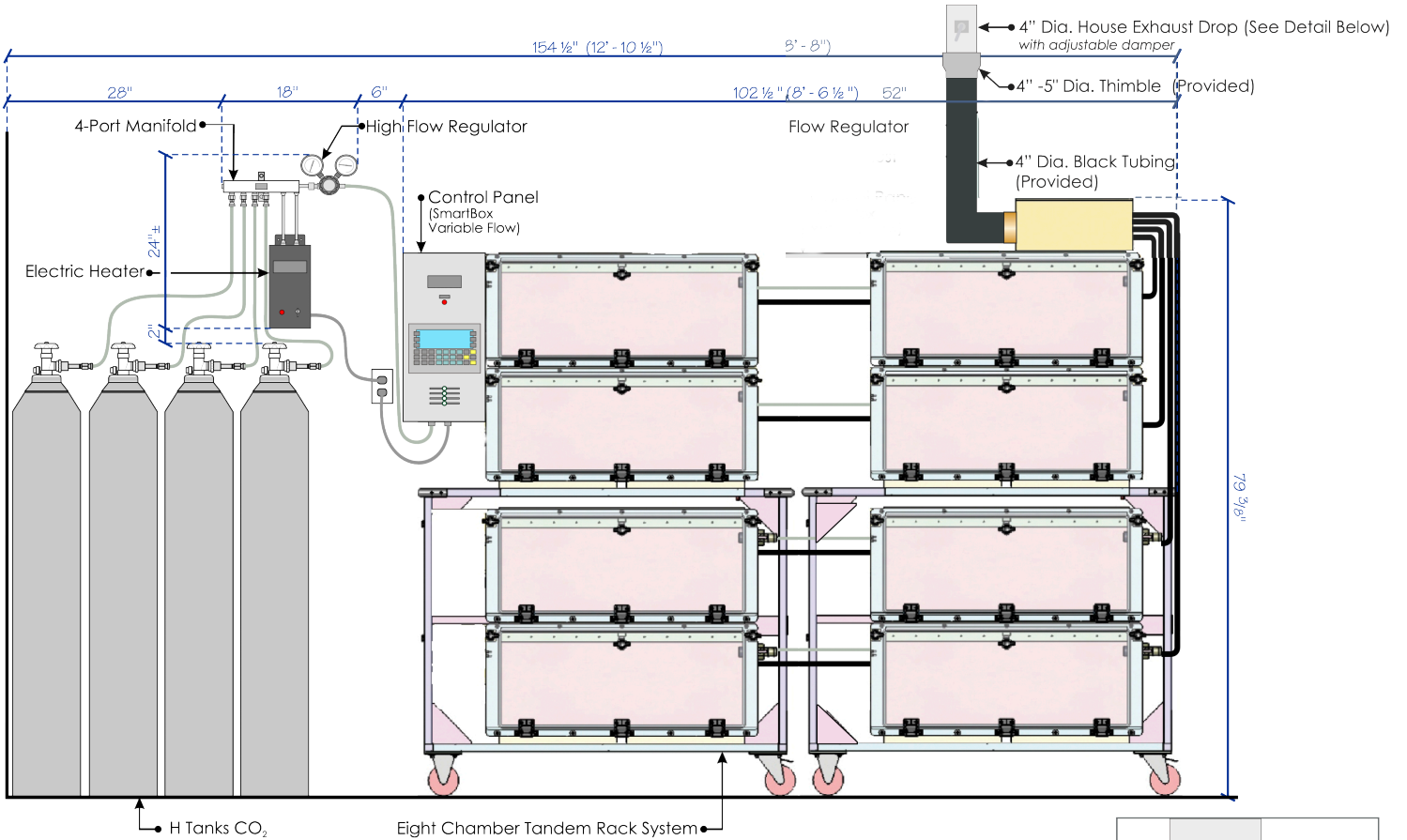


EA-255



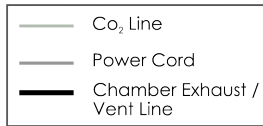
EA-300

## SMARTBOX®



### SMARTBOX Auto CO<sub>2</sub> System / TSVF-8

SCALE: 3/4" = 1'-0"



REQUIREMENTS	
Electric	120V 15 AMP
4" House Exhaust	60 CFM
CO <sub>2</sub> Supply	35 PSI @ 250LPM

### INSIDE CHAMBER DIMENSIONS

32.0" W X 30.5" D X 12.5" H

